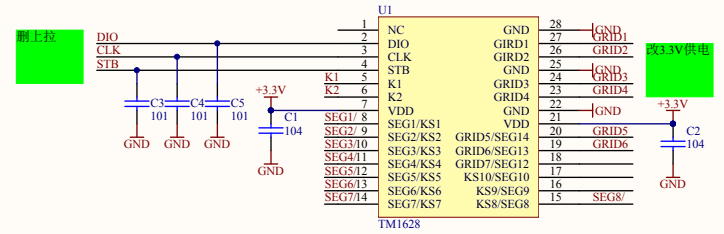
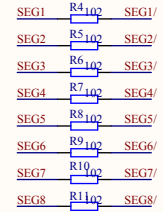
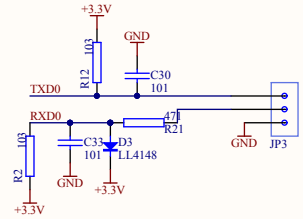
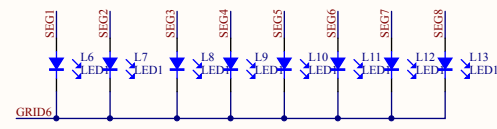


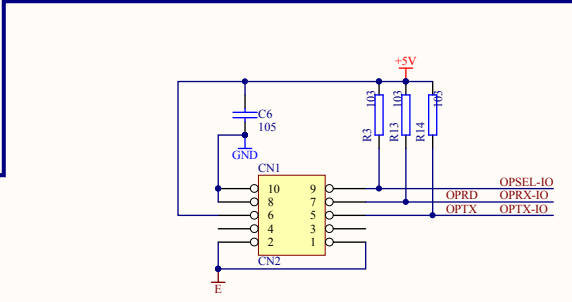
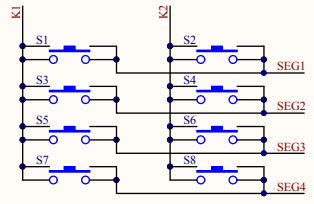
改数码管



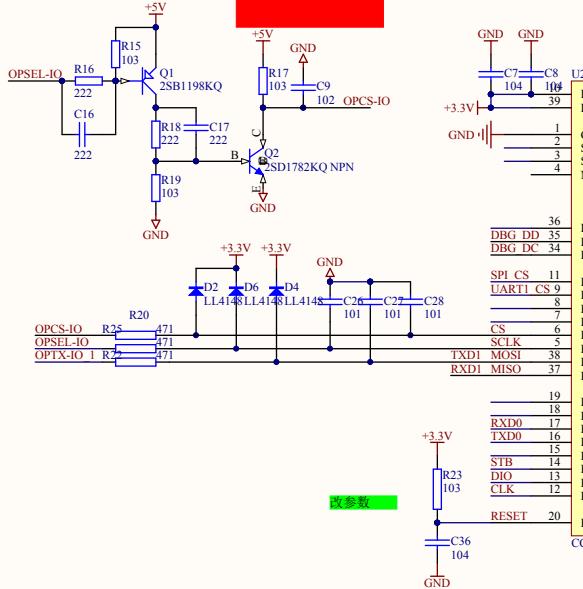
如果3.3V可以驱动现在用的红数码管，建议TM1628使用3.3V供电。  
 TM1628逻辑电源电压 VDD -0.5 ~ +7.0 V  
 高电平输入电压 VIH 0.7 VDD - VDD V  
 低电平输入电压 VIL 0 - 0.3 VDD V



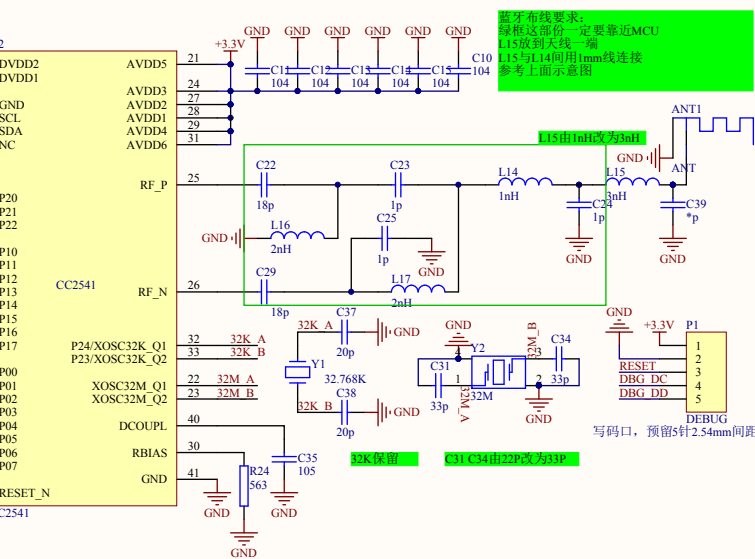
PCB注意：  
 在硬件上将需要同时按下的键设置在不同的K线上；  
 使用同一个KS不同的K键作为复合键



这两个参数都定为100的电阻和102的电容，协调

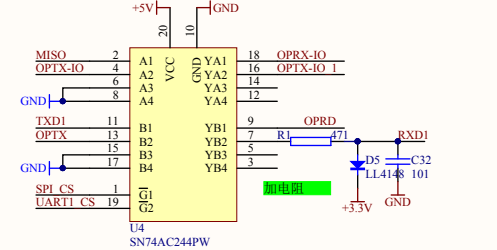
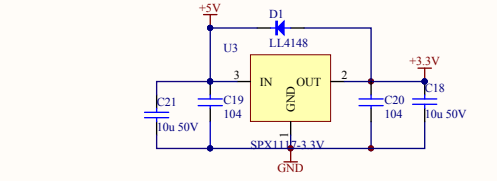


改参数



蓝牙布线要求：  
 阻抗这份一定要靠近MCU  
 L15放到天线一端  
 L15与L14间用1mm线连接  
 参考上面示意图

蓝牙板载天线



Title		
Size	Number	Revision
A3		
Date:	2018/12/3	Sheet of
File:	C:\Users\...OP-03BLE-00A-05.Sch	1 Drawn By: