

SCHEMATIC CONTENTS:

- 1 COVER SHEET
- 2 Clock Inputs
- 3 645X DDR2 Interface
- 4 DDR2 Memories
- 5 645X EMIF A
- 6 BOOT Options
- 7 CPLD
- 8 645X MII INTERFACE
- 9 645X HOST PORT INTERFACE
- 10 645X SRIO INTERFACE
- 11 645X POWER PINS I
- 12 645X POWER PINS II
- 13 645X EMULATION
- 14 645X EMULATION INTERFACE
- 15 HIERARCHICAL BLOCKS
- 16 645X DECOUPLING CAPS I
- 17 645X DECOUPLING CAPS II

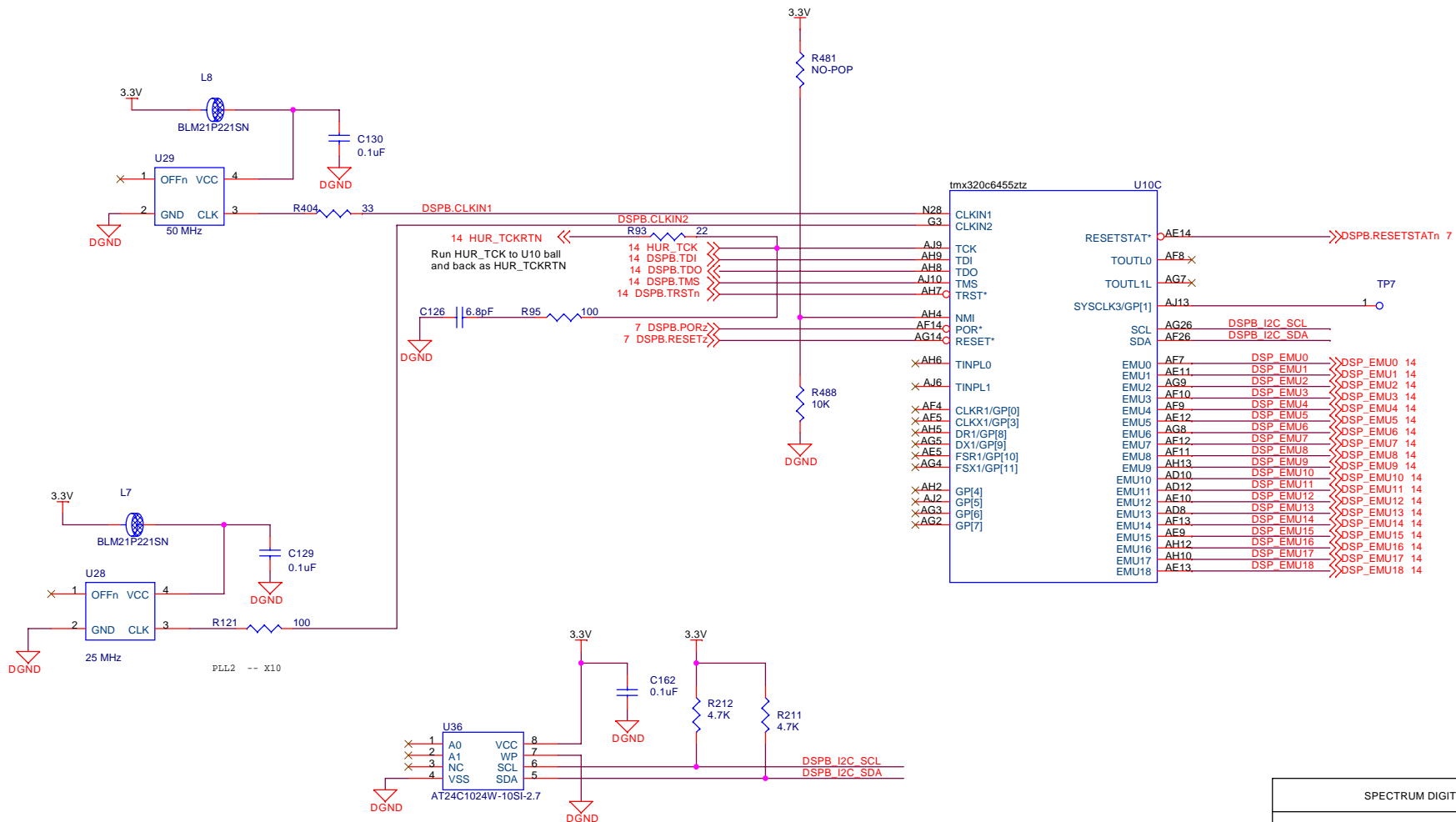
- 18 POWER SUPPLIES I
- 19 POWER SUPPLIES II

- 20 ETHERNET PHY
- 21 ETHERNET PHY
- 22 ETHERNET PHY

REVISION STATUS OF SHEETS												
REV												
SH	21	22										
REV	A	A	A	A	A	A	A	A	A	A		
SH	11	12	13	14	15	16	17	18	19	20		
REV	A	A	A	A	A	A	A	A	A	A	NEXT ASSY	USED ON
SH	1	2	3	4	5	6	7	8	9	10	APPLICATION	

DWN		DATE
R.R.P.		AUG 01,2005
CHK		DATE
R.R.P.		AUG 01,2005
ENGR		DATE
J.T.C.		AUG 01,2005
ENGR-MGR		DATE
R.R.P.		AUG 01,2005
QA		DATE
C.M.D.		AUG 01,2005
MFG		DATE
C.M.D.		AUG 01,2005
ELSE		DATE
T.M.K.		AUG 01,2005

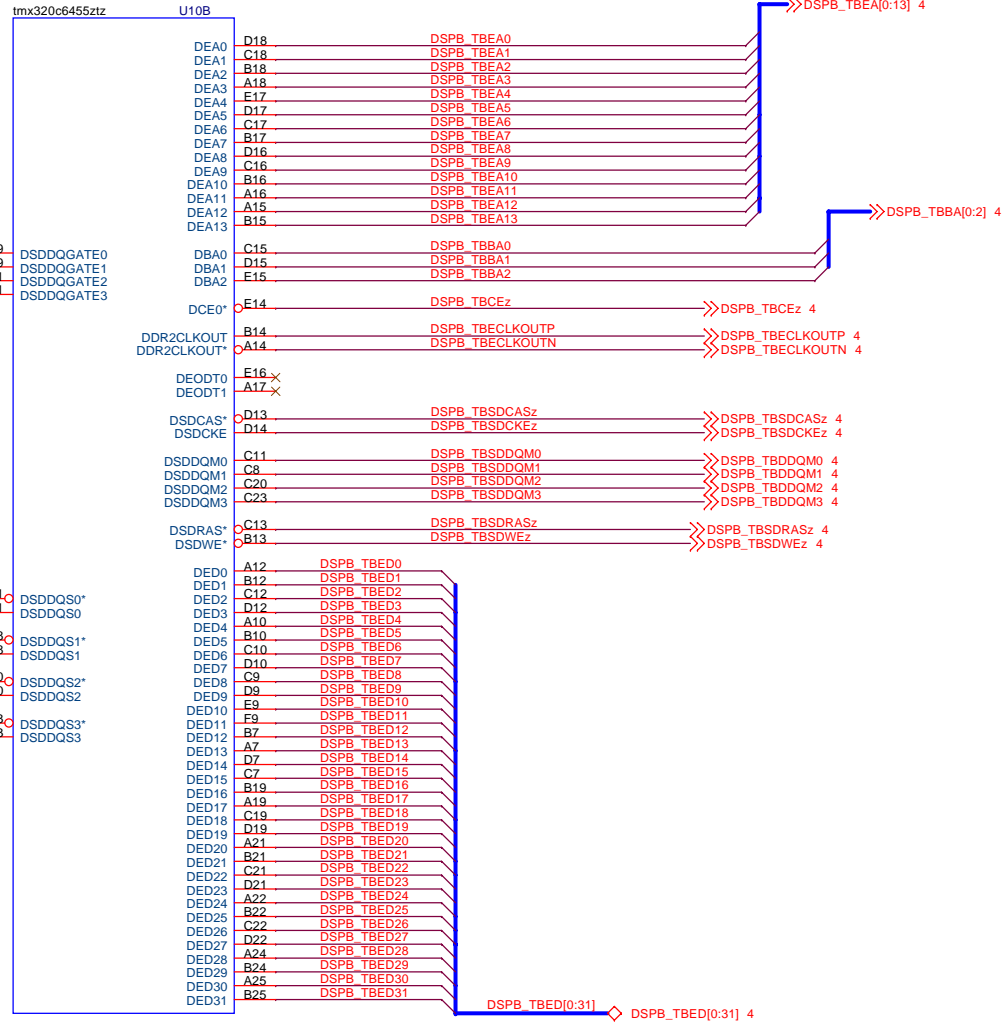
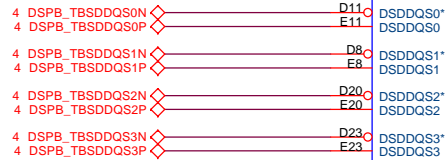
SPECTRUM DIGITAL INCORPORATED			
Title: TMS320C645X Mezzaine Card			
Page Contents: Title Block			
Size:B	DWG NO	508632-0001	Revision: C
Date: Monday, June 26, 2006		Sheet 1	of 22



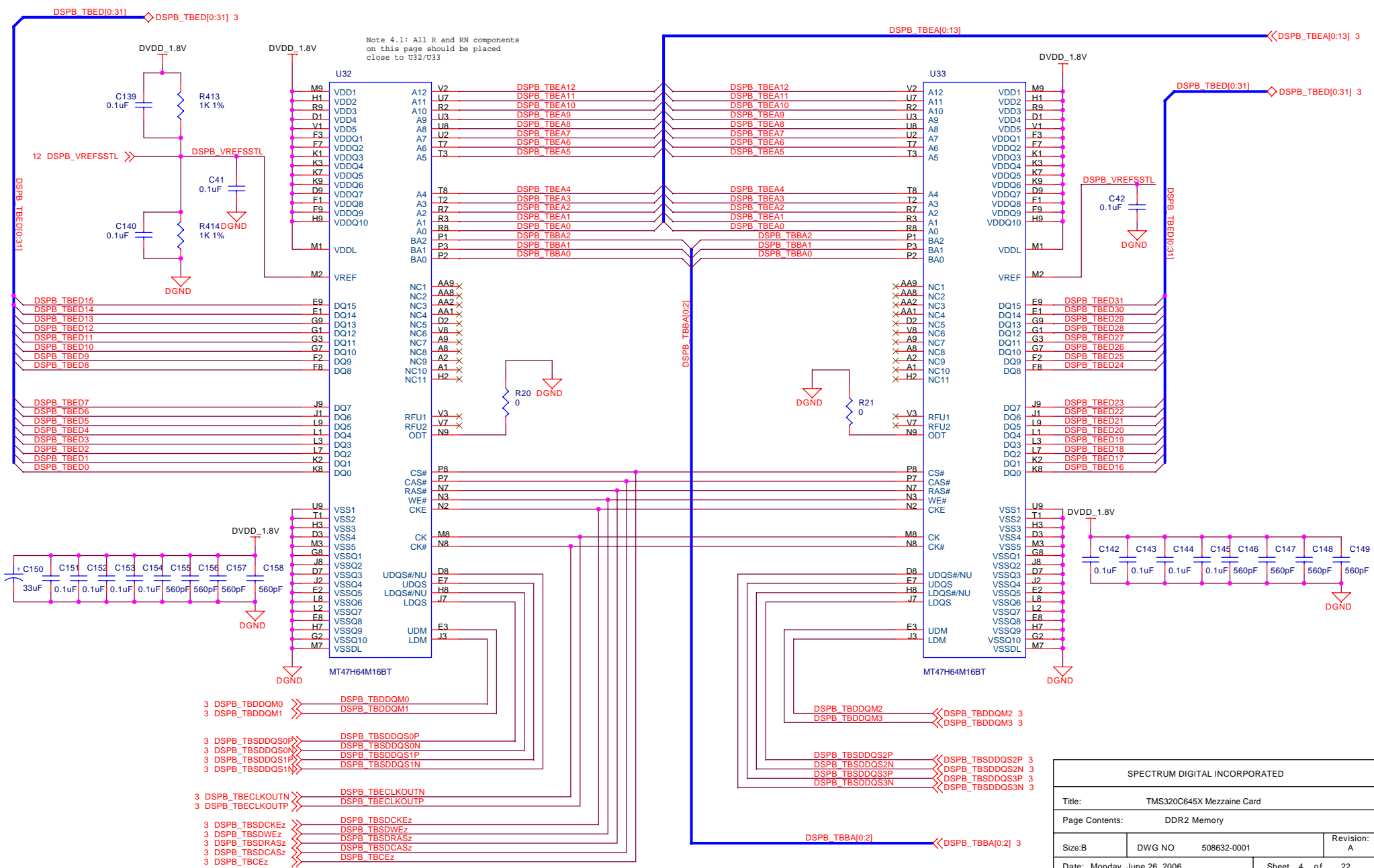
SPECTRUM DIGITAL INCORPORATED			
Title: TMS320C645X Mezzaine Card			
Page Contents: 6455 CLOCK INPUTS			
Size: B	DWG NO	508632-0001	Revision: C
Date: Monday, June 26, 2006		Sheet 2 of 22	

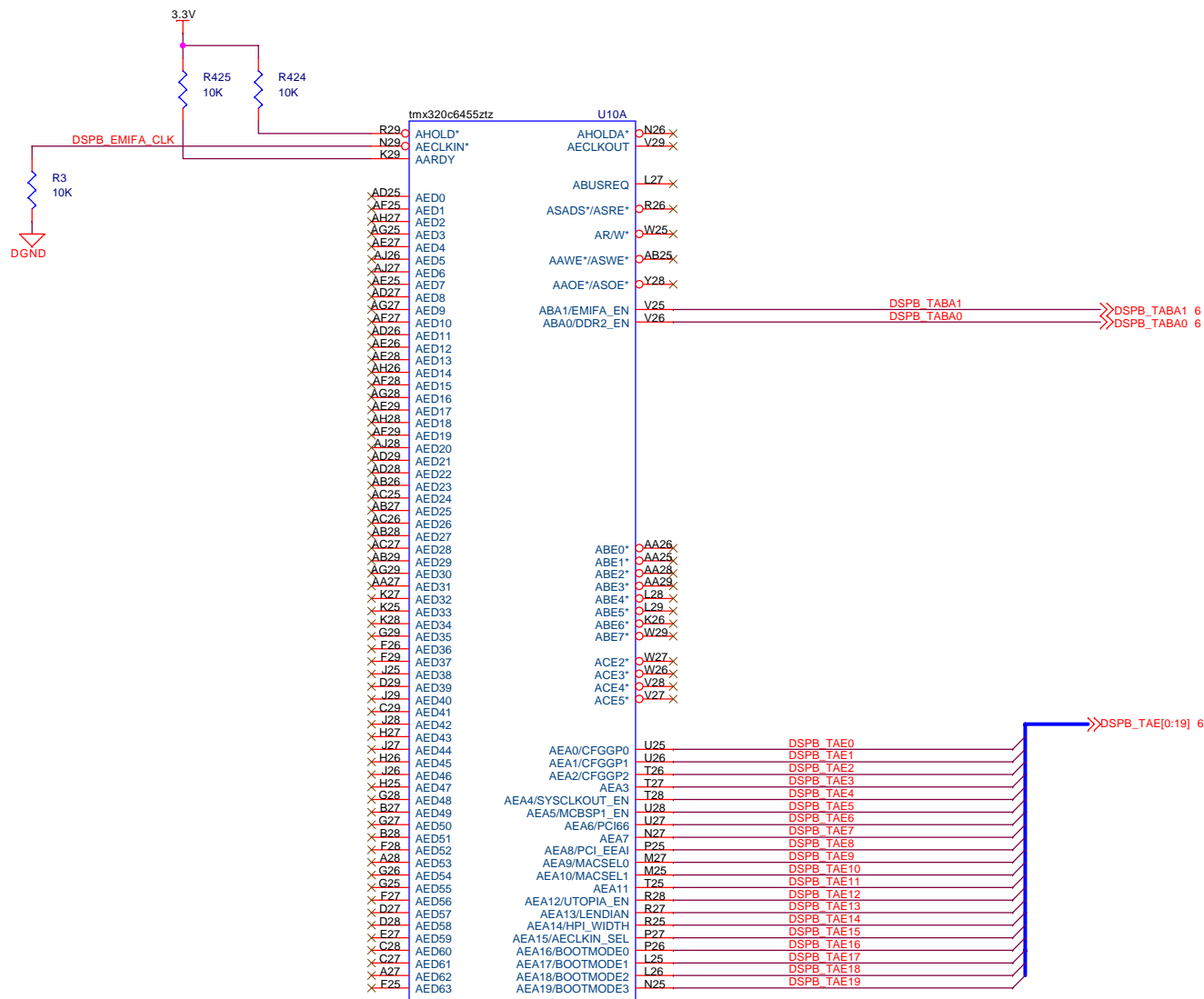
NOTE: Route DSDDQGATE0 signals needs to run to DDR memories near D15-D0 and back to DSDDQGATE1.

NOTE: Route DSDDQGATE2 signals needs to run to DDR memories near D31-D16 and back to DSDDQGATE3.

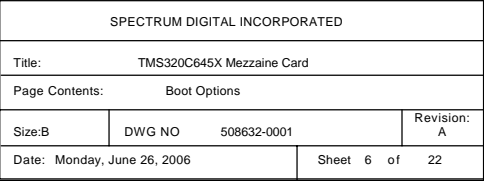


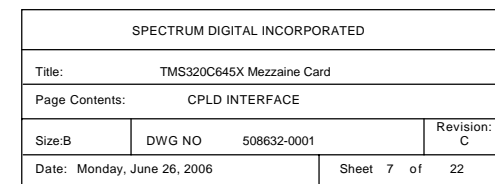
SPECTRUM DIGITAL INCORPORATED			
Title: TMS320C645X Mezzaine Card			
Page Contents: 6455 DDR Interface			
Size:B	DWG NO	508632-0001	Revision: A
Date: Monday, June 26, 2006		Sheet 3 of 22	

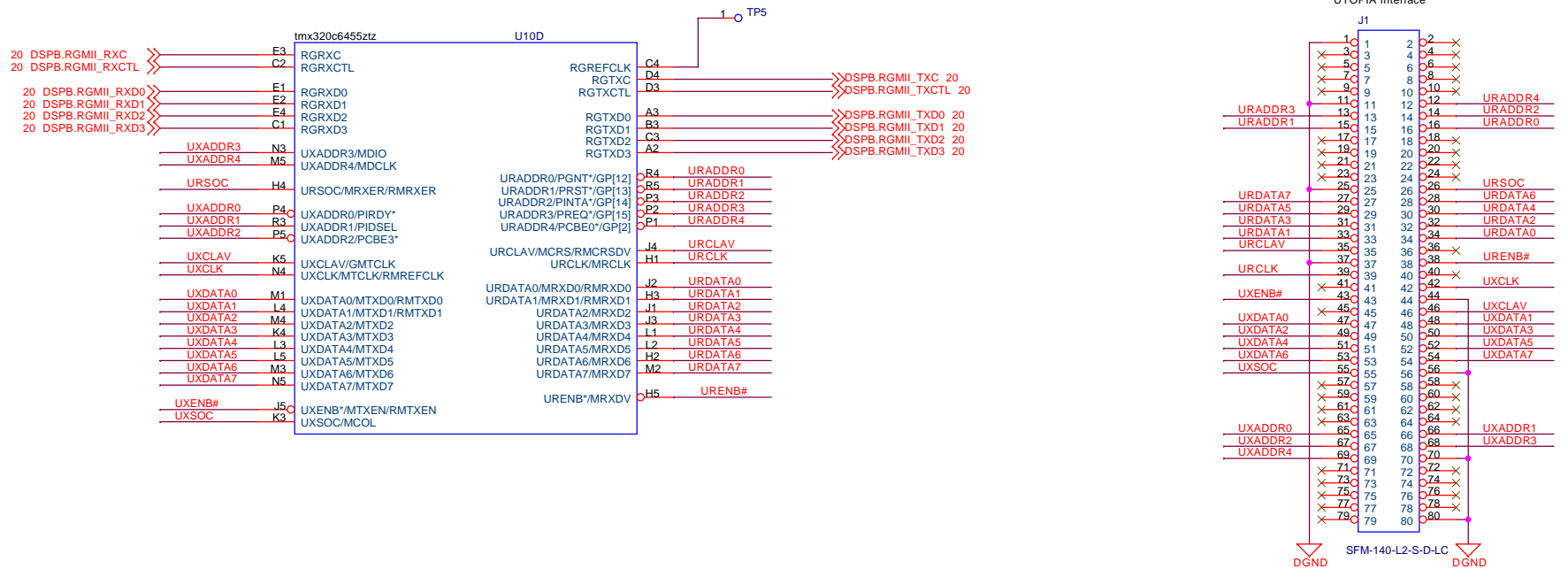


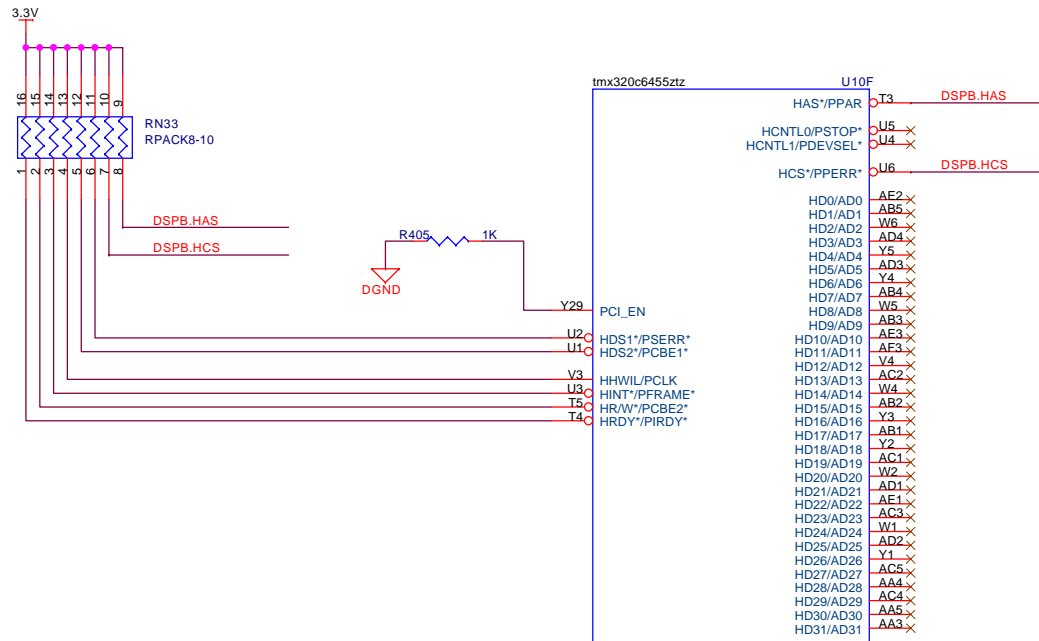


SPECTRUM DIGITAL INCORPORATED			
Title: TMS320C645X Mezzanine Card			
Page Contents: 6455 Emif A Interface			
Size: B	DWG NO	508632-0001	Revision: A
Date: Monday, June 26, 2006	Sheet 5 of 22		

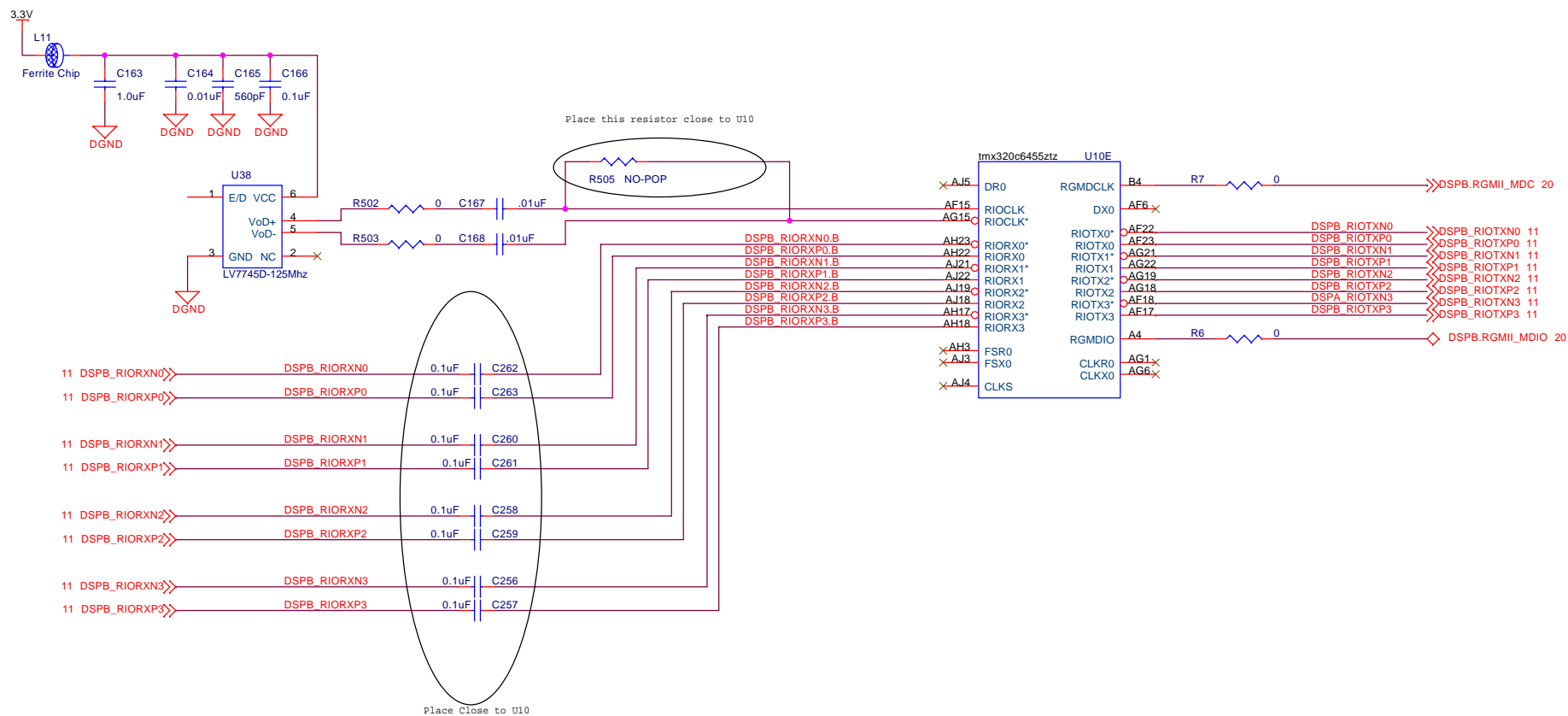








SPECTRUM DIGITAL INCORPORATED			
Title: TMS320C645X Mezzaine Card			
Page Contents: PCI/HOST PORT INTERFACE			
Size: B	DWG NO	508632-0001	Revision: C
Date: Monday, June 26, 2006	Sheet 9 of 22		



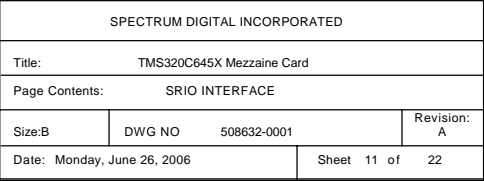
SPECTRUM DIGITAL INCORPORATED

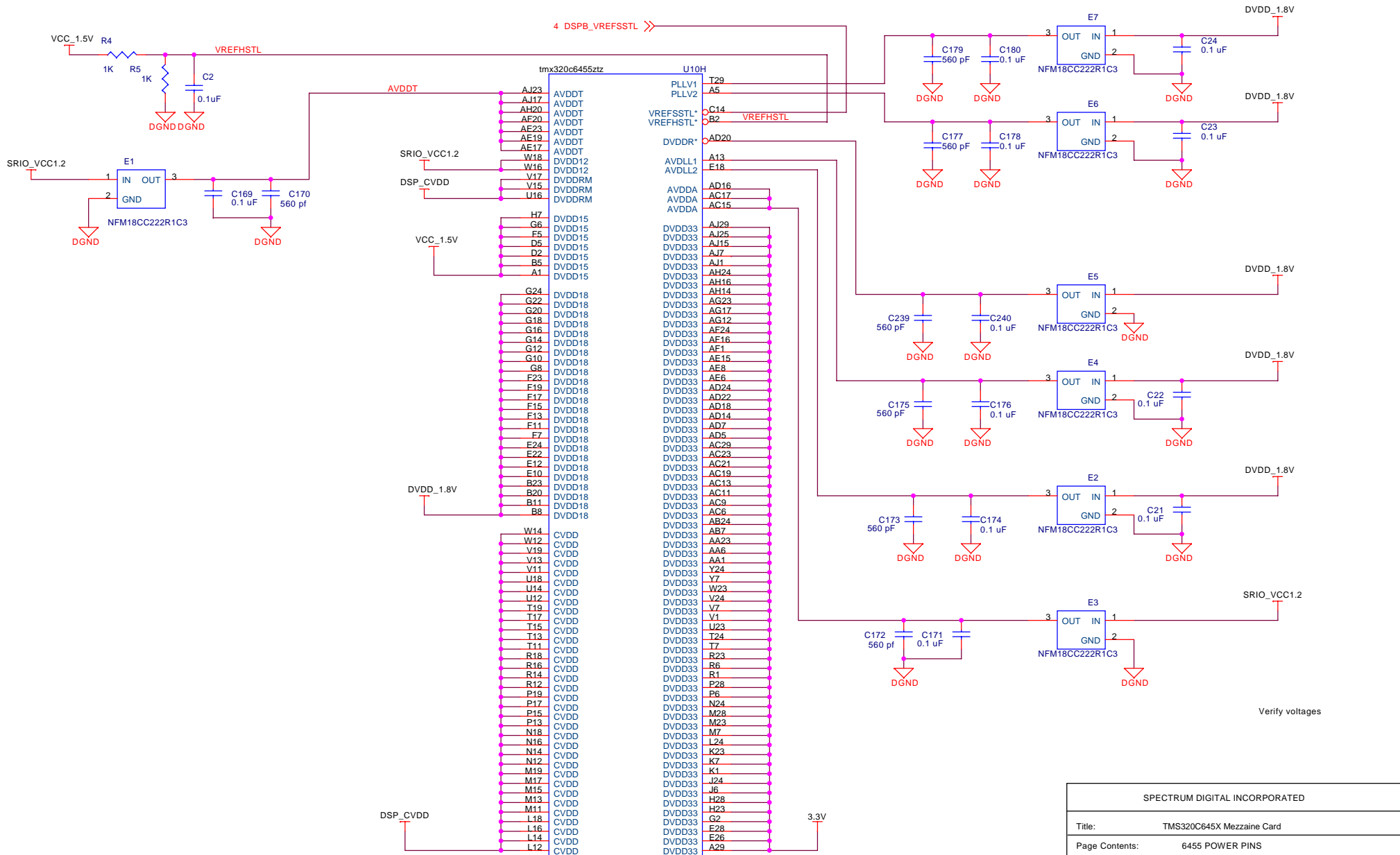
Title: TMS320C645X Mezzaine Card

Page Contents: SRIO INTERFACE

Size: B DWG NO 508632-0001 Revision: A

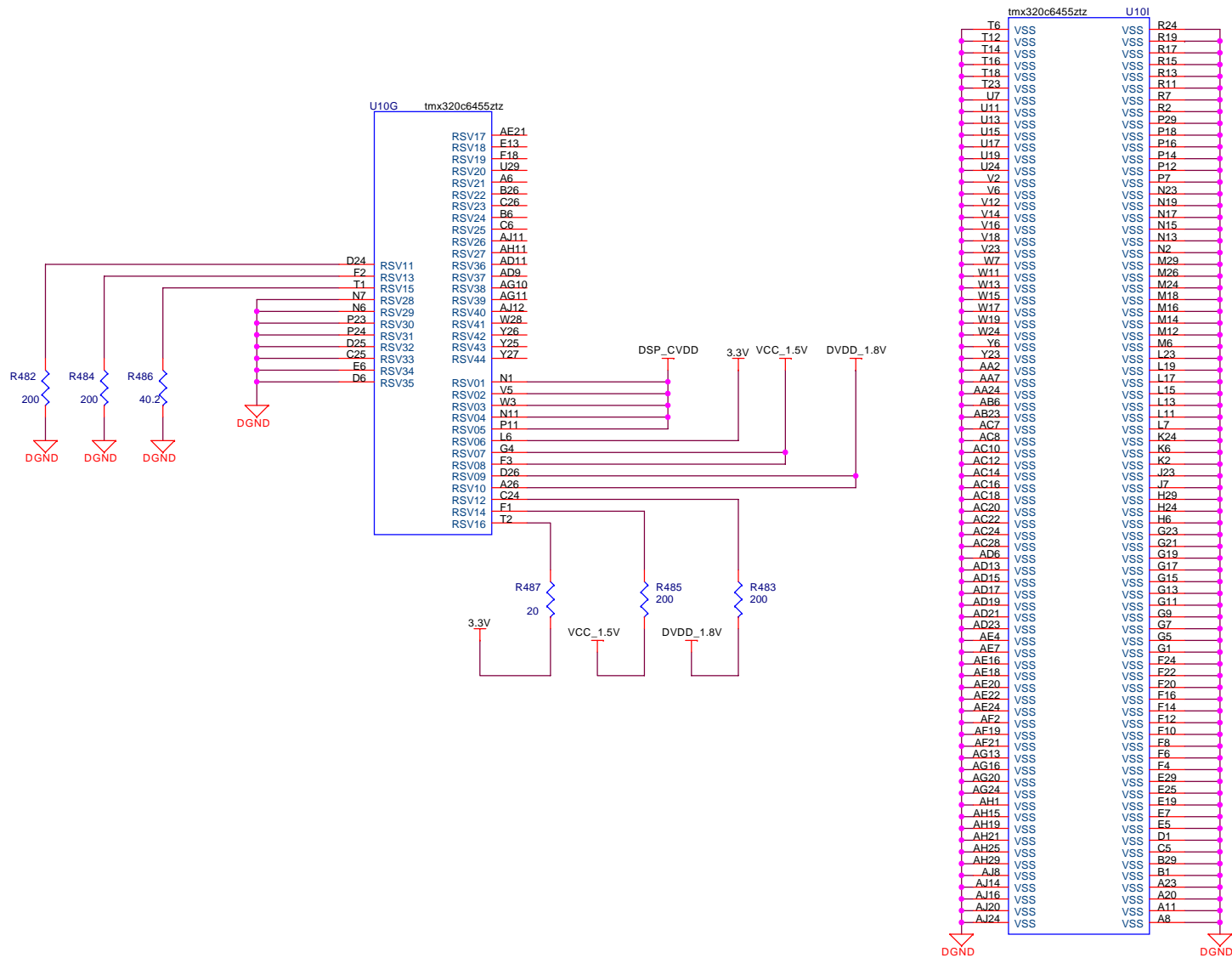
Date: Monday, June 26, 2006 Sheet 10 of 22



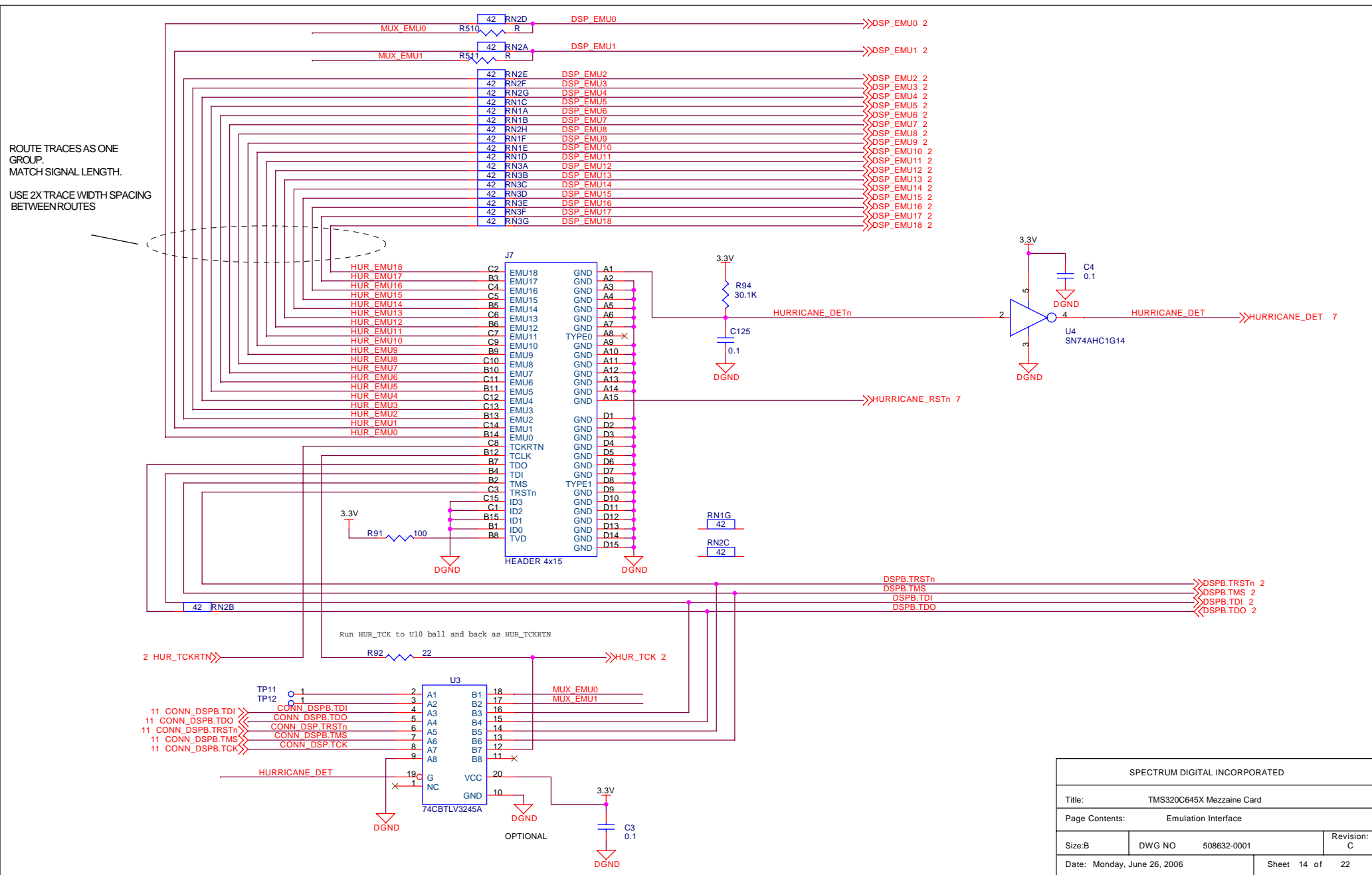


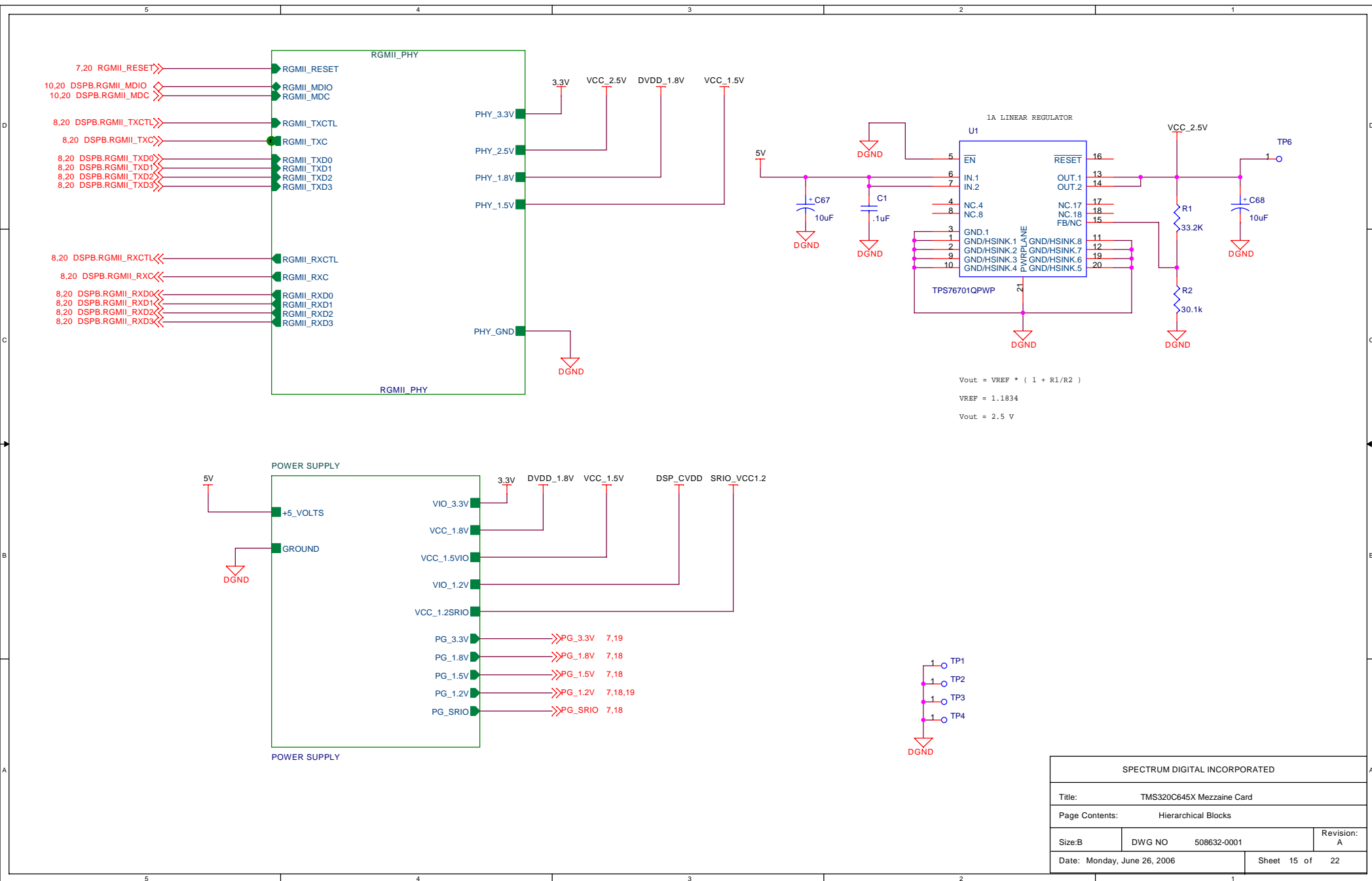
Verify voltages

SPECTRUM DIGITAL INCORPORATED			
Title: TMS320C645X Mezzaine Card			
Page Contents: 6455 POWER PINS			
Size: B	DWG NO	508632-0001	Revision: A
Date: Monday, June 26, 2006		Sheet 12 of	22

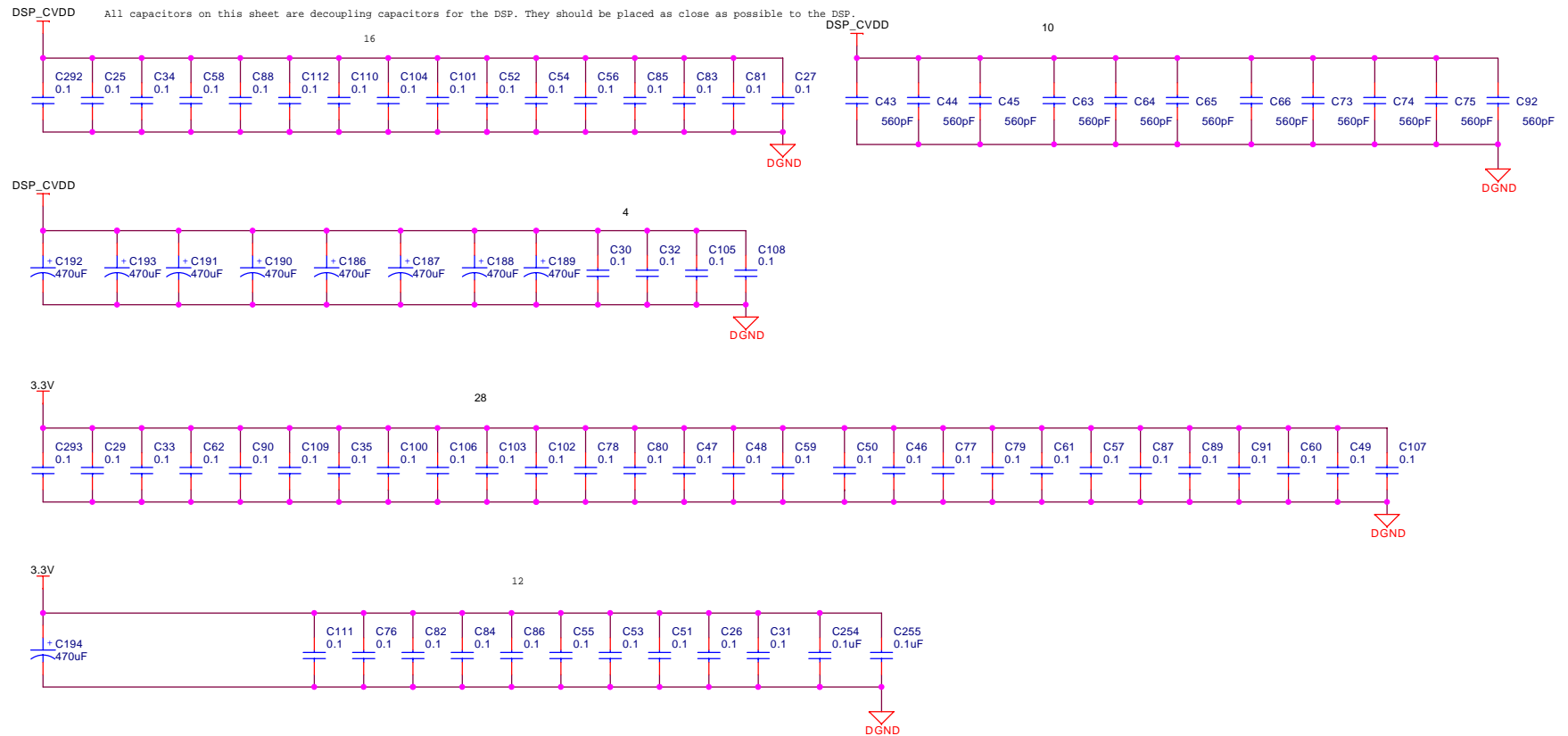


SPECTRUM DIGITAL INCORPORATED			
Title: TMS320C645X Mezzaine Card			
Page Contents: 6455 POWER PINS			
Size:B	DWG NO	508632-0001	Revision: A
Date:	Monday, June 26, 2006	Sheet 13 of	22

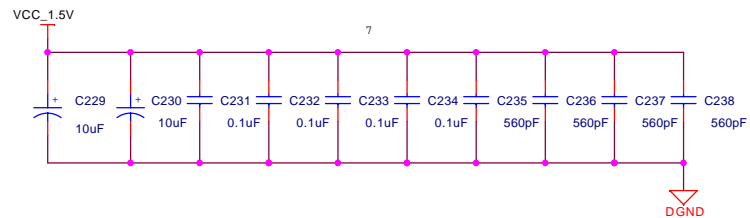
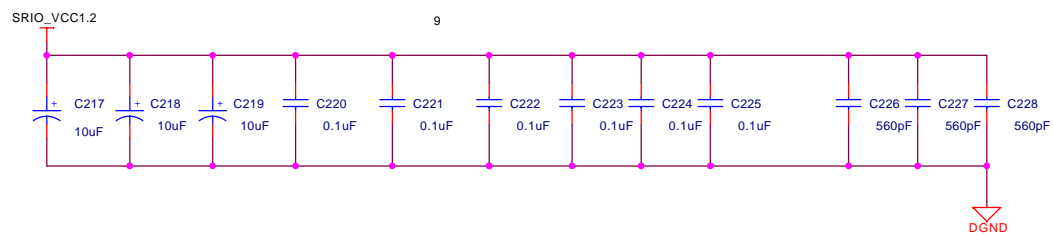
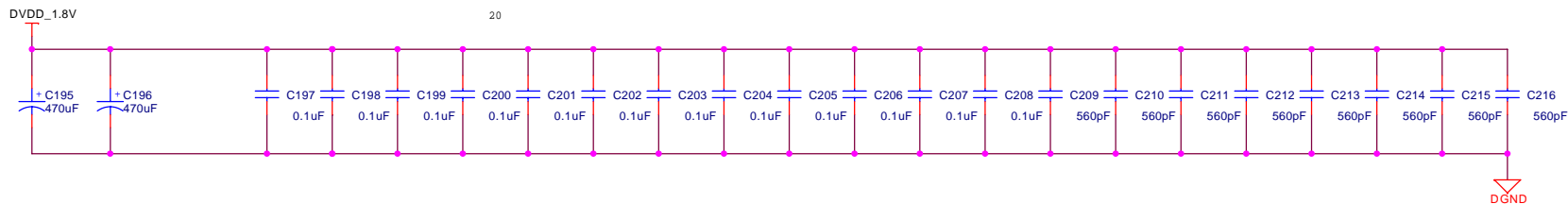




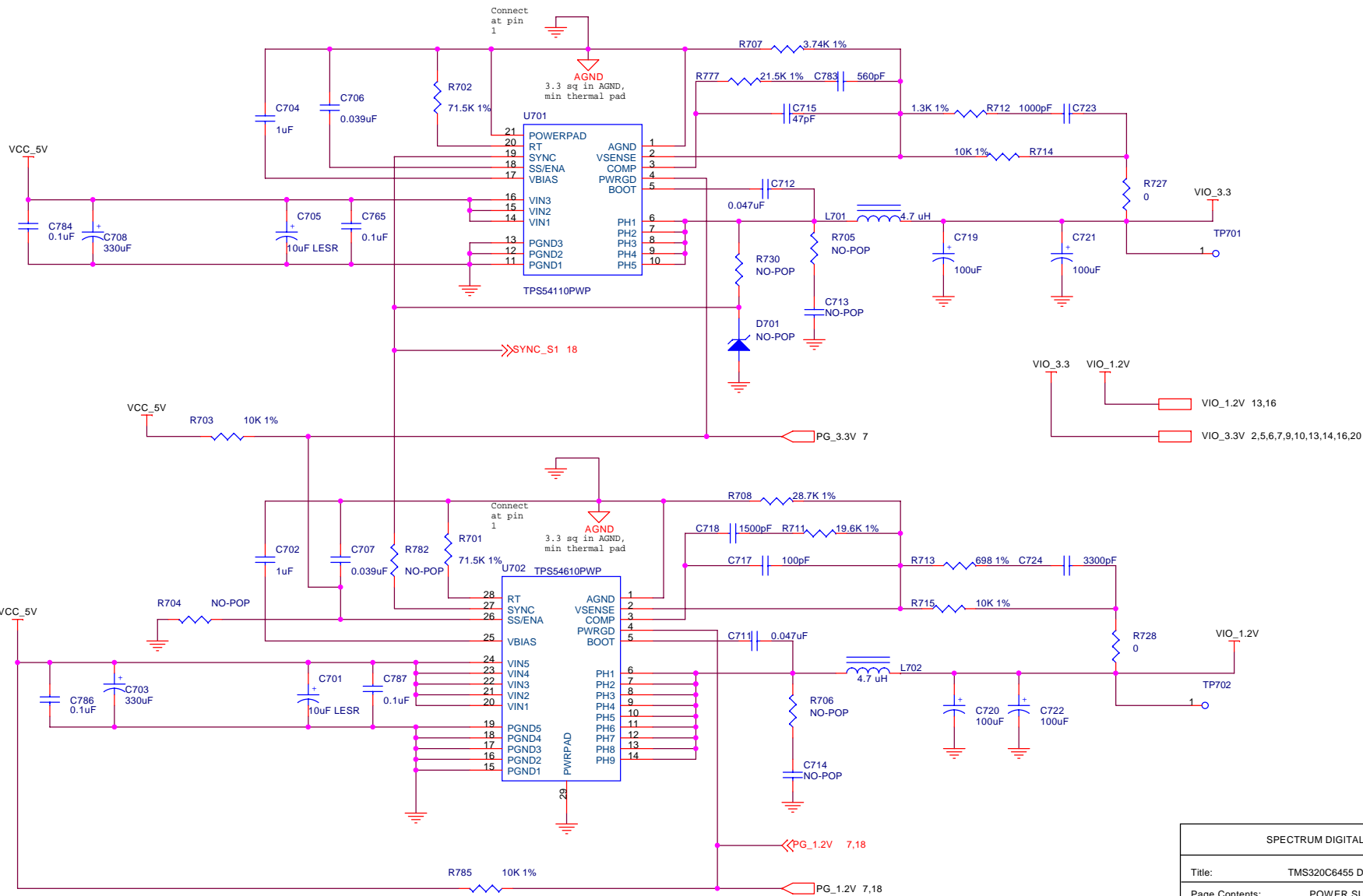
SPECTRUM DIGITAL INCORPORATED			
Title: TMS320C645X Mezzanine Card			
Page Contents: Hierarchical Blocks			
Size: B	DWG NO	508632-0001	Revision: A
Date: Monday, June 26, 2006			Sheet 15 of 22



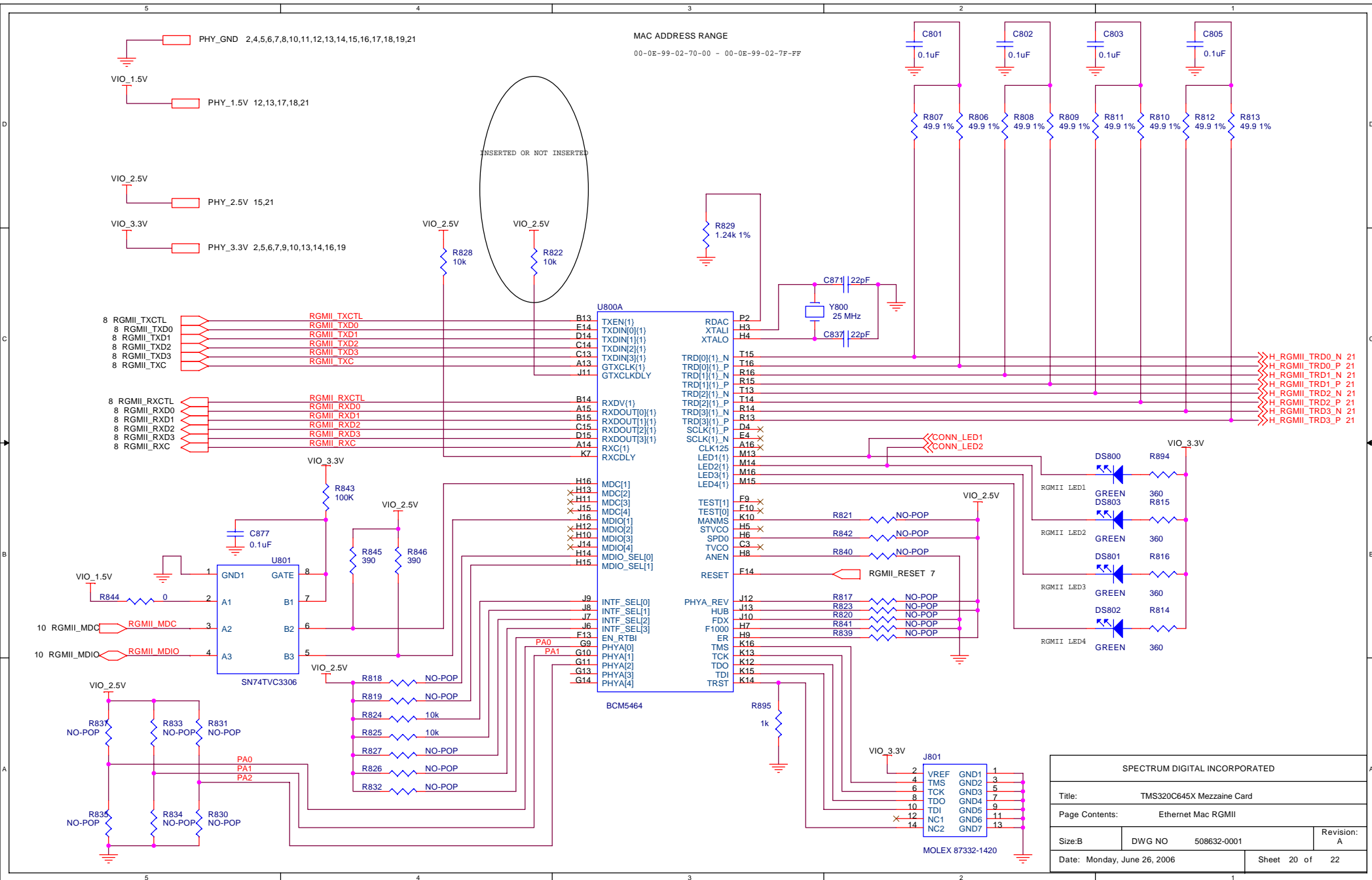
SPECTRUM DIGITAL INCORPORATED			
Title: TMS320C645X Mezzaine Card			
Page Contents: Decoupling Capacitors			
Size: B	DWG NO	508632-0001	Revision: A
Date: Monday, June 26, 2006		Sheet 16 of 22	



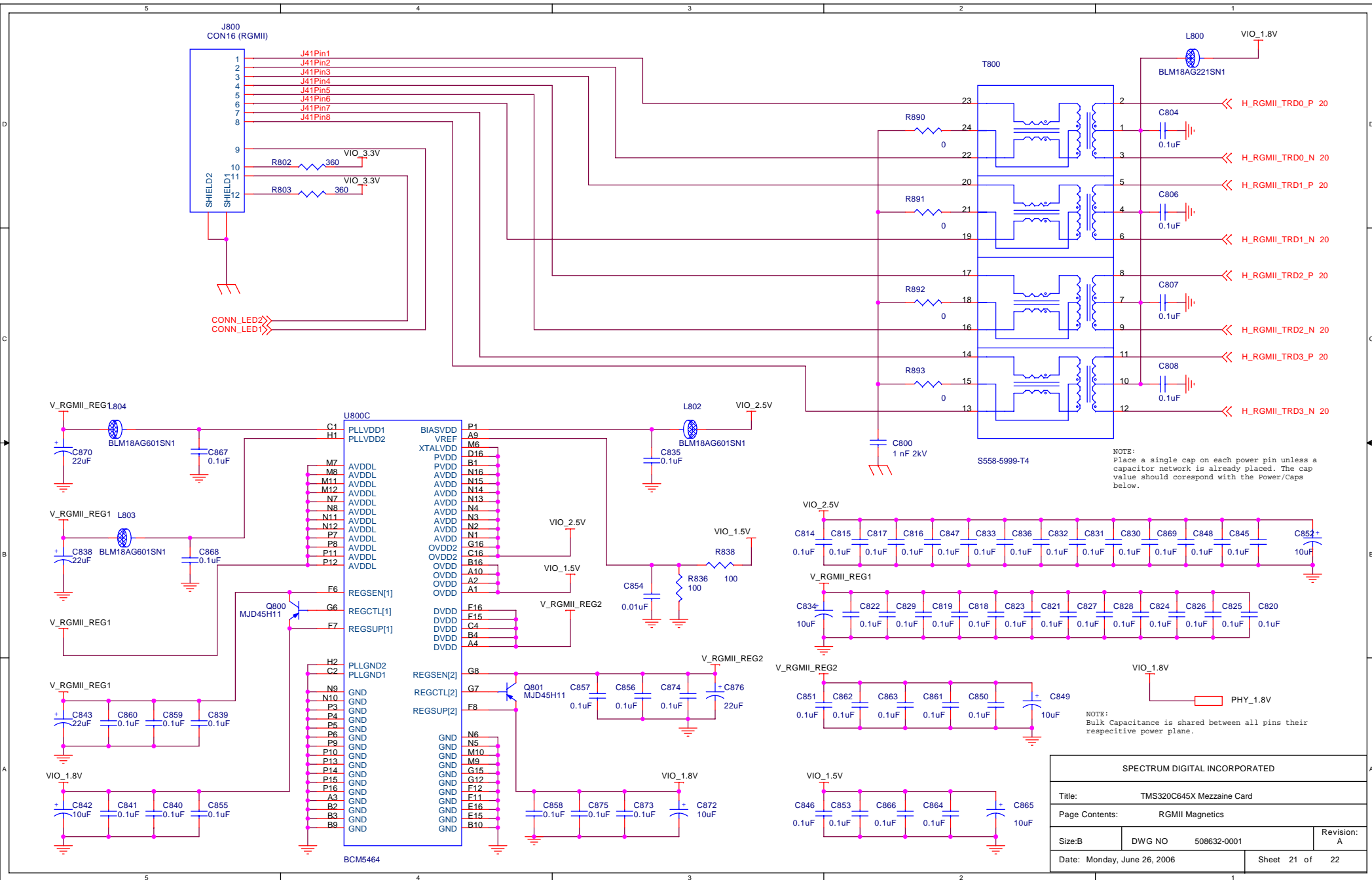
SPECTRUM DIGITAL INCORPORATED			
Title:		TMS320C645X Mezzaine Card	
Page Contents:		Decoupling Capacitors	
Size: B	DWG NO	508632-0001	Revision: A
Date: Monday, June 26, 2006		Sheet 17 of 22	



SPECTRUM DIGITAL INCORPORATED			
Title: TMS320C6455 DSK			
Page Contents: POWER SUPPLY			
Size: B	DWG NO	508632-0001	Revision: A
Date: Monday, June 26, 2006			Sheet 19 of 22



SPECTRUM DIGITAL INCORPORATED			
Title: TMS320C645X Mezzanine Card			
Page Contents: Ethernet Mac RGMII			
Size: B	DWG NO	508632-0001	Revision: A
Date: Monday, June 26, 2006		Sheet 20 of 22	



U800B			
X A7	GTCLK(3)	TRD(0)(2)_N	R10
X A11	GTCLK(2)	TRD(0)(2)_P	R9
X A5	GTCLK(4)	TRD(0)(3)_N	T7
X A12	RXC(2)	TRD(0)(3)_P	T8
X A8	RXC(3)	TRD(0)(4)_N	R2
X A6	RXC(4)	TRD(0)(4)_P	R1
X D13	RXD(0)(2)	TRD(1)(2)_N	T9
X C10	RXD(0)(3)	TRD(1)(2)_P	T10
X E6	RXD(0)(4)	TRD(1)(3)_N	R8
X E13	RXD(1)(2)	TRD(1)(3)_P	R7
X D10	RXD(1)(3)	TRD(1)(4)_N	T1
X E7	RXD(1)(4)	TRD(1)(4)_P	T2
X D12	RXD(2)(2)	TRD(2)(2)_N	R12
X E10	RXD(2)(3)	TRD(2)(2)_P	R11
X D7	RXD(2)(4)	TRD(2)(3)_N	T5
X C12	RXD(3)(2)	TRD(2)(3)_P	T6
X D9	RXD(3)(3)	TRD(2)(4)_N	R4
X C7	RXD(3)(4)	TRD(2)(4)_P	R3
X B12	RXDV(2)	TRD(3)(2)_N	T11
X C9	RXDV(3)	TRD(3)(2)_P	T12
X B7	RXDV(4)	TRD(3)(3)_N	R6
X E12	TXD(0)(2)	TRD(3)(3)_P	R5
X E9	TXD(0)(3)	TRD(3)(4)_N	T3
X B5	TXD(0)(4)	TRD(3)(4)_P	T4
X E11	TXD(1)(2)	SGIN(1)+	D1
X E8	TXD(1)(3)	SGIN(1)+	E1
X C5	TXD(1)(4)	SGIN(2)+	E1
X D11	TXD(2)(2)	SGIN(2)+	G1
X D8	TXD(2)(3)	SGIN(3)+	K1
X D6	TXD(2)(4)	SGIN(3)+	J1
X C11	TXD(3)(2)	SGIN(4)+	M1
X C8	TXD(3)(3)	SGIN(4)+	L1
X C6	TXD(3)(4)	SGOUT(1)-	F5
X B6	TXEN(4)	SGOUT(1)+	D5
X B11	TXEN(2)	SGOUT(2)-	G5
X B8	TXEN(3)	SGOUT(2)+	F5
X L4	SCLK(4)_P	SGOUT(3)-	K5
X M4	SCLK(4)_N	SGOUT(3)+	J5
X J4	SCLK(3)_P	SGOUT(4)-	M5
X K4	SCLK(3)_N	SGOUT(4)+	L5
X F4	SCLK(2)_P	DNC	E2
X G4	SCLK(2)_N	DNC	E3
X L9	LED1(2)	DNC	F2
X L15	LED1(3)	DNC	K8
X K6	LED1(4)	DNC	K9
X L10	LED2(2)	DNC	K11
X L13	LED2(3)	DNC	D2
X L6	LED2(4)	DNC	D3
X L11	LED3(2)	DNC	F3
X L16	LED3(3)	DNC	G2
X L7	LED3(4)	DNC	G3
X L12	LED4(2)	DNC	J2
X L14	LED4(3)	DNC	J3
X L8	LED4(4)	DNC	K2
X M3	DNC	DNC	K3
X M2	DNC	DNC	L2
X L3	DNC	DNC	

BCM5464

SPECTRUM DIGITAL INCORPORATED			
Title: TMS320C645X Mezzaine Card			
Page Contents: Ethernet Mac RGMII- Not used			
Size:B	DWG NO	508632-0001	Revision: A
Date: Monday, June 26, 2006		Sheet 22 of 22	