

Figure 1 Simulation Block Diagram

Lmh6401 was used in my design, Now during the simulation, I found that the common-mode voltage at the input end of P&N is being attenuated.

Now I have two questions:

1. Is my simulation result correct?
2. What is the block diagram of the input stage of LMH6401? Why is the common-mode voltage at the PN end being attenuated?

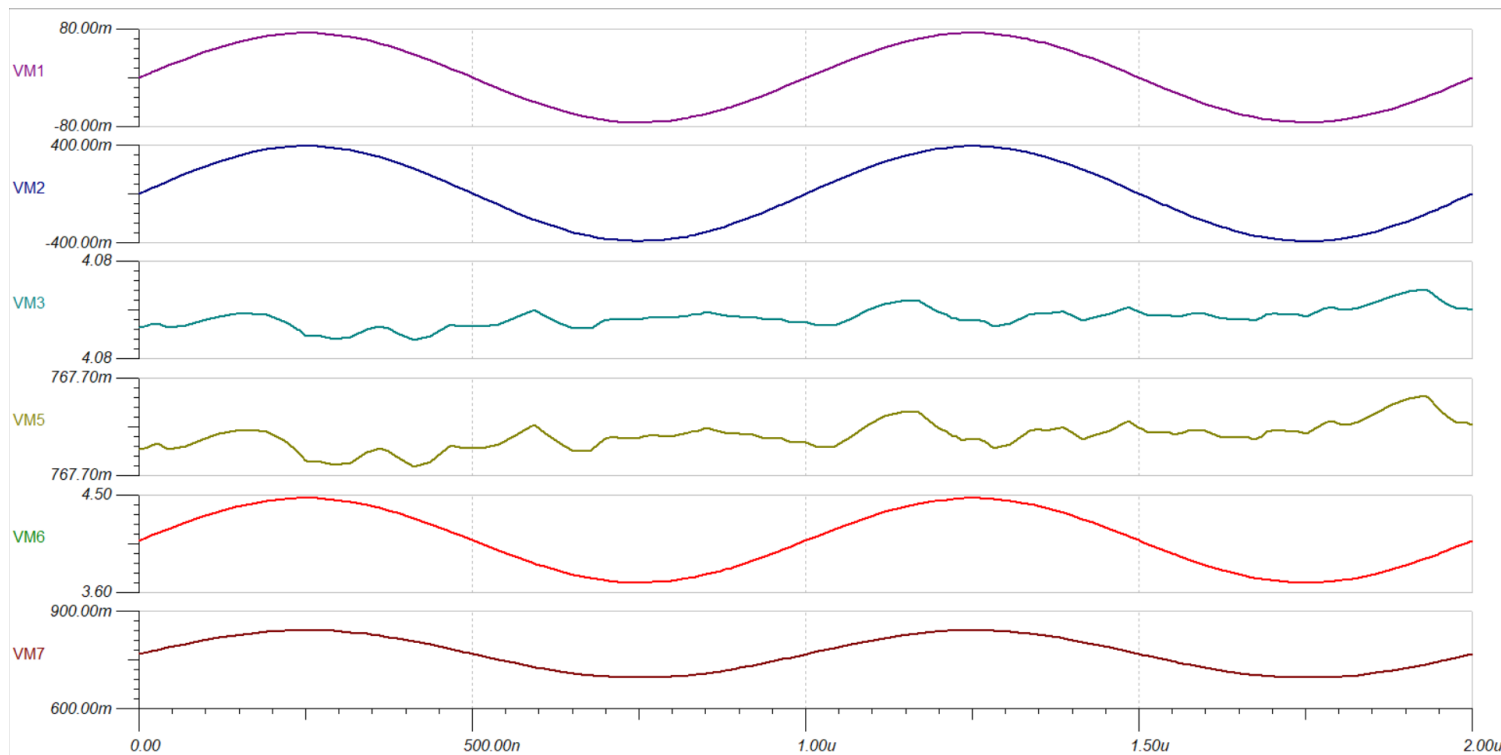


Figure 2 Simulation Result