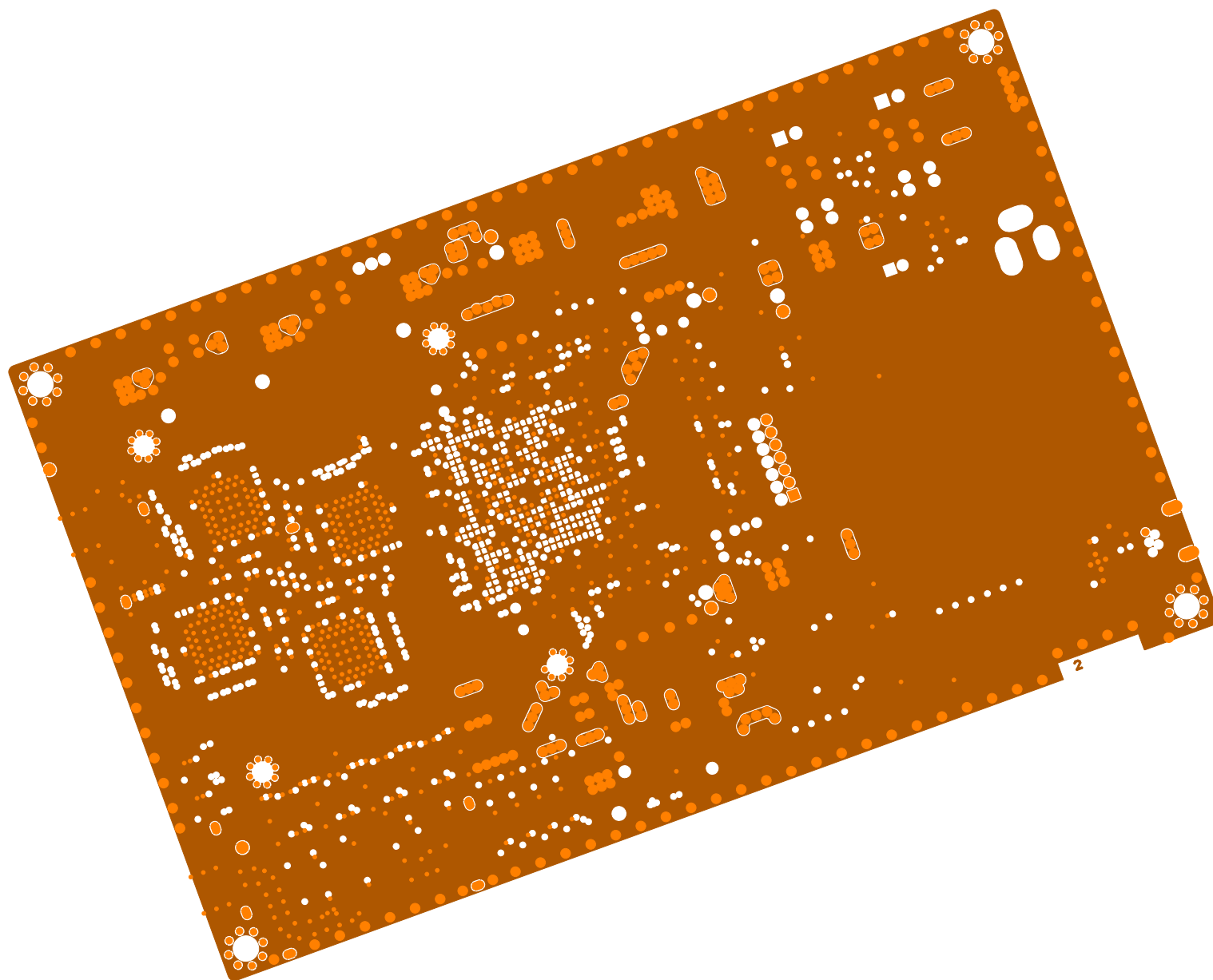
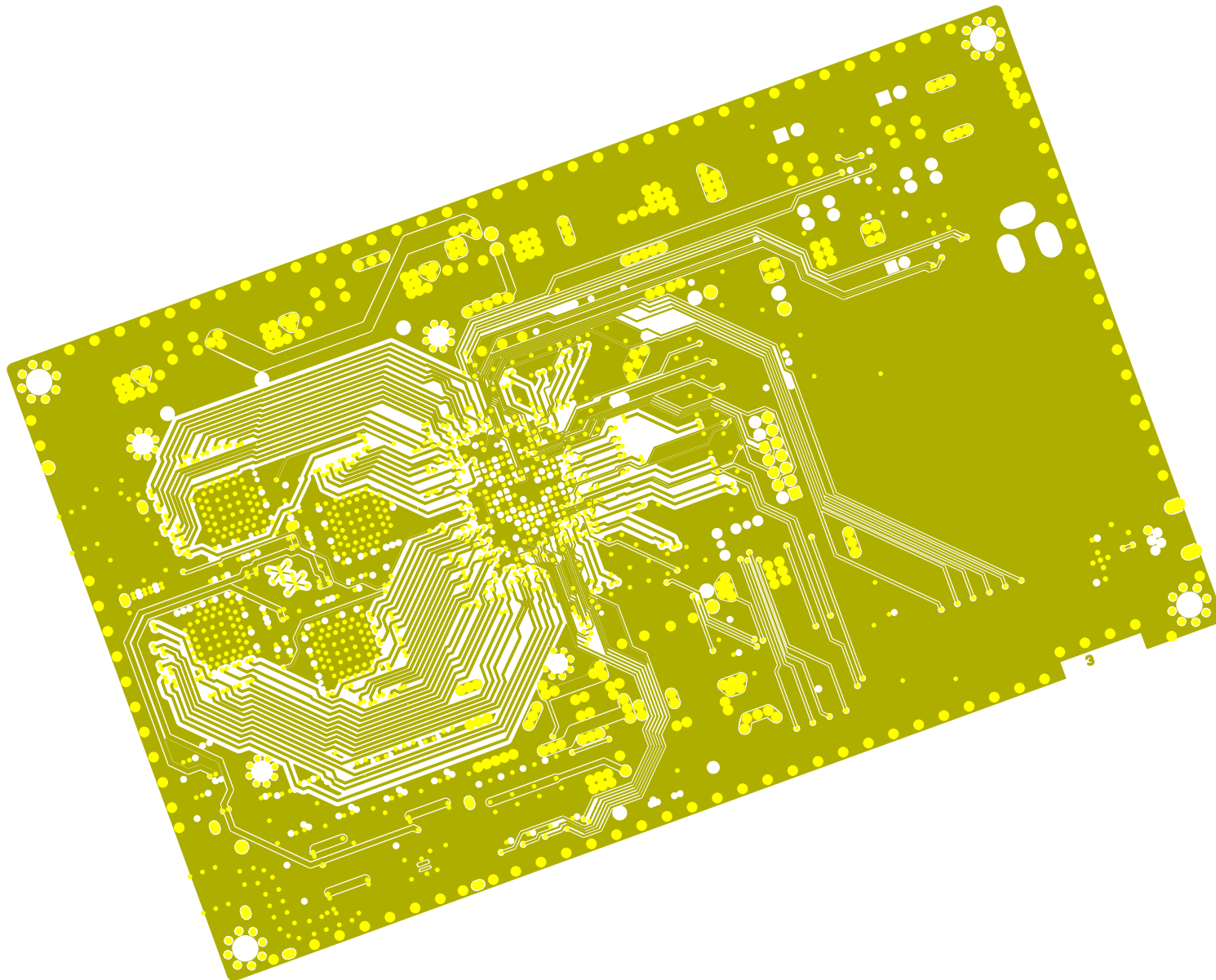


The board layout is intentionally rotated 20 degrees. The reason for this is that there are critical high-frequency traces on the board that will achieve better matching if they are routed at an angle relative to the direction of the glass fibers.

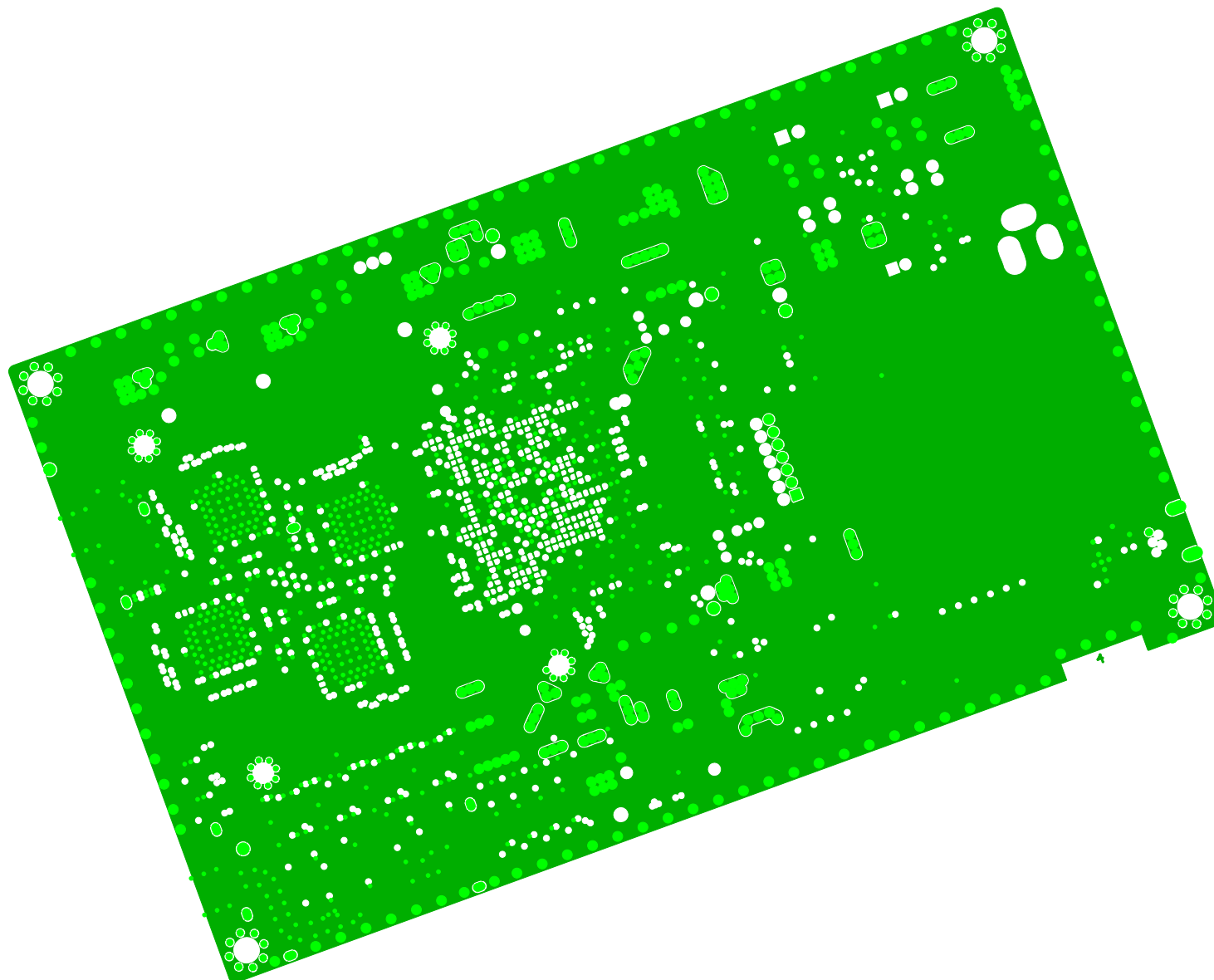
Please do not rotate the layout back. Let it stay in this angular position on the PCB panel.



Layer2 (GND)

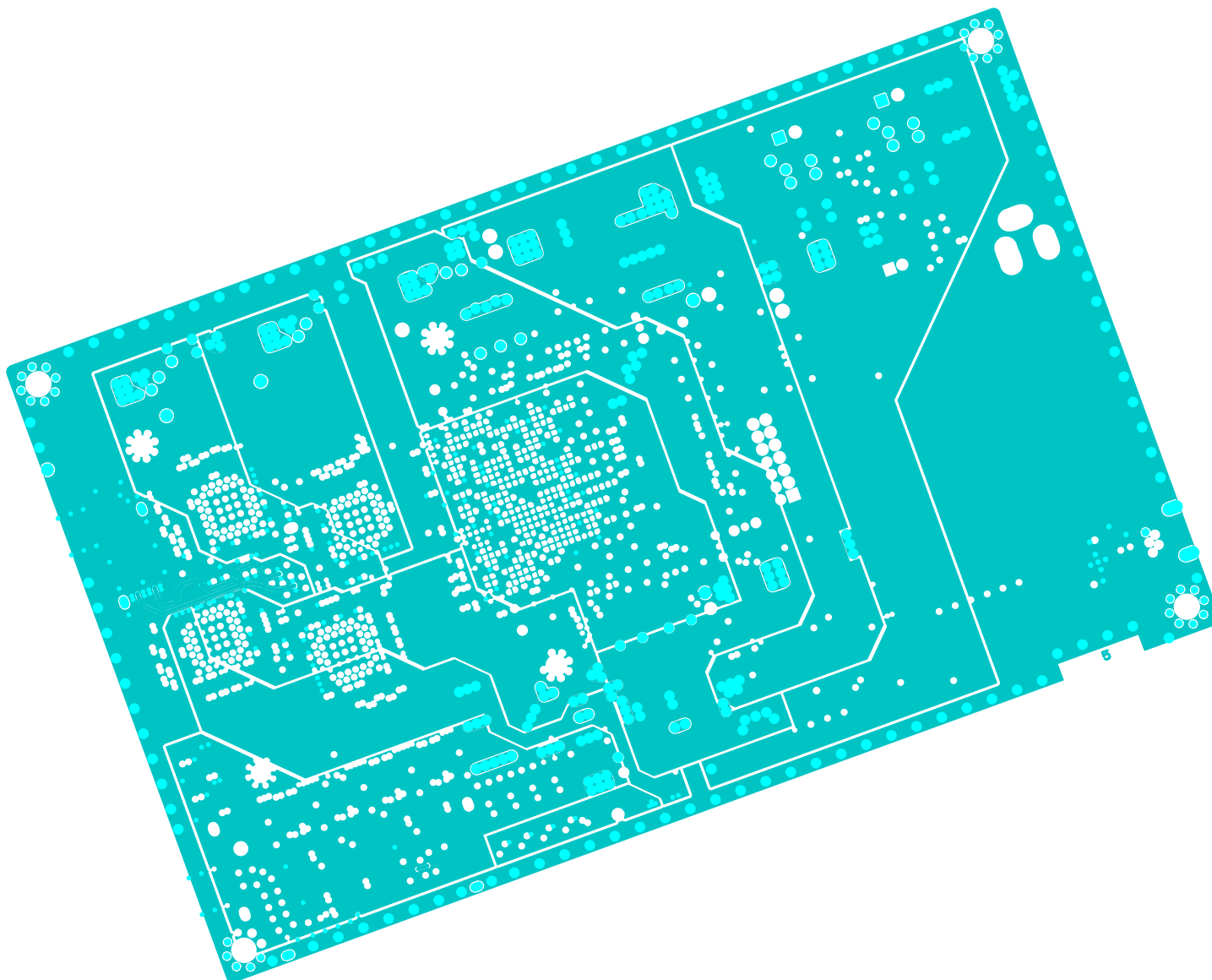


Layer 3

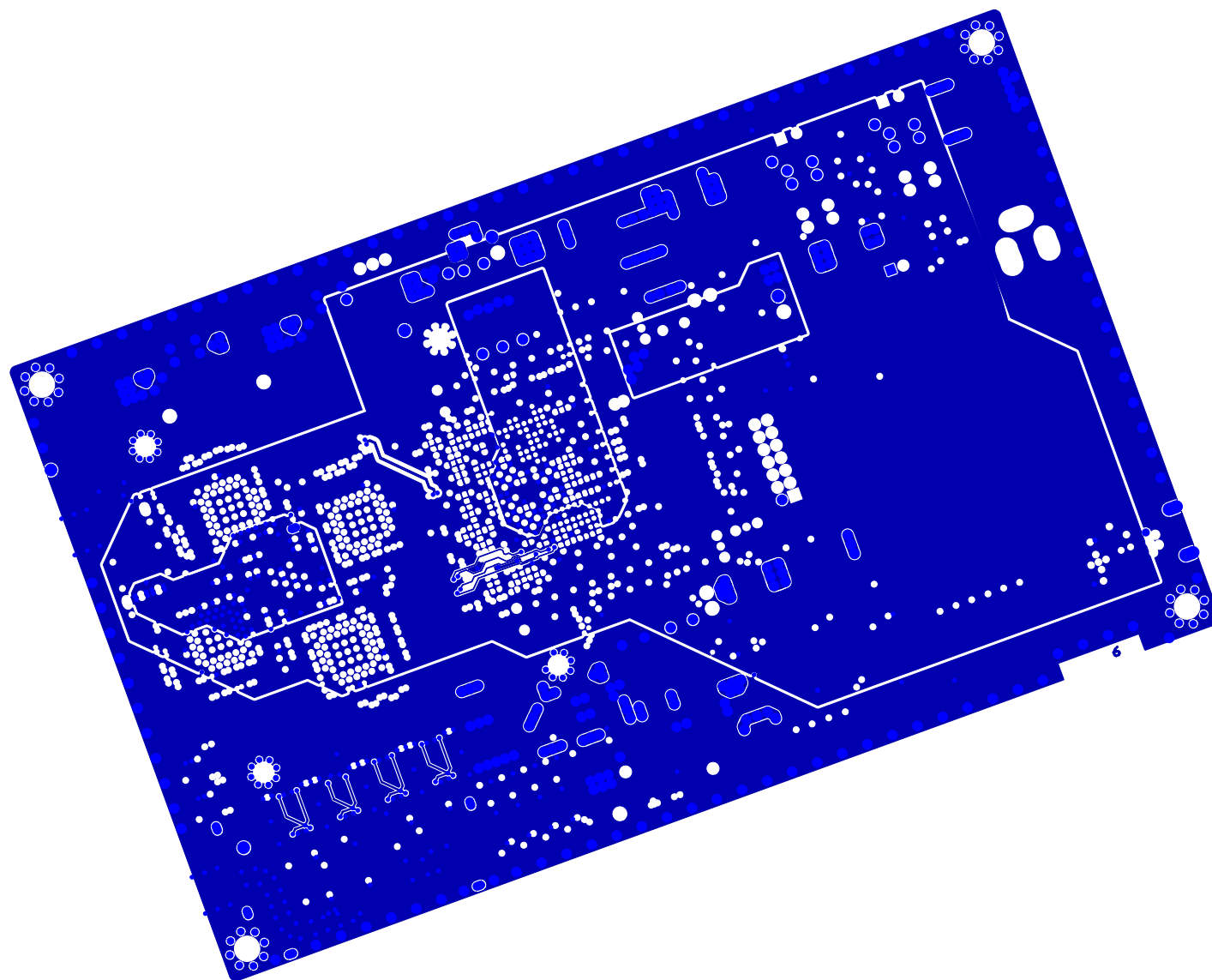


Layer 4 (GND)

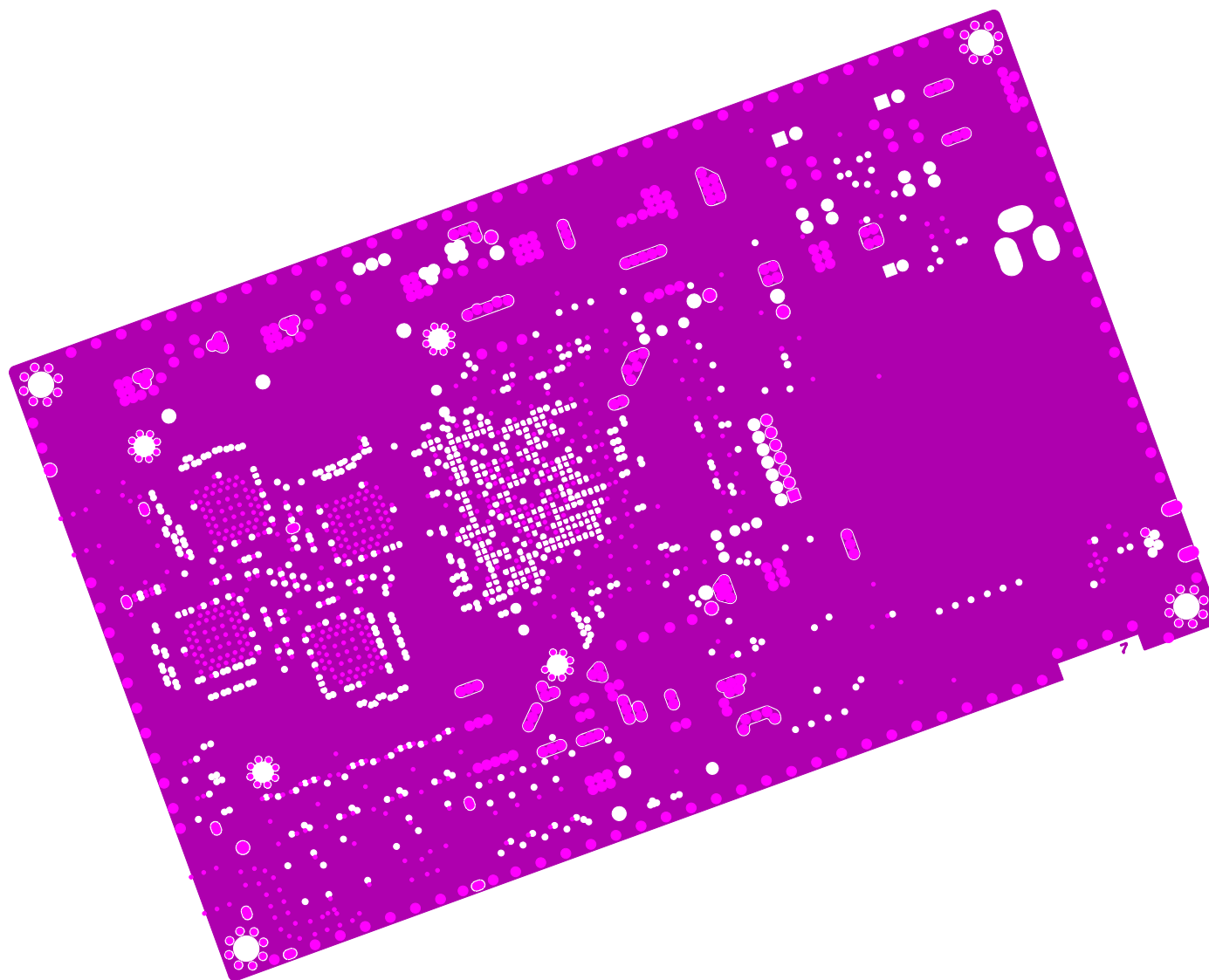
4



Layer5

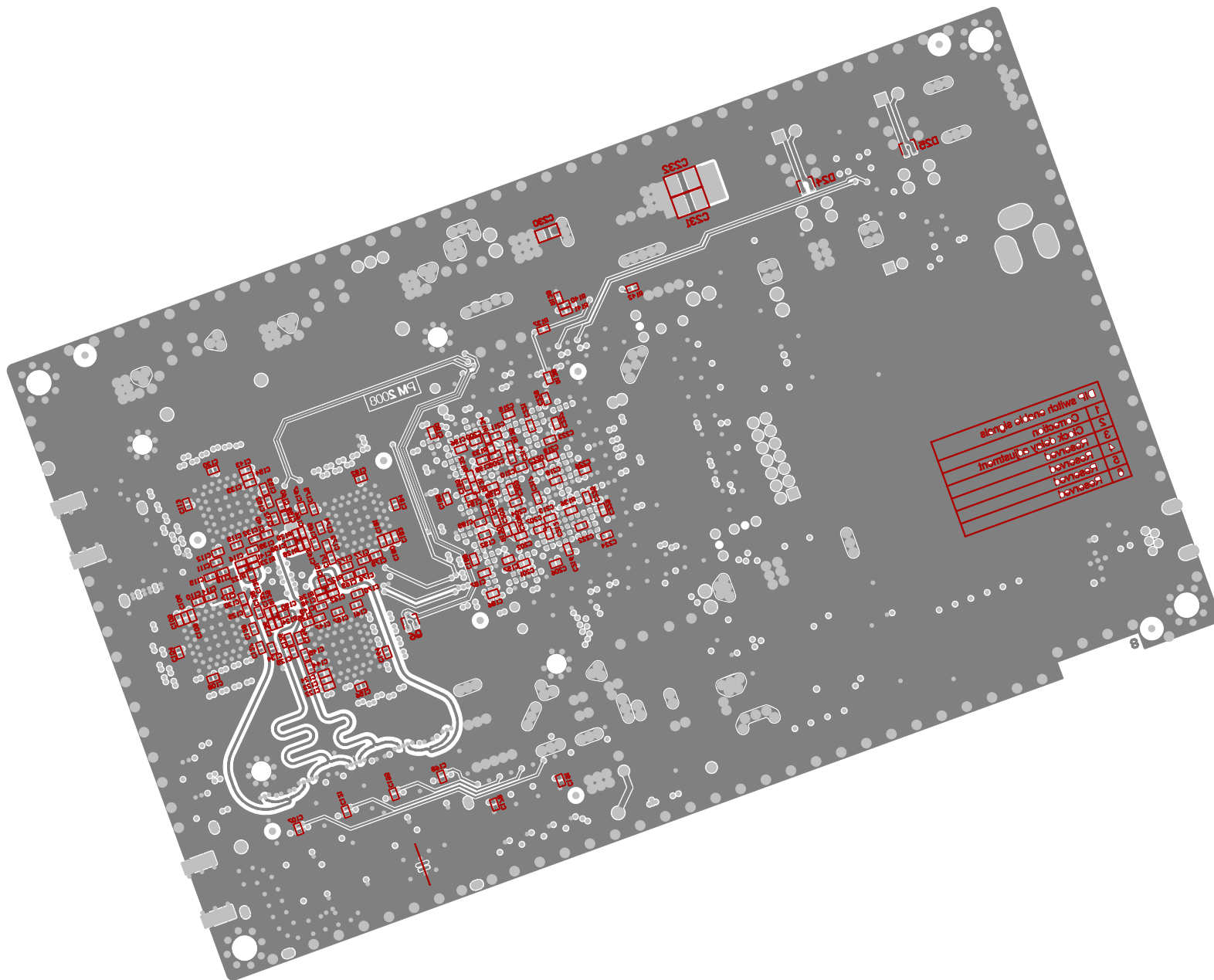


Layer 6



Layer7 (GND)





Layer8 bottom