

TABLE OF CONTENTS


PAGE	DESCRIPTION
1	Table of Contents and Revision History
2	Block Diagram
3	Carrier FMC Connector
4	HDMI Source
5	HDMI Sink
6	Clock Generator
7	Power Supplies
8	Extender FMC Connector

REVISION HISTORY

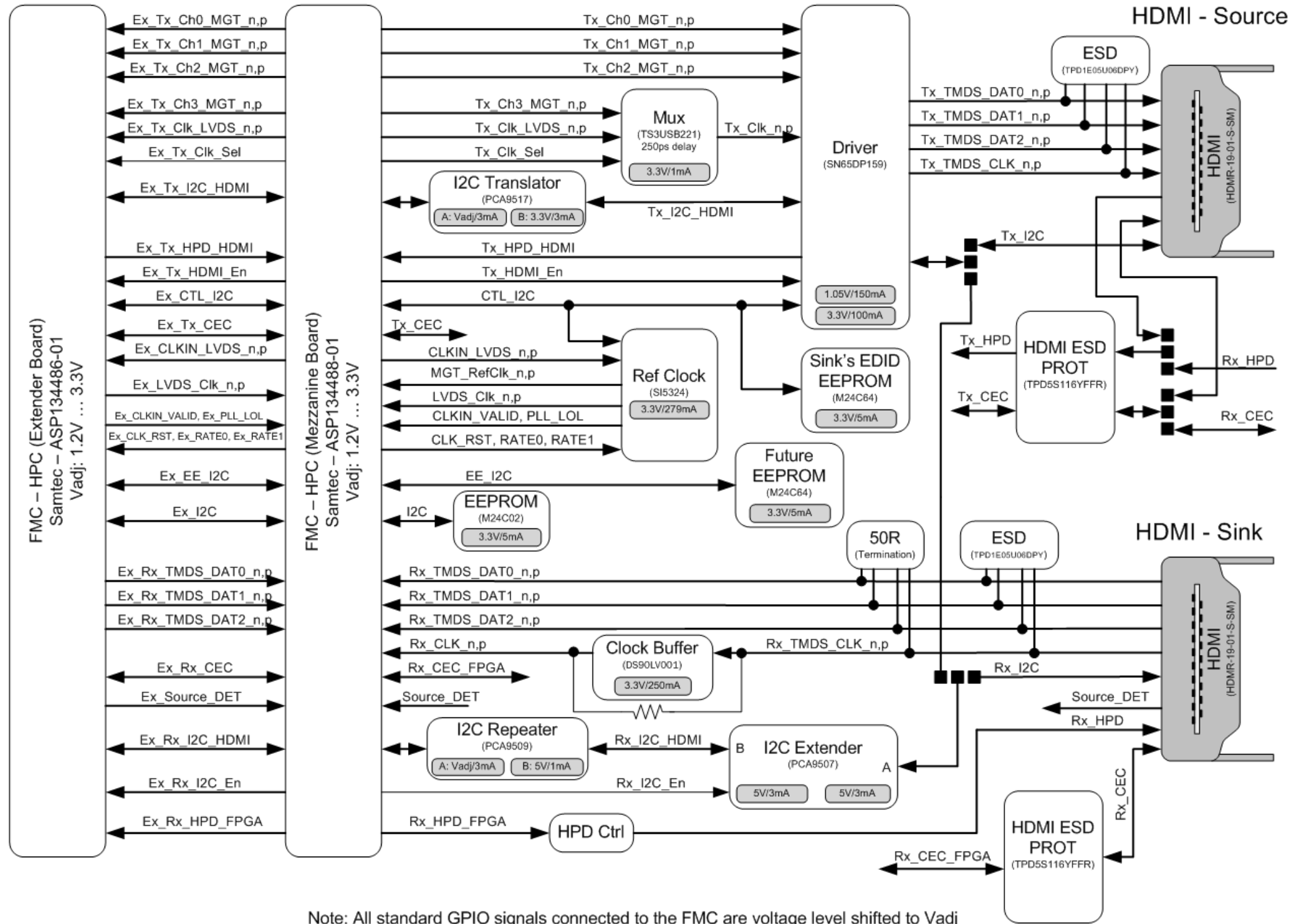
REVISION	DATE	CHANGE DETAILS
2.0	August 10, 2015	Implemented ECO0026. Release.
2.1	January 4, 2016	Implemented ECO0032 (change RSADJ from 4.7k to 6.49k). Release.

NOTES:
1. DNS ANNOTATION = DO NOT STUFF

FIDUS CONFIDENTIAL

PROJECT NAME	ZETTON HDMI	 Fidus Systems 375 Terry Fox Drive, Ottawa, ON K2K 0J8
DESIGN	Fred Huang	TITLE FACEMASK FMC HDMI 2.0
DRAWN	Fred Huang	SUBTITLE Table of Contents and Revision History
CHECK	RvR	DRAWING NUMBER SK-10077-01
		REVISION 2.1
		RELEASE DATE 4 January 2016
		SHEET 1 OF 8

Block Diagram



Note: All standard GPIO signals connected to the FMC are voltage level shifted to Vadj
 Note: All high-speed signals will be AC coupled

FIDUS CONFIDENTIAL

PROJECT NAME	ZETTON HDMI	Fidus Systems	375 Terry Fox Drive, Ottawa, ON K2K 0J8
DESIGN	Fred Huang	TITLE	FACEMASK FMC HDMI 2.0
DRAWN	Fred Huang	SUBTITLE	Block Diagram
CHECK	RvR	DRAWING NUMBER	SK-10077-01
		RELEASE DATE	4 January 2016
		REVISION	2.1
		SHEET	2 OF 8

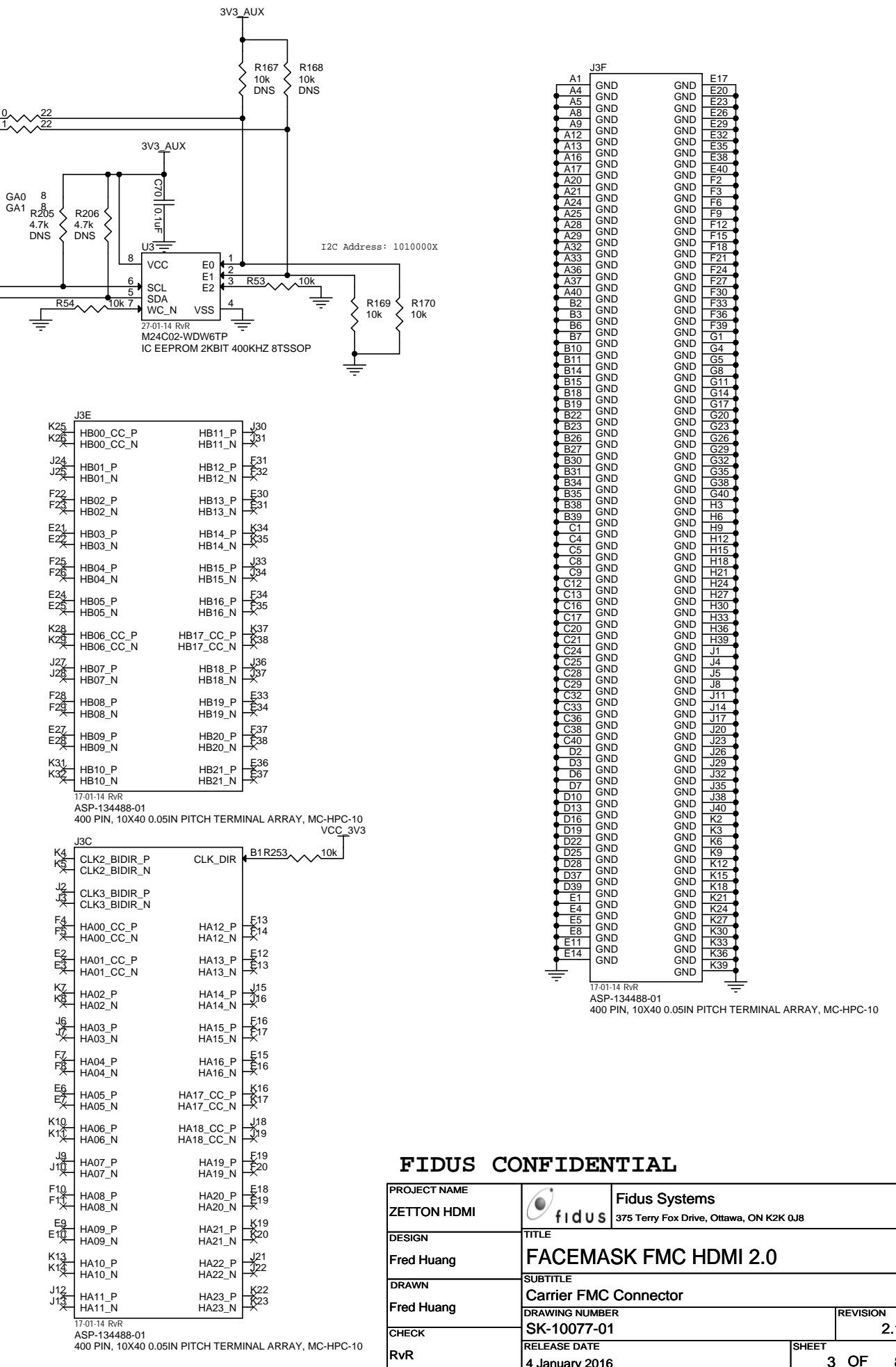
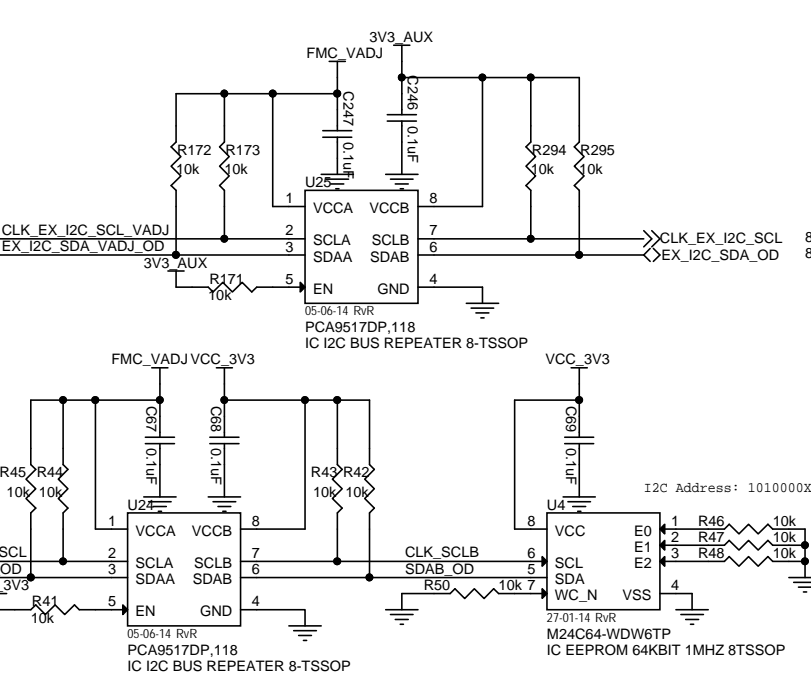
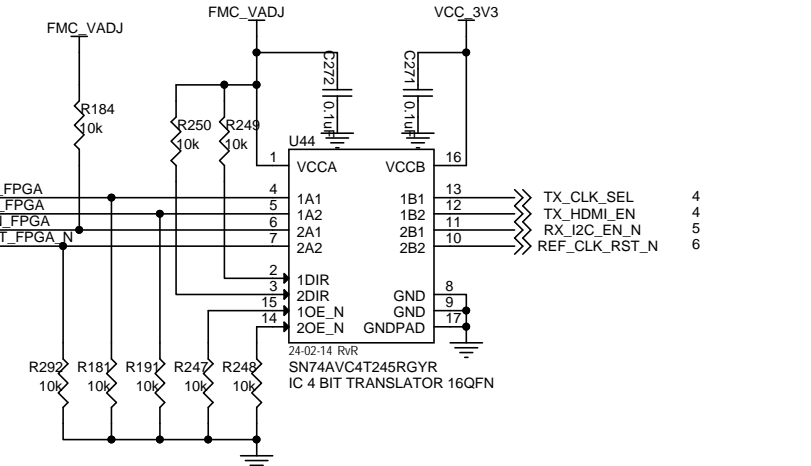
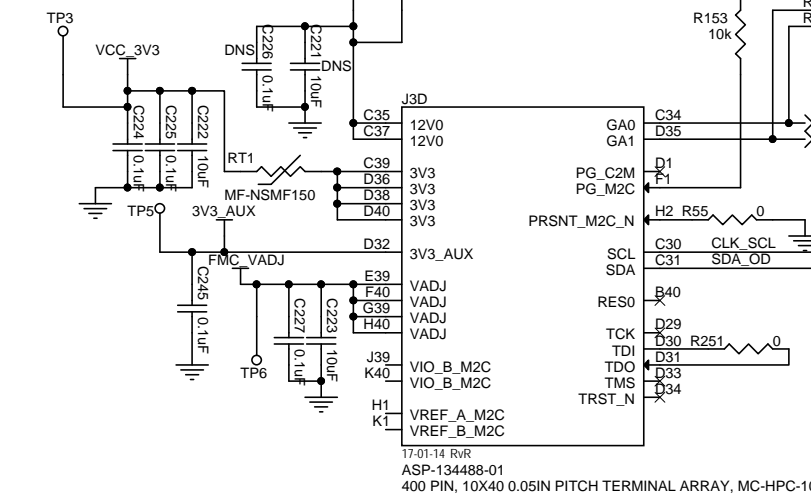
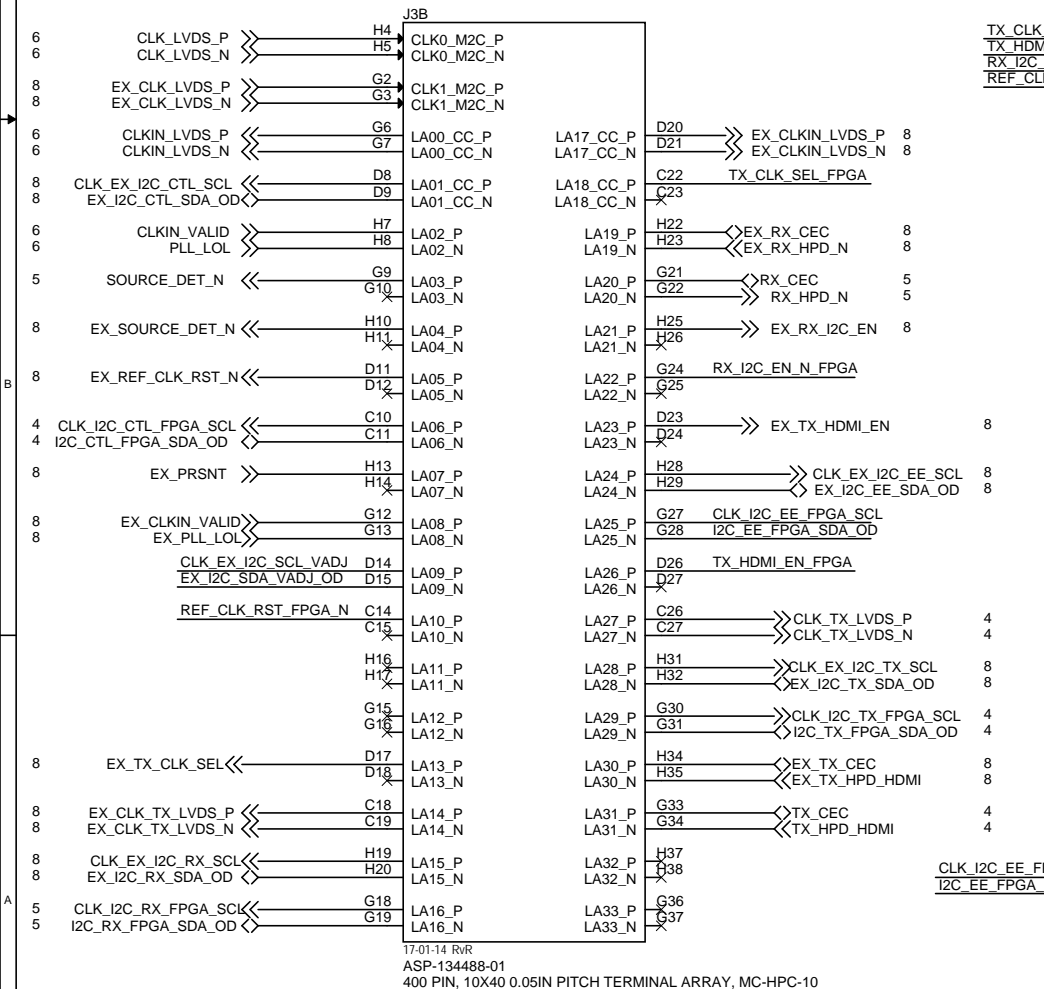
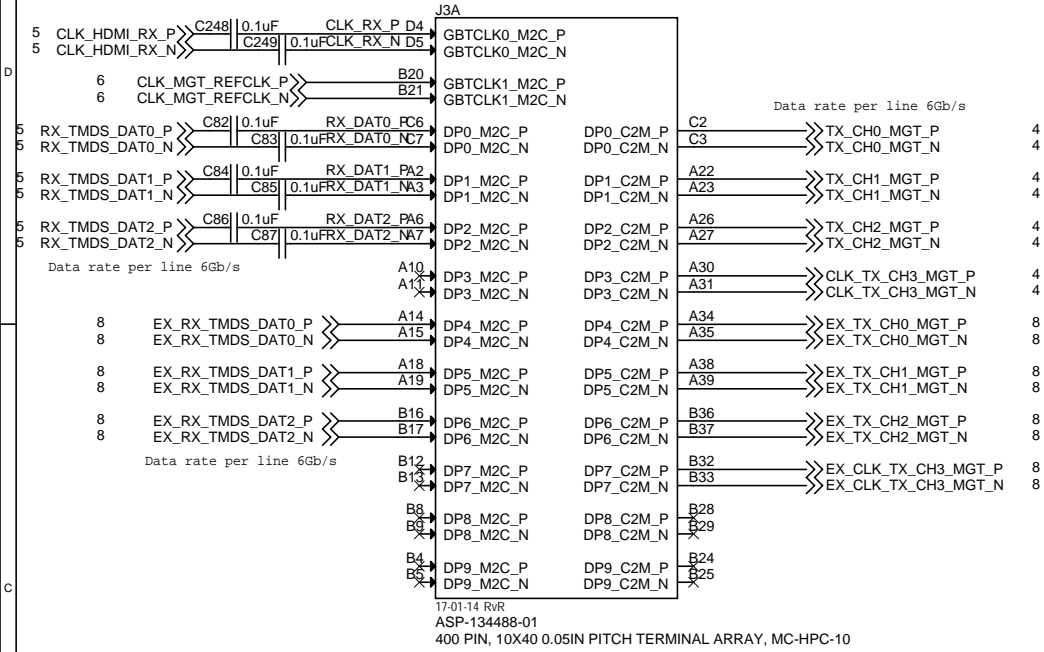
Carrier FMC Connector

ALL DIFF PAIRS ARE 100 OHM DIFF IMPEDANCE

Place AC coupling caps close to J3

Test Points close to respective decoupling caps

0mA max current draw on 12V
600mA max current draw on VCC_3V3
3mA max current draw on 3V3_AUX



FIDUS CONFIDENTIAL

PROJECT NAME	ZETTON HDMI	Fidus Systems	375 Terry Fox Drive, Ottawa, ON K2K 0J8
DESIGN	Fred Huang	TITLE	FACEMASK FMC HDMI 2.0
DRAWN	Fred Huang	SUBTITLE	Carrier FMC Connector
CHECK	RvR	DRAWING NUMBER	SK-10077-01
		RELEASE DATE	4 January 2016
		REVISION	2.1
		SHEET	3 OF 8

HDMI Source

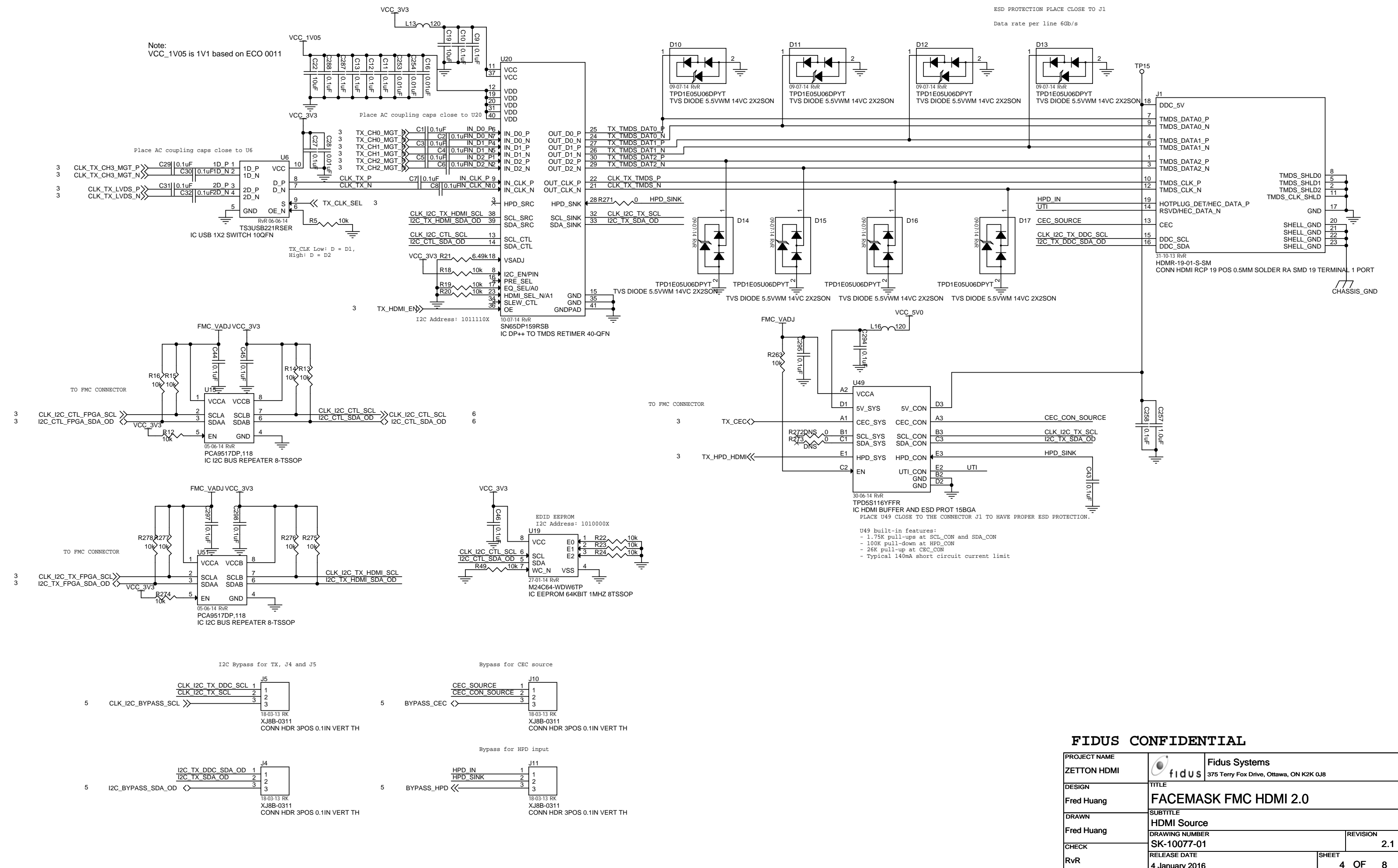
ALL DIFF PAIRS ARE 100 OHM DIFF IMPEDANCE

ESD PROTECTION PLACE CLOSE TO J1
Data rate per line 6Gb/s

Note:
VCC_1V05 is 1V1 based on ECO 0011

Place AC coupling caps close to U20

Place AC coupling caps close to U6



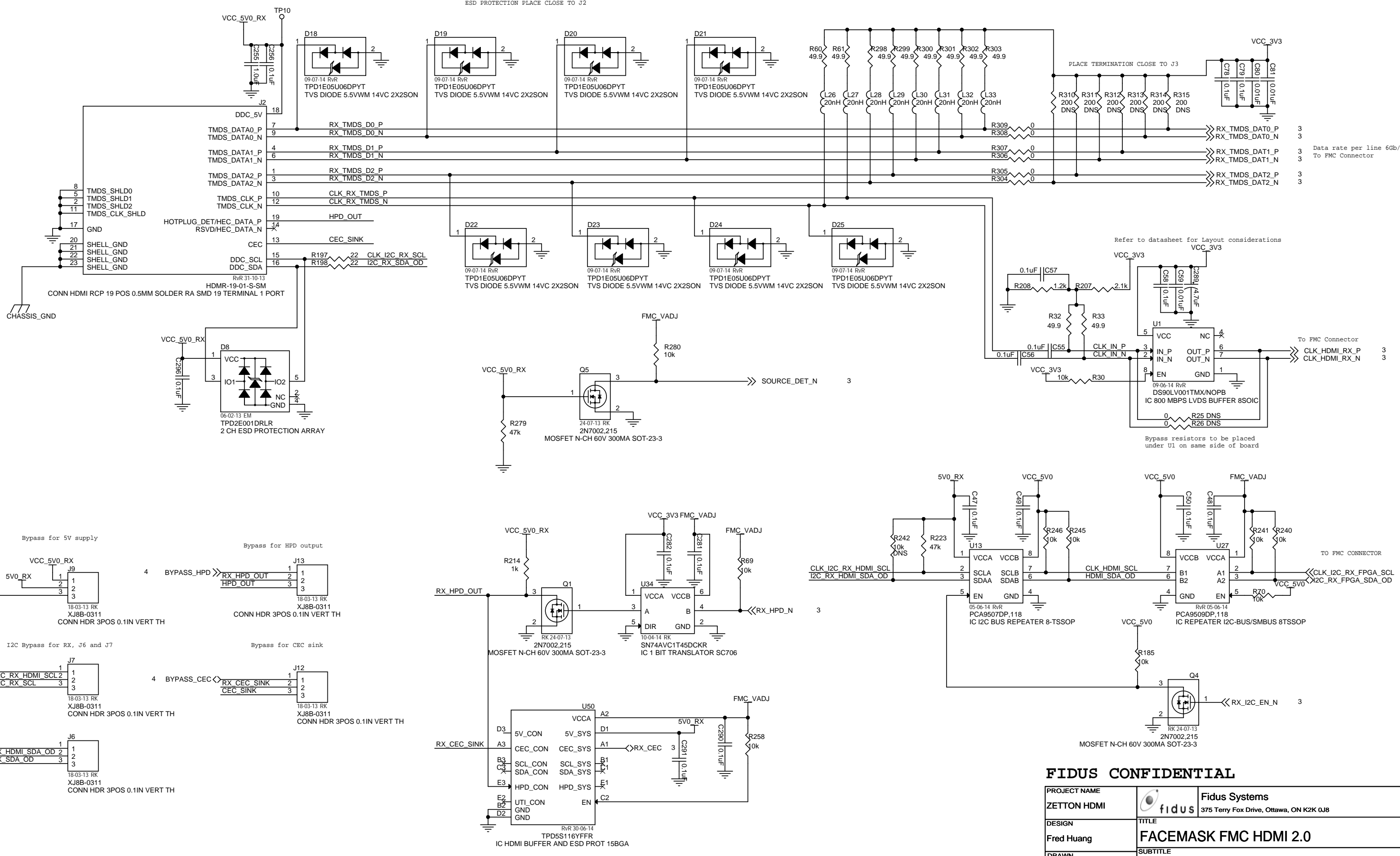
FIDUS CONFIDENTIAL		
PROJECT NAME	ZETTON HDMI	Fidus Systems 375 Terry Fox Drive, Ottawa, ON K2K 0J8
DESIGN	Fred Huang	TITLE FACEMASK FMC HDMI 2.0
DRAWN	Fred Huang	SUBTITLE HDMI Source
CHECK	RvR	DRAWING NUMBER SK-10077-01
		REVISION 2.1
		RELEASE DATE 4 January 2016
		SHEET 4 OF 8

HDMI Sink

ALL DIFF PAIRS ARE 100 OHM DIFF IMPEDANCE

ESD PROTECTION PLACE CLOSE TO J2

PLACE TERMINATION CLOSE TO J3



Data rate per line 6Gb/s
To FMC Connector

To FMC Connector

Refer to datasheet for Layout considerations

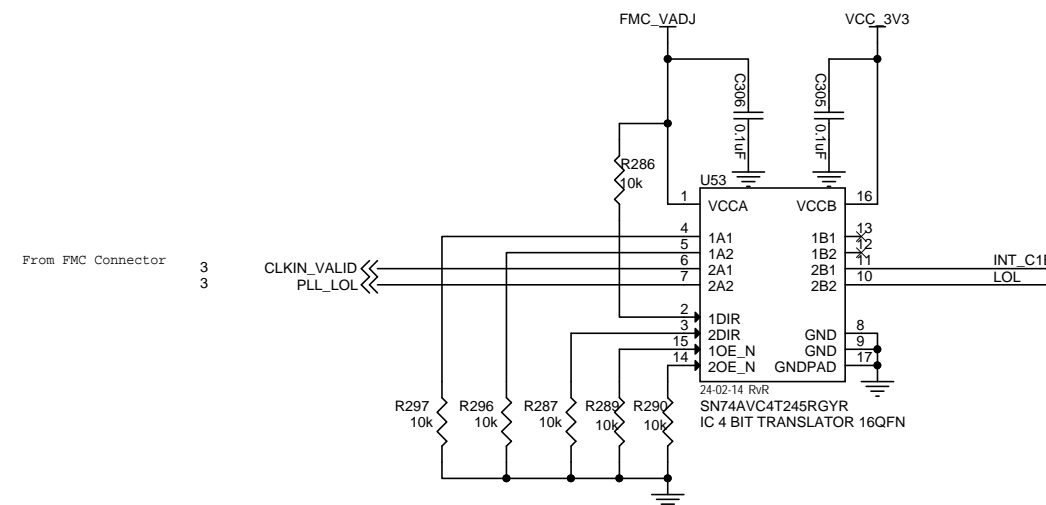
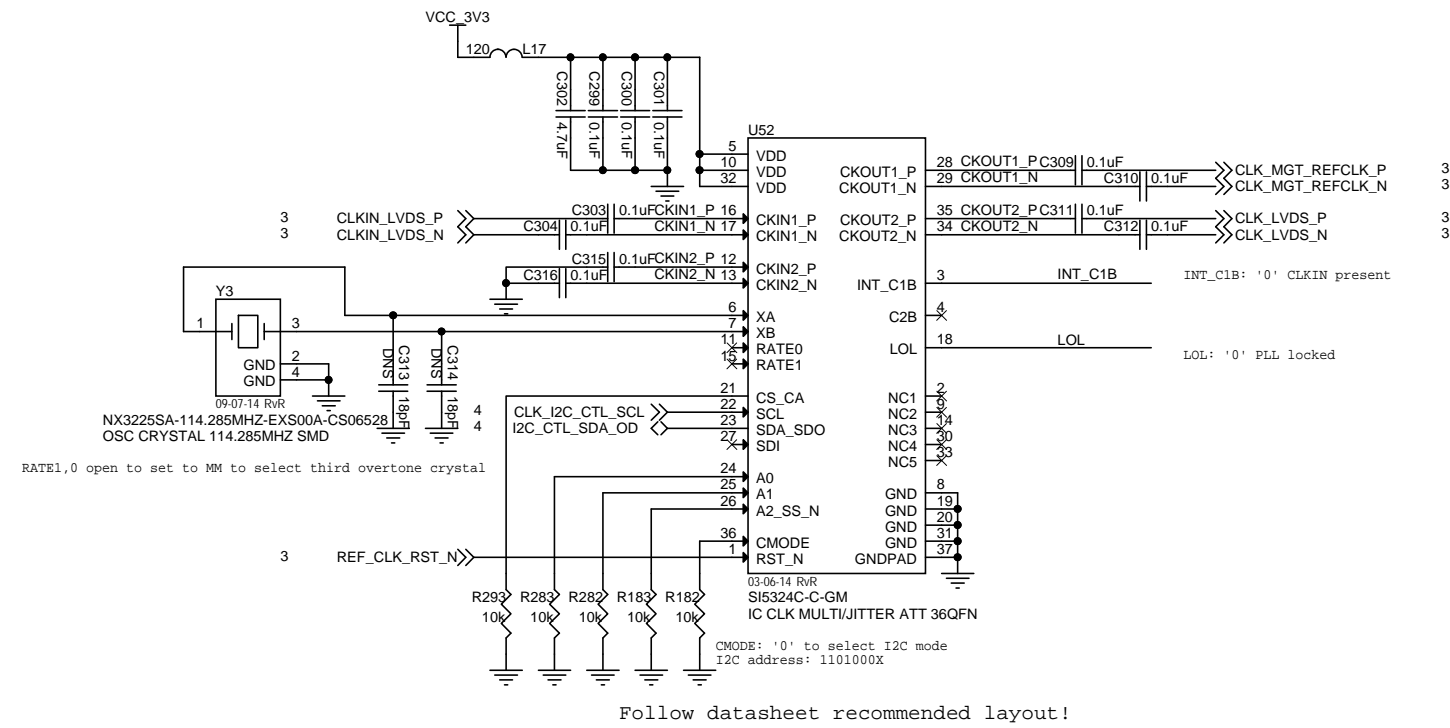
Bypass resistors to be placed under U1 on same side of board

To FMC CONNECTOR


FIDUS CONFIDENTIAL

PROJECT NAME	ZETTON HDMI	Fidus Systems 375 Terry Fox Drive, Ottawa, ON K2K 0J8
DESIGN	Fred Huang	
TITLE	FACEMASK FMC HDMI 2.0	
SUBTITLE	HDMI Sink	
DRAWING NUMBER	SK-10077-01	REVISION
RELEASE DATE	4 January 2016	2.1
SHEET	5 OF 8	

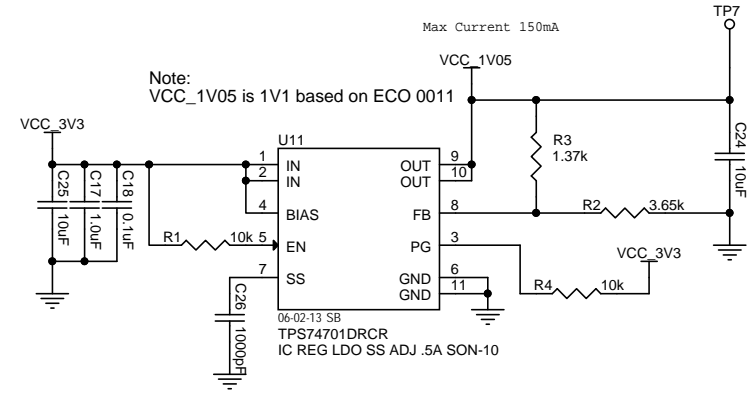
Clock Generator



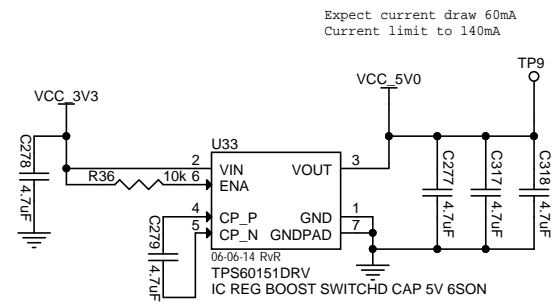
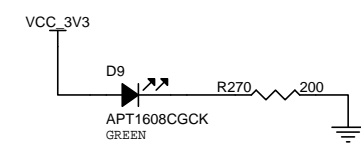
FIDUS CONFIDENTIAL

PROJECT NAME	ZETTON HDMI		Fidus Systems 375 Terry Fox Drive, Ottawa, ON K2K 0J8
DESIGN	Fred Huang	TITLE FACEMASK FMC HDMI 2.0	
DRAWN	Fred Huang	SUBTITLE Clock Generator	
CHECK	RvR	DRAWING NUMBER SK-10077-01	REVISION 2.1
		RELEASE DATE 4 January 2016	SHEET 6 OF 8

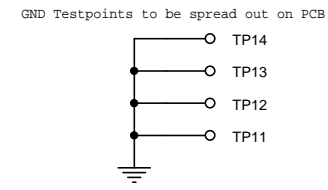
Power Supplies



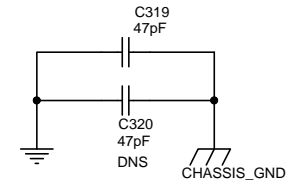
Consult the datasheet for layout requirements



Consult the datasheet for layout requirements

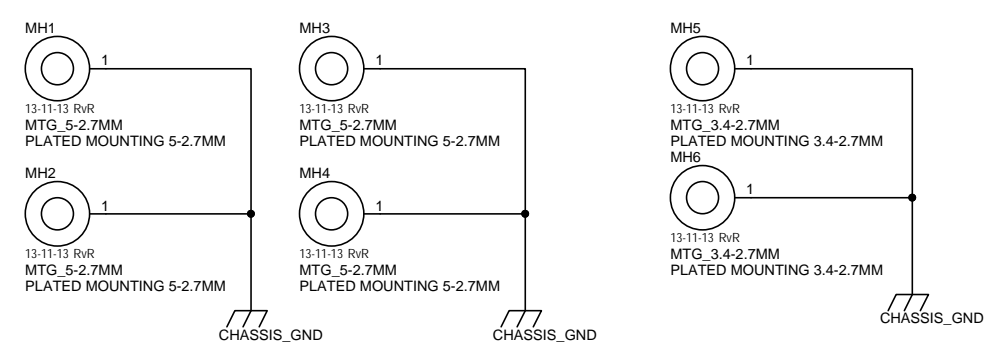


PLACE ONE AT EACH EDGE OF THE CARD



NEAR FMC CONNECTOR

FRONT PANEL BEZEL

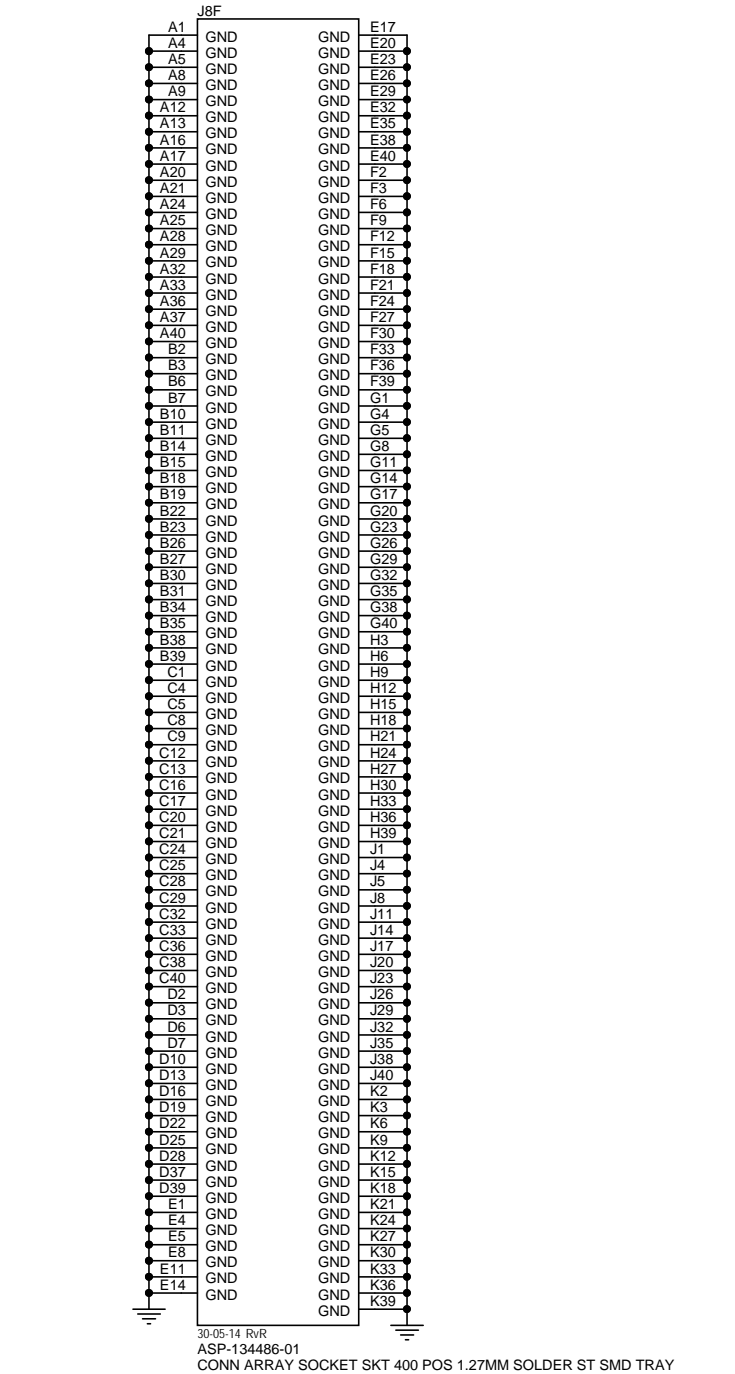
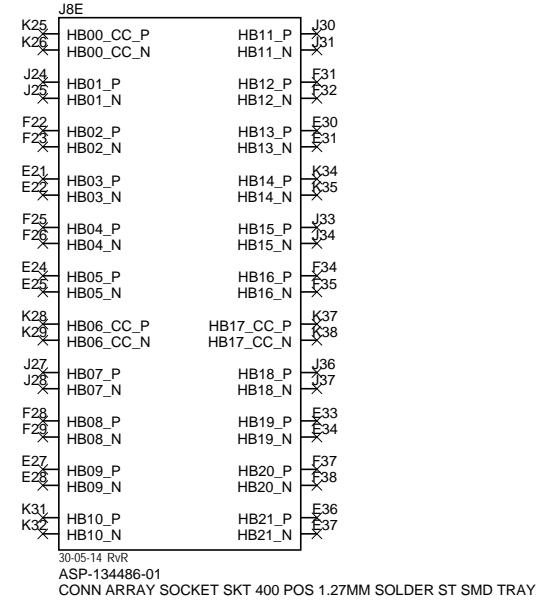
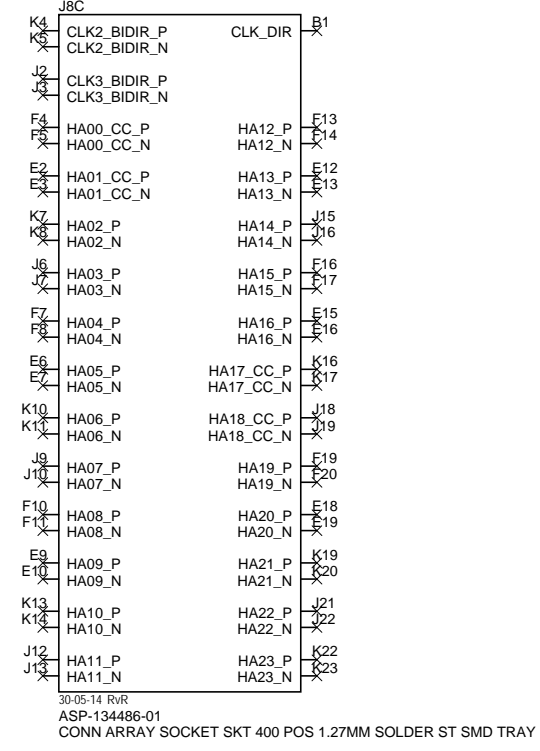
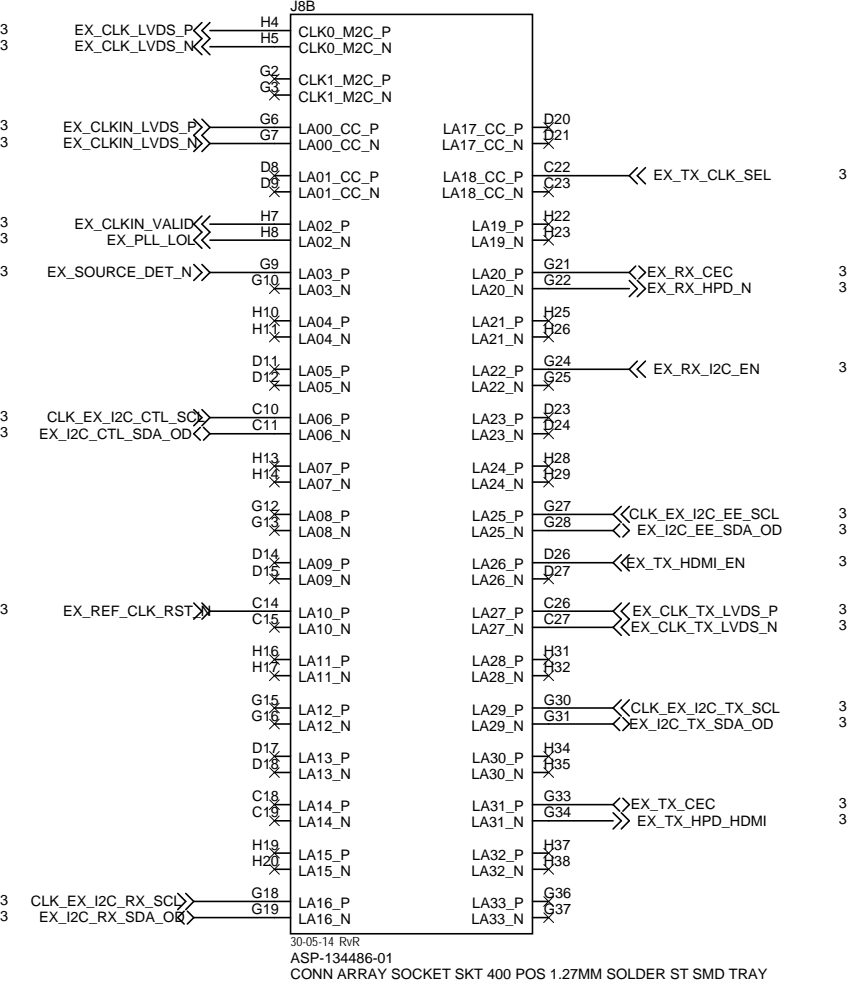
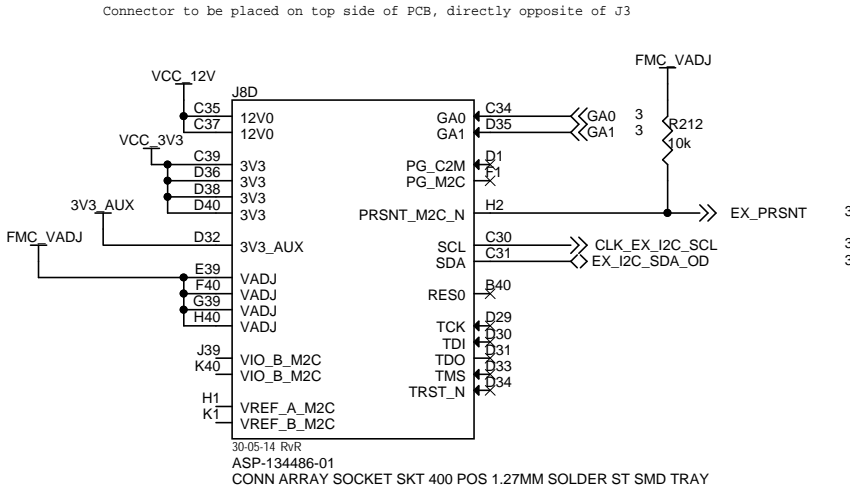
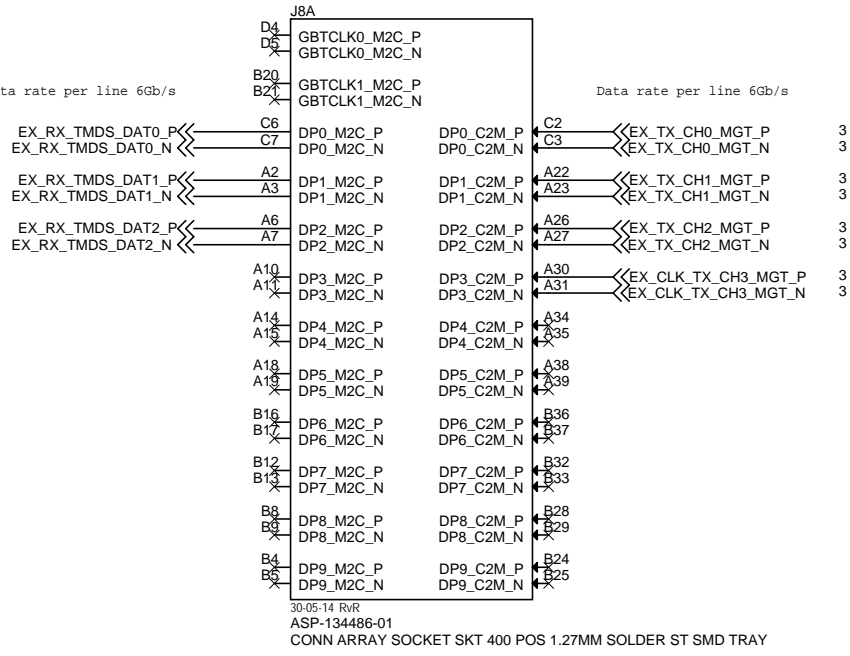


FIDUS CONFIDENTIAL

PROJECT NAME	ZETTON HDMI	fidus	Fidus Systems
DESIGN	Fred Huang	375 Terry Fox Drive, Ottawa, ON K2K 0J8	
DRAWN	Fred Huang	TITLE FACEMASK FMC HDMI 2.0	
CHECK	RvR	SUBTITLE Power Supplies	
		DRAWING NUMBER SK-10077-01	REVISION 2.1
		RELEASE DATE 4 January 2016	SHEET 7 OF 8

Extender FMC Connector

ALL DIFF PAIRS ARE 100 OHM DIFF IMPEDANCE



FIDUS CONFIDENTIAL

PROJECT NAME	ZETTON HDMI	Fidus Systems 375 Terry Fox Drive, Ottawa, ON K2K 0J8
DESIGN	Fred Huang	
DRAWN	Fred Huang	TITLE FACEMASK FMC HDMI 2.0
CHECK	RvR	SUBTITLE Extender FMC Connector
		DRAWING NUMBER SK-10077-01
		REVISION 2.1
		RELEASE DATE 4 January 2016
		SHEET 8 OF 8