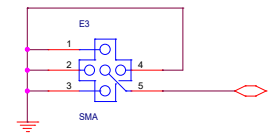
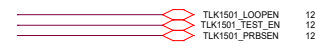
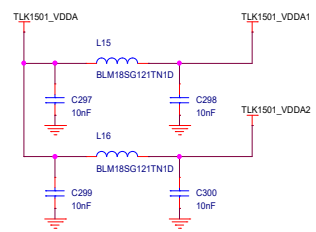
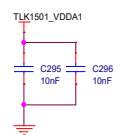
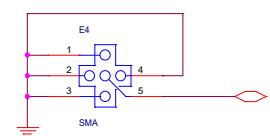


OutCML+	12
OutCML-	12
CCML+	9
CCML-	9
CDGND	2,3,4,5,6,7,8,9,10,11



OutCML+ 12



OutCML- 12

Loop enable (w/pulldown). When LOOPEN is active high, the internal loop-back path is activated. The transmitted serial data is directly routed internally to the inputs of the receiver. This provides a self-test capability in conjunction with the protocol device. The DOUTENP and DOUTTNI outputs are held in a high-impedance state during the loop-back test. LOOPEN is held low during standard operational state with external serial outputs and inputs active.

PRBS test enable (w/pulldown). When asserted high results of pseudorandom bit stream (PRBS) tests can be monitored on the RX\_ER/PRBS\_PAS3 terminal. A high on PRBS\_PAS3 indicates that valid PRBS is being received.

Test mode enable (w/pulldown). This terminal should be left unconnected or tied low