

Crystal Selection Guide

By Fredrik Kervel

Keywords

- *Crystal Oscillator*
- *802.15.4*
- *RF4CE*
- *BLE*
- *Frequency tuning*
- *FREQTUNE*
- *CC253x*
- *CC2540*

1 Introduction

RF systems are highly dependent on accurate clocks for correct operation. A deviation in clock frequency is directly reflected as a deviation in radio frequency. This can degrade RF performance, violate legal requirements or in worst case lead to a non-functioning system.

The scope of this application note is to give the design engineer a quick guide on how to design, tune and verify the clock circuit for TI's LPRF products.

A list of suggested crystals which can be used with CC253x and CC2540 is presented. The designer must pick a crystal which satisfies his/hers requirements on size, tolerance and temperature range.

If other crystals are to be used, fundamental mode, AT cut crystals is highly recommended due to accuracy and ease of use.

Application Note AN100

Table of Contents

KEYWORDS	1
1 INTRODUCTION	1
2 ABBREVIATIONS	2
3 CRYSTAL OSCILLATOR THEORY	3
3.1 OSCILLATOR OPERATION	3
3.2 CRYSTAL TOLERANCE.....	3
3.3 LOAD CAPACITANCE	4
3.4 R_s (ESR) AND NEGATIVE RESISTANCE	4
3.5 FREQTUNE REGISTER	5
4 SUGGESTED CRYSTALS	7
5 REFERENCES	9
6 GENERAL INFORMATION	10
6.1 DOCUMENT HISTORY	10

2 Abbreviations

EM	Evaluation module
IC	Integrated Circuit
ISM	Industrial, Scientific, Medical
LPRF	Low Power RF
ppm	Parts per Million (1×10^{-6})
RF	Radio Frequency
RF4CE	Radio Frequency for Consumer Electronics
SoC	System on Chip

3 Crystal Oscillator Theory

3.1 Oscillator Operation

The circuit used as high frequency, high accuracy clock source for TI's low power RF products is called a "Pierce Oscillator" and is shown in Figure 1. The oscillator circuit consists of an inverting amplifier (normally a regular inverter), a feedback resistor, two capacitors and a crystal. The first two components are internal in the IC while the capacitors and the crystal are external and must be selected for each separate design.

During normal operation, the crystal and the capacitors form a pi filter providing 180 degree phase shift to the internal amplifier, thus keeping the oscillator locked at the specified frequency.

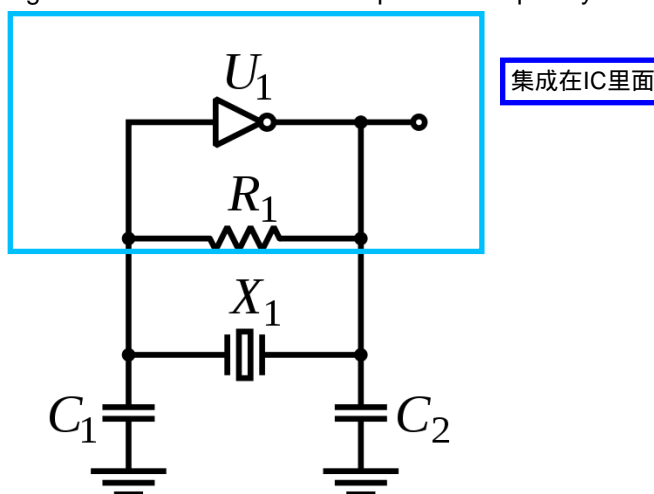


Figure 1, Pierce Oscillator

3.2 Crystal Tolerance

The total tolerance of a Crystal is dependent on three factors: production tolerance, temperature tolerance and age. All of these values are given in [ppm] (parts per million) and can be found in the manufacturers datasheet. To get the total maximum tolerance of a certain crystal all these factors must be accounted for.

Crystal frequency deviation is directly transferred to RF deviation, thus a deviation in the crystal oscillator frequency of X ppm leads a deviation in carrier frequency of X ppm. It is therefore important to select a crystal with performance within the limits of the RF specifications. Of course the end products expected age and operating conditions (temperature) must be taken into consideration.

For 802.15.4 (RF4CE) the max deviation in carrier frequency is limited to 40 ppm. [1]
For Bluetooth Low Energy the limit is 20 ppm. [2]

Application Note AN100

3.3 Load Capacitance

Correct operation of the crystal oscillator is dependent on the values of the two external capacitors, C_1 and C_2 in Figure 1. These capacitors together with any parasitic capacitance in the PCB and the crystal terminals compose the total load capacitance seen by the crystal. The optimum load capacitance for the crystal, C_L , is given in the crystal datasheet and C_1 and C_2 should thus be matched to this value according to the equation below:

$$C_L = \frac{C'_1 \cdot C'_2}{C'_1 + C'_2}$$

Where C'_x is the sum of the capacitance in C_x , the parasitic capacitance in the PCB trace and the capacitance in the terminal of the crystal. The sum of the two latter parts will typically be in the range of 2 – 8 pF.

The easiest way to find the optimum load capacitor values for a given circuit and layout is through experiments. The radio can be set to put out a constant carrier at a given frequency with SmartRF Studio. By measuring the output frequency with a Spectrum Analyzer the offset can easily be found.

3.4 R_S (ESR) and Negative Resistance

R_S or ESR (Equivalent Series Resistance) is a parameter of the crystal which can be found in the datasheet. Negative resistance is a parameter of the complete oscillator circuit, including capacitor values, crystal parameters and on-chip circuit. To ensure correct function of the crystal oscillator, Negative Resistance should be at least 5 times greater than R_S .

$$R_S < \frac{R_{neg}}{5}$$

If this is not true the oscillator might not operate as expected or it might not start up at all.

The negative resistance of the circuit can be found by introducing a resistor in series with the crystal. To avoid parasitic effects it is recommended to use a 0201 resistor for this task. The threshold of resistance where the oscillator is no longer able to start up is approximately the same as the circuit negative resistance. An example of resistance vs. startup time and negative resistance threshold is shown in Figure 2.

Note that higher load capacitor values decreases the negative resistance and thus rises the startup time.

Application Note AN100

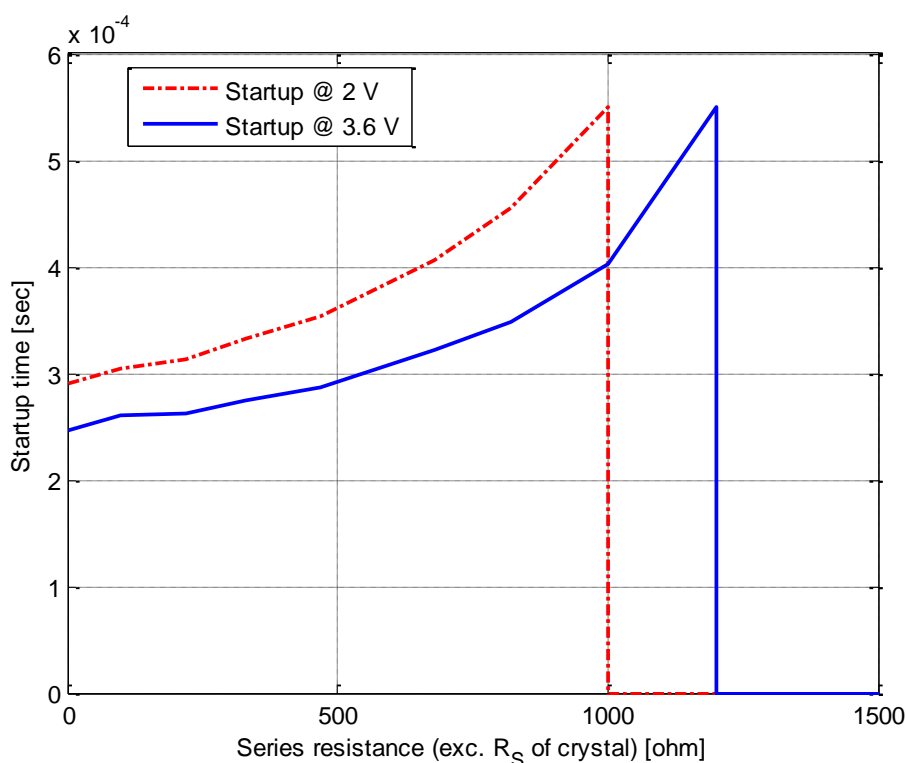


Figure 2, Startup time vs. added series resistance [FA-128 on CC2540EM]

3.5 FREQTUNE Register

芯片内部提供电容矫正偏移寄存器

The CC253x and CC2540 radios have the possibility to add extra load capacitance on-chip for oscillator frequency tuning. The capacitance value is adjusted by the 4 last bits (3:0) of the 'FREQTUNE'-register. The default value of the register is 0x0F which corresponds to no added capacitance. For each decrement in the register value extra capacitance is added to the oscillator circuit, thus reducing the oscillator frequency.

The level of tuning possible, also known as pullability, will differ from crystal to crystal as shown in Figure 3. Some manufacturers present this value in the datasheet given in ppm/pF.

Note that parameters as R_{neg} and startup time are dependent on the load capacitance, so changing FREQTUNE value also changes these parameters. Figure 4 shows how startup time will vary with added load capacitance.

In both Figure 3 and Figure 4 the load capacitance is tuned such that FREQTUNE = 0x0F corresponds to approximately 0 ppm offset from correct center frequency.

Application Note AN100

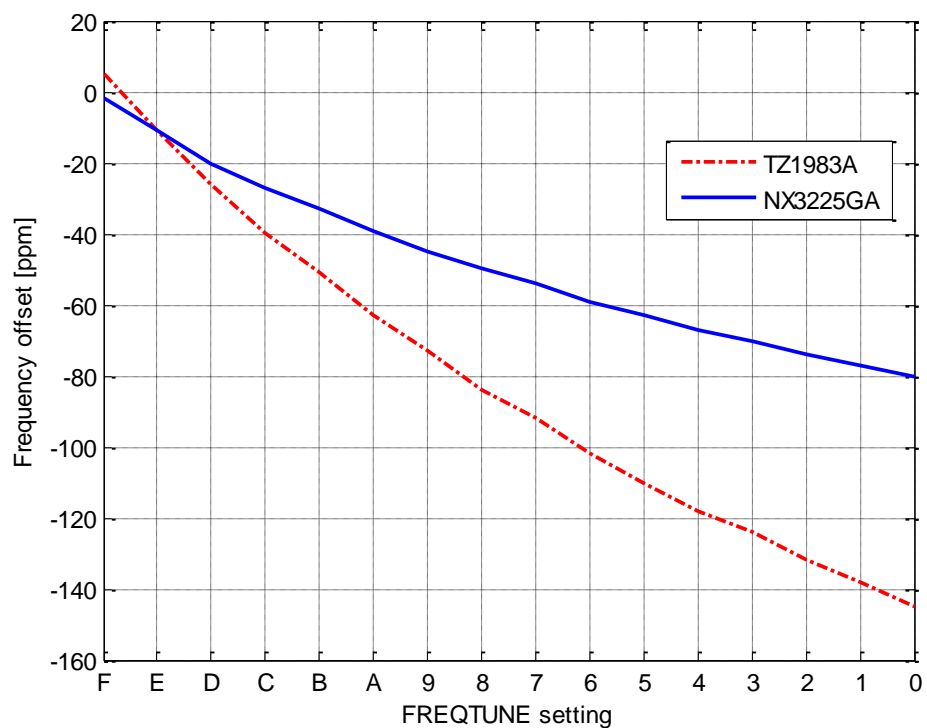


Figure 3, FREQTUNE pullability example

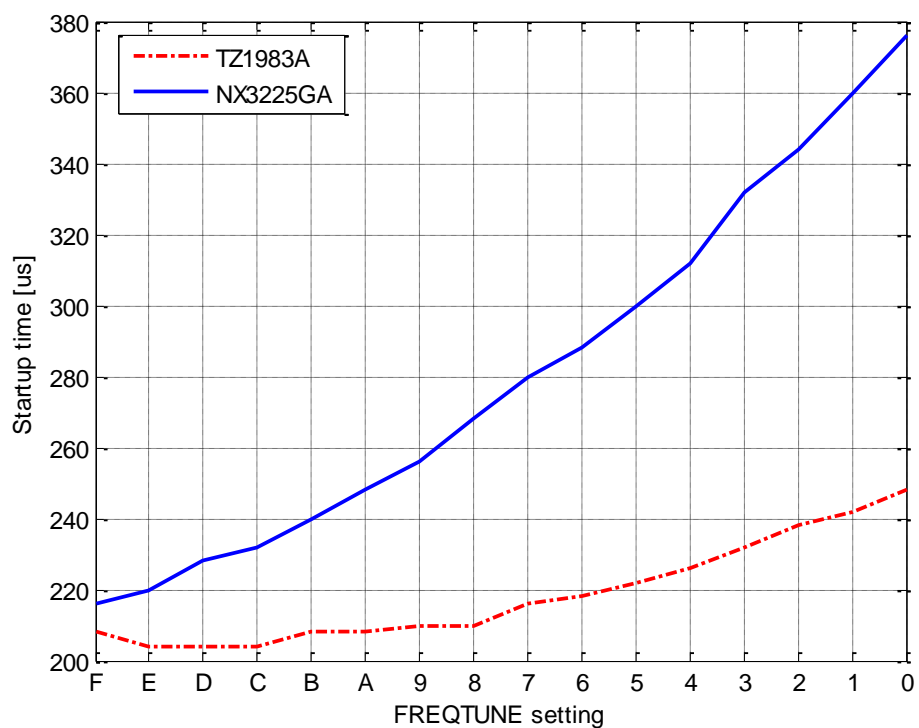


Figure 4, Startup time vs. FREQTUNE setting

Application Note AN100

4 Selecting Crystals

In the tables below some suggested crystals are presented. These crystals are tested with the CC2540 on the two EM boards “CC2540EM Crystal Eval” and “CC2540EM HC49smd Eval”. The first board has footprints for crystals varying in size from 2016 through 4025 while the latter board has footprint for HC49smd crystals.

Although the tests have been performed with CC2540, the crystals will have similar performance on any CC253x device as well.

In Table 1 the crystals are listed with their key datasheet values. Table 2 contains data measured on TIs EVMs.

Note that measured data will differ from board to board as a result of layout and PCB characteristics. The capacitor values presented are valid for the TI crystal evaluation boards, other values might be needed on other boards.

Selecting crystals for a specific application will often be dependent on three factors, size (footprint area, height), performance (accuracy over temperature, lifetime) and cost, i.e. higher performance and smaller package = higher price.

Application Note AN100

Table 1, Datasheet Values

Manufacturer	MPN	Package	ESR [ohm]	CL [pF]	freq [MHz]	Tol. [ppm]	Temp.tol. [ppm]	Aging [ppm/year]	Temp. Range [deg C]
Epson Toyocom	FA-128	2016	60	10	32	10	10	5	85 -40
Epson Toyocom	FA-20H	2520	60	10	32	10	10	3	85 -40
NDK	NX3225GA	3225	50	12	32	20	30		85 -40
NDK	NX3225JA	3225	60	10	32	20	20		70 0
Tai-Saw Technology	TZ1983A	HC49smd	50	10	32	10	20	1	70 0

Table 2, Measurements on TI EM @25 deg.C

MPN	C231	C221	Startup time		Neg. Resistance	FREQTUNE pullability
			2V	3V		
FA-128	12pF	12pF	290 us	251 us	1kohm	-54 ppm
FA-20H	12pF	12pF	408 us	352 us		-35 ppm
NX3225GA	12pF	15pF	236 us	216 us	820 > Rneg > 680	-78 ppm
TZ1983A	10pF	12PF	228 us	208 us		-150 ppm

Application Note AN100

5 References

- [1] 802.15.4-2006 ([IEEE download](#))
- [2] 802.15.1-2005 ([IEEE download](#))

Application Note AN100

6 General Information

6.1 Document History

Revision	Date	Description/Changes
SWRA372	2011.06.27	Initial release.
SWRA372A	2011.10.28	Added NX3225JA

IMPORTANT NOTICE

Texas Instruments Incorporated and its subsidiaries (TI) reserve the right to make corrections, modifications, enhancements, improvements, and other changes to its products and services at any time and to discontinue any product or service without notice. Customers should obtain the latest relevant information before placing orders and should verify that such information is current and complete. All products are sold subject to TI's terms and conditions of sale supplied at the time of order acknowledgment.

TI warrants performance of its hardware products to the specifications applicable at the time of sale in accordance with TI's standard warranty. Testing and other quality control techniques are used to the extent TI deems necessary to support this warranty. Except where mandated by government requirements, testing of all parameters of each product is not necessarily performed.

TI assumes no liability for applications assistance or customer product design. Customers are responsible for their products and applications using TI components. To minimize the risks associated with customer products and applications, customers should provide adequate design and operating safeguards.

TI does not warrant or represent that any license, either express or implied, is granted under any TI patent right, copyright, mask work right, or other TI intellectual property right relating to any combination, machine, or process in which TI products or services are used. Information published by TI regarding third-party products or services does not constitute a license from TI to use such products or services or a warranty or endorsement thereof. Use of such information may require a license from a third party under the patents or other intellectual property of the third party, or a license from TI under the patents or other intellectual property of TI.

Reproduction of TI information in TI data books or data sheets is permissible only if reproduction is without alteration and is accompanied by all associated warranties, conditions, limitations, and notices. Reproduction of this information with alteration is an unfair and deceptive business practice. TI is not responsible or liable for such altered documentation. Information of third parties may be subject to additional restrictions.

Resale of TI products or services with statements different from or beyond the parameters stated by TI for that product or service voids all express and any implied warranties for the associated TI product or service and is an unfair and deceptive business practice. TI is not responsible or liable for any such statements.

TI products are not authorized for use in safety-critical applications (such as life support) where a failure of the TI product would reasonably be expected to cause severe personal injury or death, unless officers of the parties have executed an agreement specifically governing such use. Buyers represent that they have all necessary expertise in the safety and regulatory ramifications of their applications, and acknowledge and agree that they are solely responsible for all legal, regulatory and safety-related requirements concerning their products and any use of TI products in such safety-critical applications, notwithstanding any applications-related information or support that may be provided by TI. Further, Buyers must fully indemnify TI and its representatives against any damages arising out of the use of TI products in such safety-critical applications.

TI products are neither designed nor intended for use in military/aerospace applications or environments unless the TI products are specifically designated by TI as military-grade or "enhanced plastic." Only products designated by TI as military-grade meet military specifications. Buyers acknowledge and agree that any such use of TI products which TI has not designated as military-grade is solely at the Buyer's risk, and that they are solely responsible for compliance with all legal and regulatory requirements in connection with such use.

TI products are neither designed nor intended for use in automotive applications or environments unless the specific TI products are designated by TI as compliant with ISO/TS 16949 requirements. Buyers acknowledge and agree that, if they use any non-designated products in automotive applications, TI will not be responsible for any failure to meet such requirements.

Following are URLs where you can obtain information on other Texas Instruments products and application solutions:

Products

Audio	www.ti.com/audio
Amplifiers	amplifier.ti.com
Data Converters	dataconverter.ti.com
DLP® Products	www.dlp.com
DSP	dsp.ti.com
Clocks and Timers	www.ti.com/clocks
Interface	interface.ti.com
Logic	logic.ti.com
Power Mgmt	power.ti.com
Microcontrollers	microcontroller.ti.com
RFID	www.ti-rfid.com
OMAP Mobile Processors	www.ti.com/omap
Wireless Connectivity	www.ti.com/wirelessconnectivity

Applications

Automotive and Transportation	www.ti.com/automotive
Communications and Telecom	www.ti.com/communications
Computers and Peripherals	www.ti.com/computers
Consumer Electronics	www.ti.com/consumer-apps
Energy and Lighting	www.ti.com/energy
Industrial	www.ti.com/industrial
Medical	www.ti.com/medical
Security	www.ti.com/security
Space, Avionics and Defense	www.ti.com/space-avionics-defense
Video and Imaging	www.ti.com/video

TI E2E Community Home Page

e2e.ti.com

Mailing Address: Texas Instruments, Post Office Box 655303, Dallas, Texas 75265
Copyright © 2012, Texas Instruments Incorporated