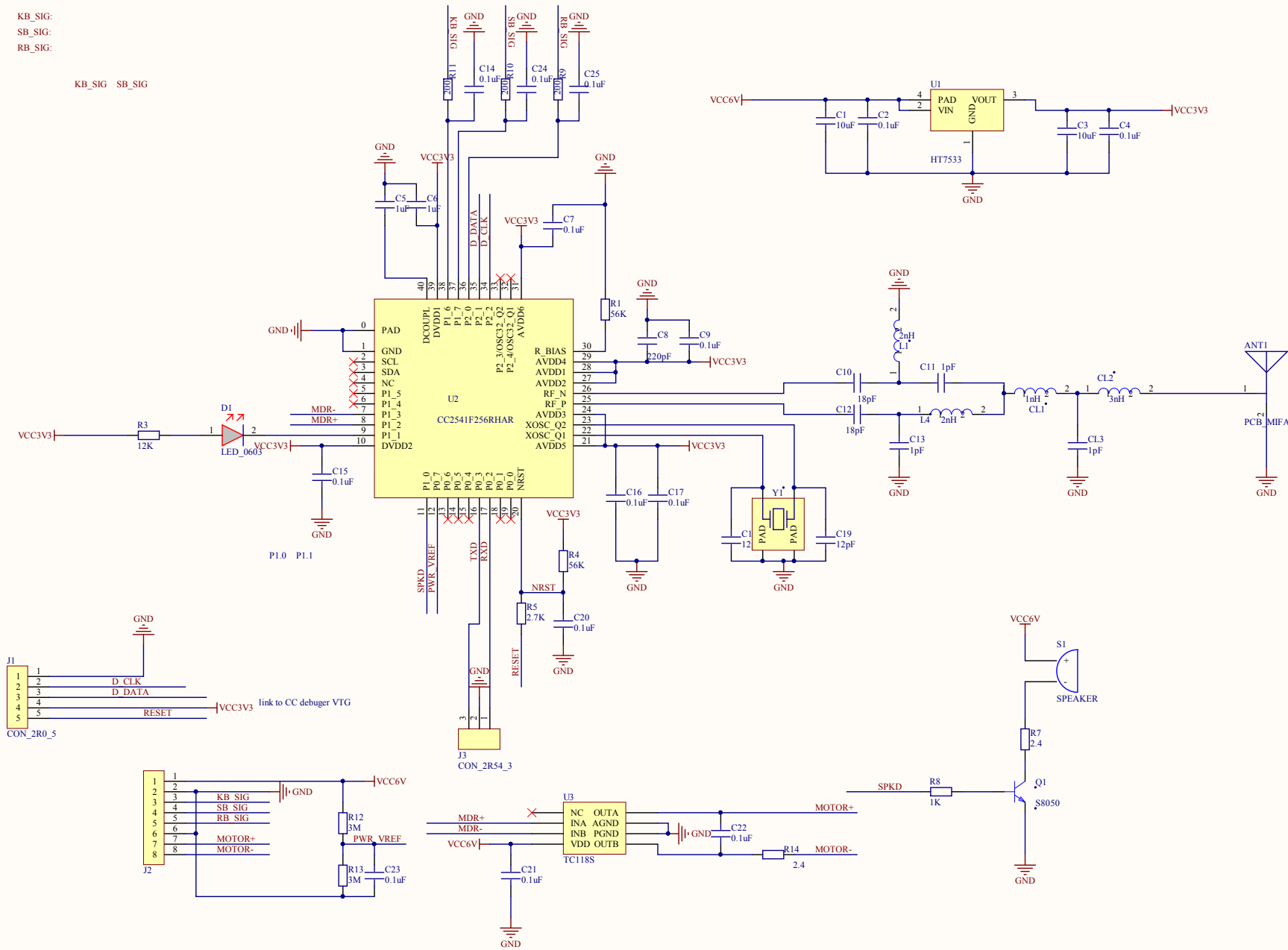


MR1
MR2

KB_SIG:
SB_SIG:
RB_SIG:

KB_SIG SB_SIG



Title		
Size	Number	Revision
A3		
Date:	2018/1/25	Sheet of
File:	E:\Altium Work\HF_BMLCB_SCH_V03	3/3
Author:		By:

Bill of Materials

<Parameter Title not found>

Source Data From: HF_BMLCB_V0.2.PrjPcb
 Project: HF_BMLCB_V0.2.PrjPcb
 Variant: None

Creation Date: 2018/1/25 8:12:56
 Print Date: 43125 43125.34237

Footprint	Comment	LibRef	Designator	Description	Quantity
PCB_MIFA_MLCB	PCB_MIFA	PCB_MIFA	ANT1		1
C0805	10uF	CapacitorL	C1, C3		2
C0603	0.1uF	CapacitorL	C2, C4, C7, C9, C14, C15, C16, C17, C21, C22, C23, C24, C25		14
C0603	1uF	CapacitorL	C5, C6		2
C0603	220pF	CapacitorL	C8		1
C0402	18pF	CapacitorL	C10, C12		2
C0402	1pF	CapacitorL	C11, C13, CL3		3
C0603	12pF	CapacitorL	C18, C19		2
L0402	1nH	INDUCTOR	CL1		1
L0402	3nH	INDUCTOR	CL2		1
LED_0603	LED_0603	LED_0603	D1		1
SIP5_2R00	CON_2R0_5	CON_2R0_5	J1		1
SIP8_2.0	#NAME?	CON_2R0_8	J2		1
SIP_2R54_3	CON_2R54_3	CON_2R54_3	J3		1
L0402	2nH	INDUCTOR	L1, L4		2
MARK	Mark	Mark	MR1, MR2		2
SOT23	S8050	S8050	Q1		1
R0603	56K	ResistorL	R1, R4		2
R0603	12K	ResistorL	R3		1
R0603	2.7K	ResistorL	R5		1
R0603	2.4	ResistorL	R7, R14	2.4	2
R0603	1K	ResistorL	R8		1
R0603	200	ResistorL	R9, R10, R11		3
R0603	3M	ResistorL	R12, R13	3M	2
SPEAKER	SPEAKER	SPEAKER	S1	SPEAKER	1
SOT89N	HT7533	HT7533	U1	HT7533	1
CC2541_QFN40	CC2541F256RH	CC2541	U2		1
SOP8	TC118S	TC118S	U3	TC118S	1
XS-3225	CRYSTAL 8Mhz	CRYSTAL	Y1	32MHZ - 3225	1
					55

Approved	Notes