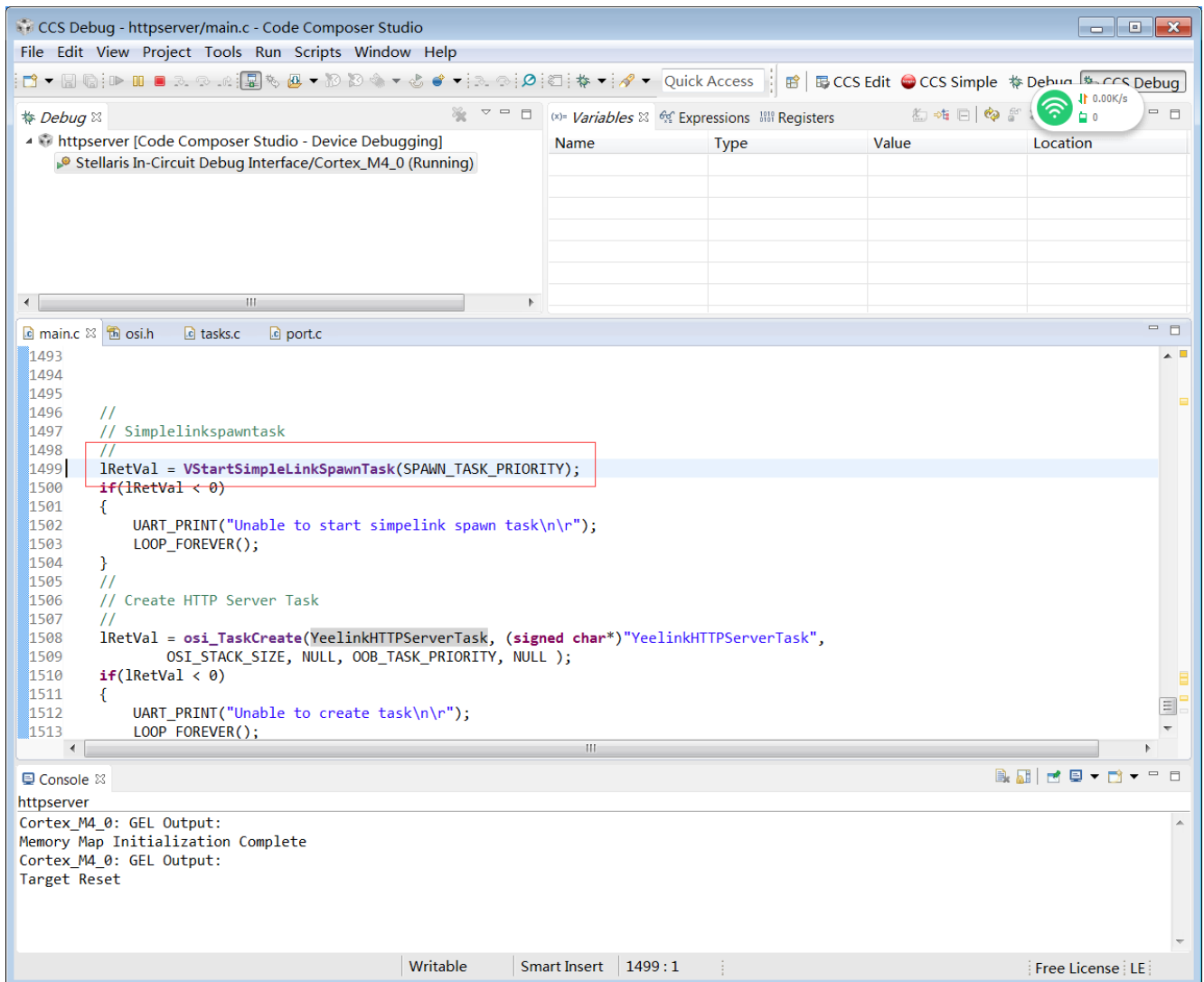


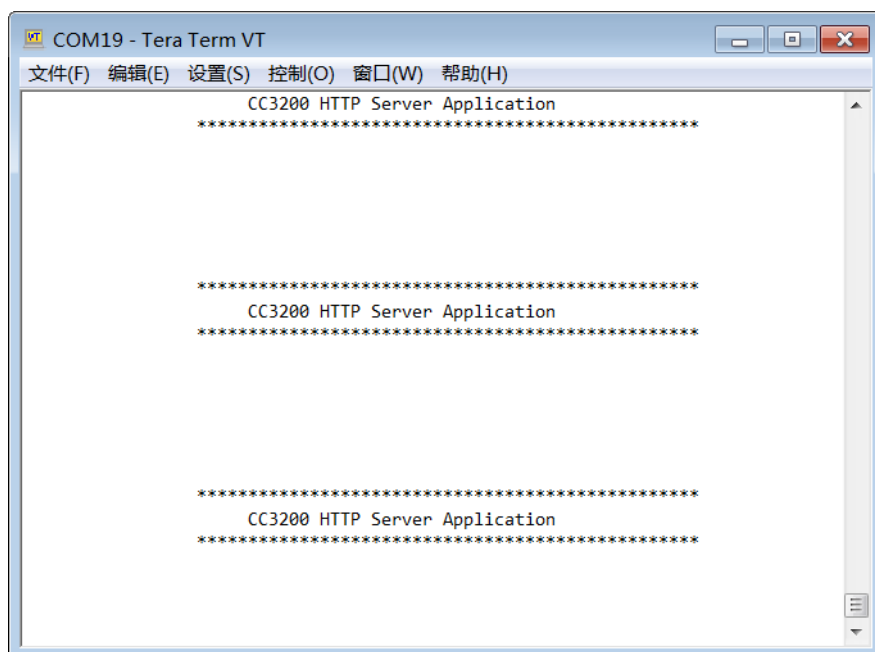
## CC3200连接Yeelink调试过程

1. 首先前几天已经对照网上的资料成功过但是今天在使用的时候还是有些错误
2. 遇到的错误

在串口上看到如下打印信息，在debug模式下发现进入

VStartSimpleLinkSpawnTask (SPAWN\_TASK\_PRIORITY);没反应





解决的办法:

于是按照书上教程重新构建 SDK驱动库,

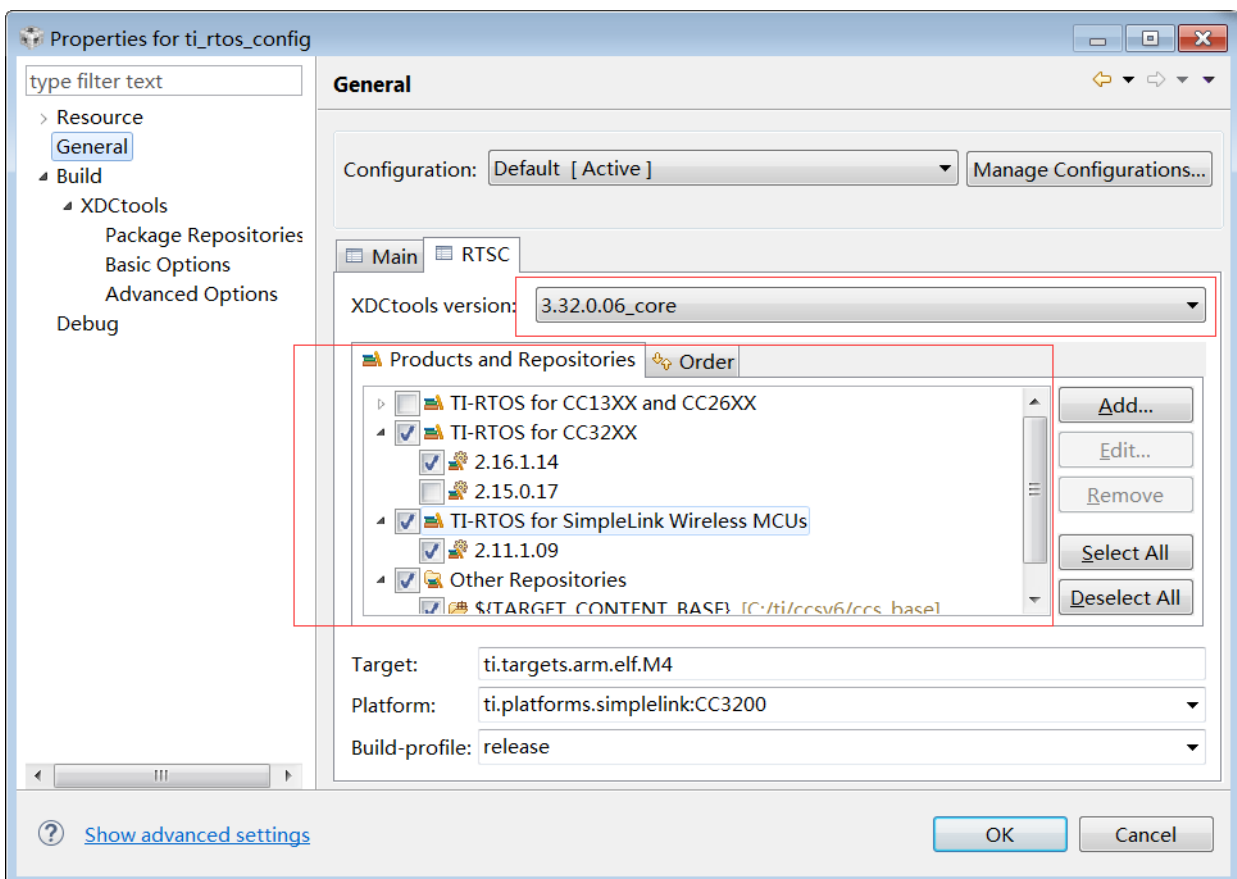
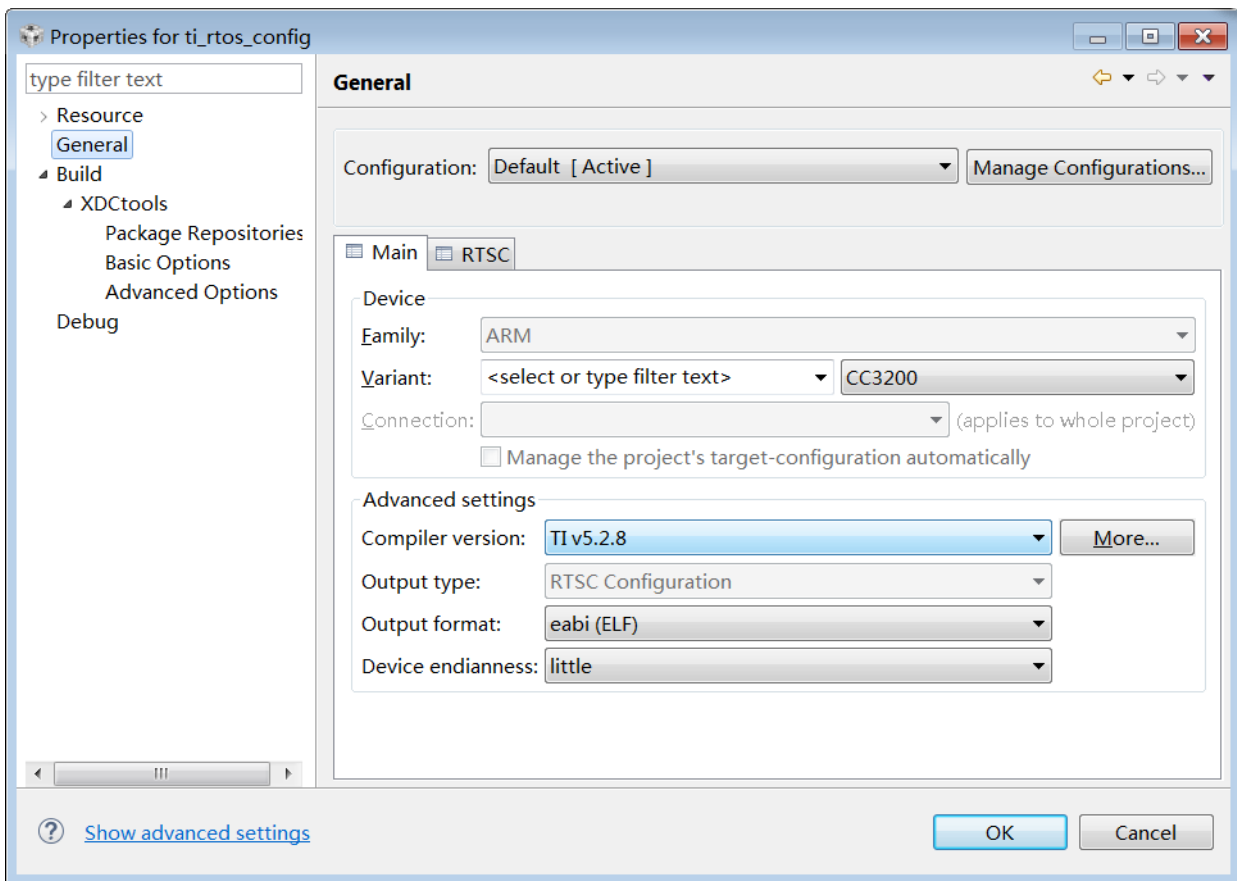
3) 在(项目浏览器)中的 driverlib项目,在弹出菜单中单击 “Build

4) 右击(4) 重复步骤(2)和步骤(3),用相同的方法重建 Simplelink  
 注意: Simplelink有4种配置( Configuration): NON OS、 NON OS PM、 OS和 mework,这4种配置需要分别进行设置和重建,参见步骤(6)。

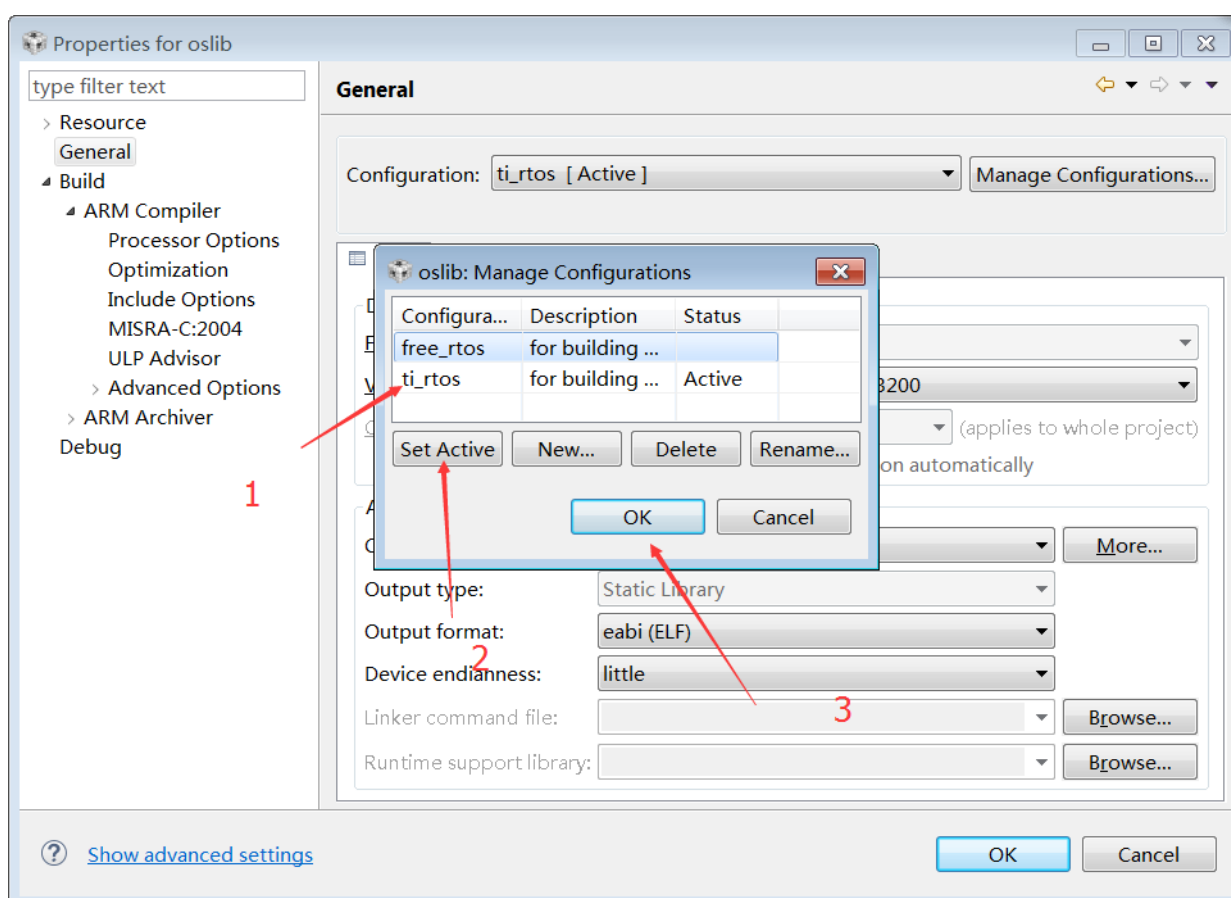
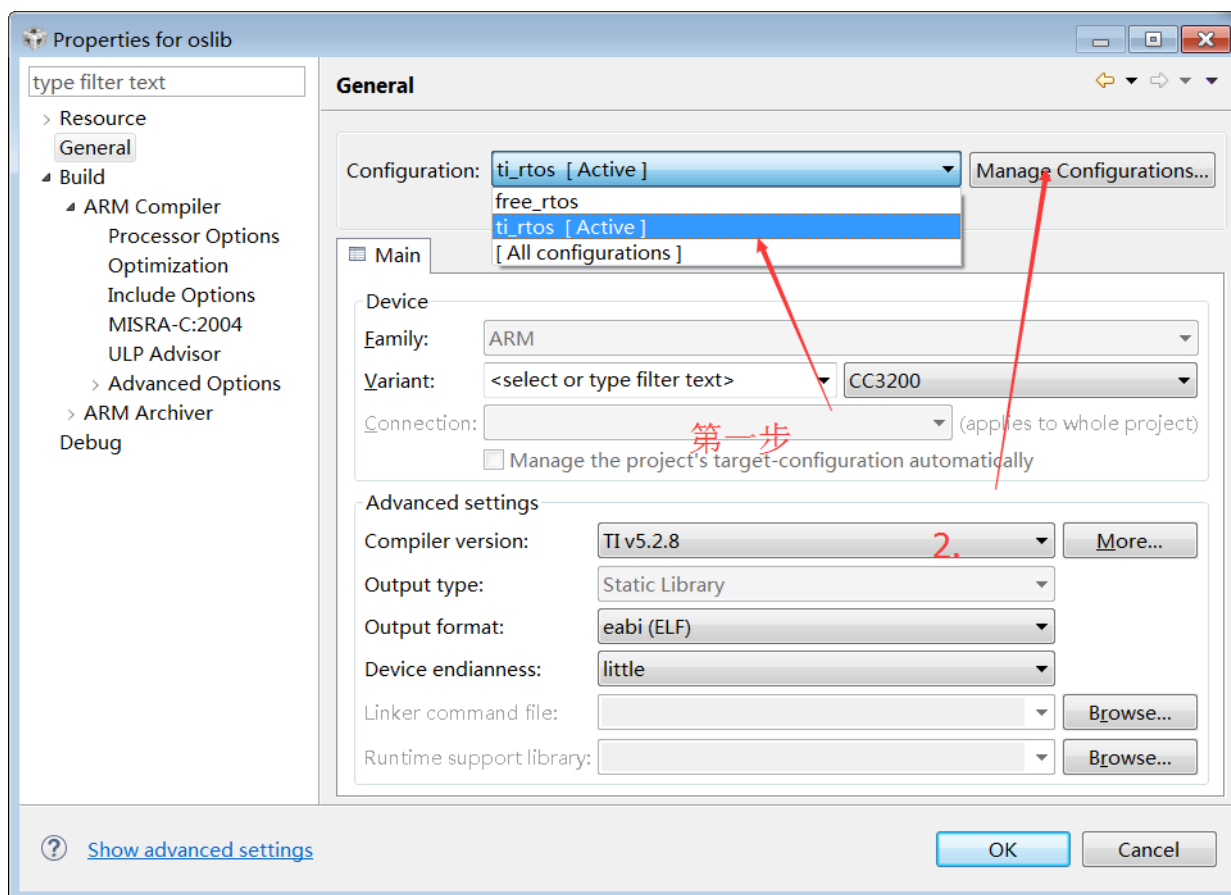
(5) 重建 t nos config项目时,除在“属性”对译器版本)为外,还需要在“RTSC”标签选择最新 Xdctools和TI-RTOS对话框  
 框“main”标签选择“ Compiler ver是(平台)为0时需先在性”对话框中择Cm置)为管理配置)按钮打开管理配置对话框进行配置管理,如所示,然后在“main”标签选择“ Compiler version”(编译器版本)为“T1v522”

注意:osib项目使用了 ti rtos config项目,因此必须先重建 tl rtos config项目

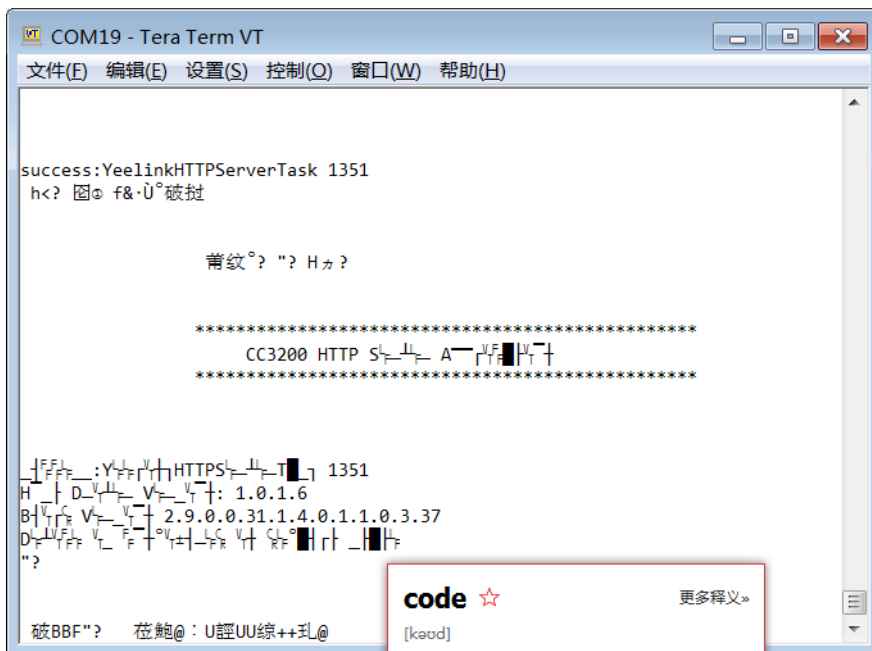
下图 重建 tl rtos config项目



重建 oslib 项目



然后我把SDK里面的HTTPSERVERS例程重新加载再然后替换mian的代码出现下面的错误



```
COM19 - Tera Term VT
文件(E) 编辑(E) 设置(S) 控制(Q) 窗口(W) 帮助(H)

success:YeelinkHTTPServerTask 1351
h<?  f&·U°破坏

    蒂纹°? "° Hカ?

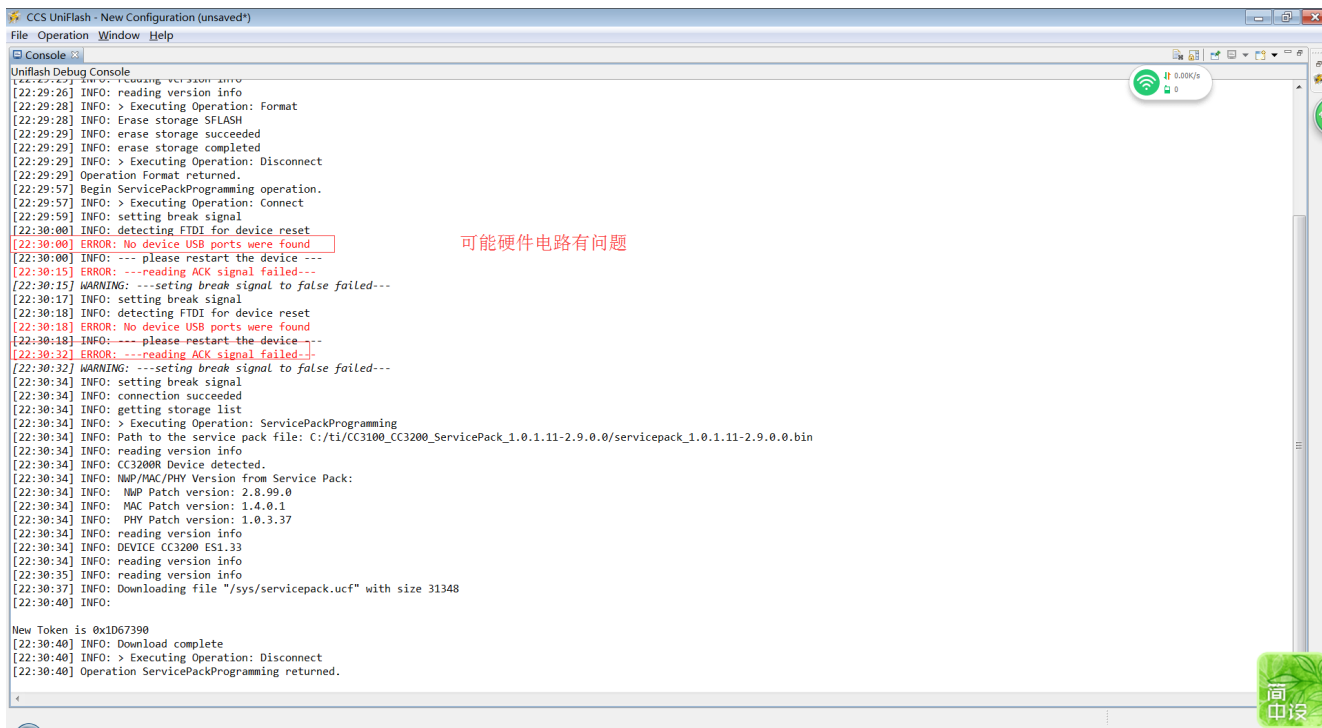
*****
    CC3200 HTTP S... A...
*****

:Y...HTTPS... 1351
H...D...V...: 1.0.1.6
B...V... 2.9.0.0.31.1.4.0.1.1.0.3.37
D...V...F...+...F...R...H...H...
"?

破BBF"?  在鮑@ : U誣UU綜++玠@

code ☆ 更多释义»
[kæud]
```

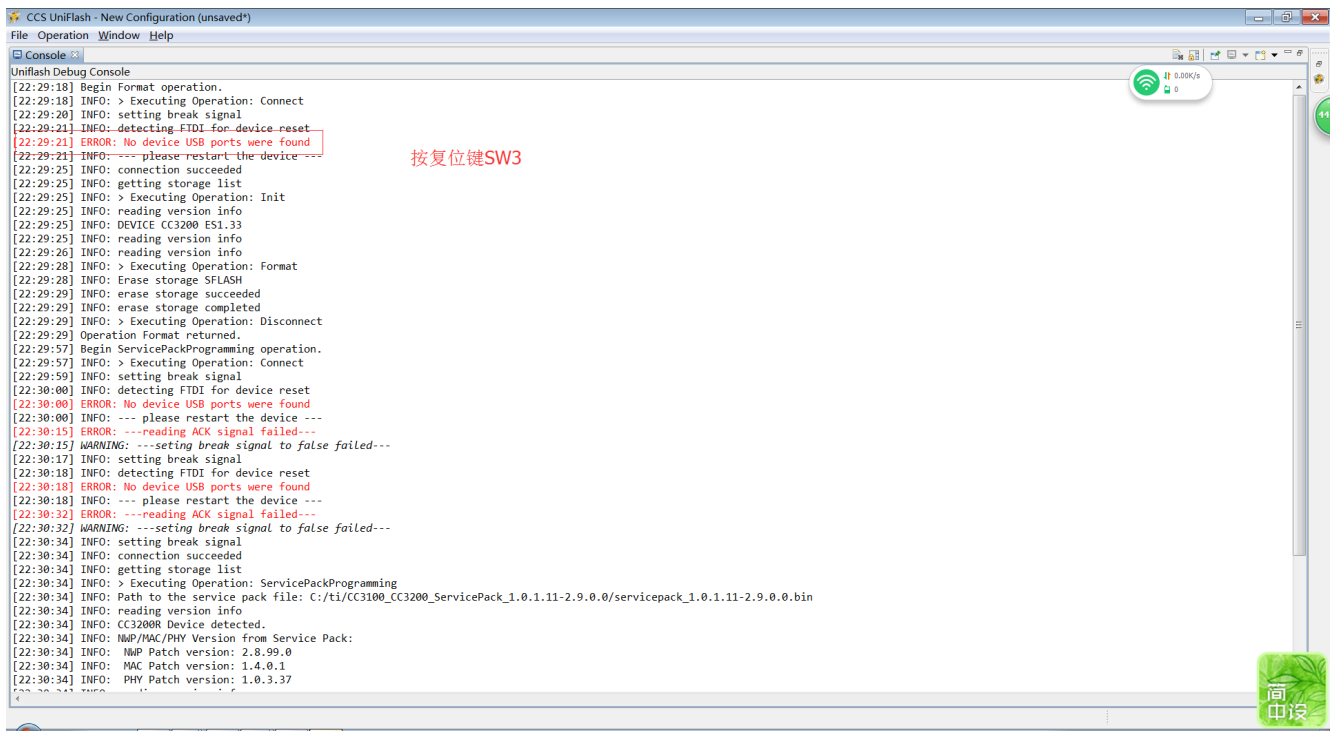
于是我重新格式化，注意硬件电路连接，然后将TI提供的服务包烧录。



```
CCS UniFlash - New Configuration (unsaved*)
File Operation Window Help

Console
Uniflash Debug Console
[22:29:27] INFO: Loading version info
[22:29:28] INFO: reading version info
[22:29:28] INFO: > Executing Operation: Format
[22:29:28] INFO: Erase storage SFLASH
[22:29:29] INFO: erase storage succeeded
[22:29:29] INFO: erase storage completed
[22:29:29] INFO: > Executing Operation: Disconnect
[22:29:29] Operation Format returned.
[22:29:57] Begin ServicePackProgramming operation.
[22:29:57] INFO: > Executing Operation: Connect
[22:29:59] INFO: setting break signal
[22:30:00] INFO: detecting FTDI for device reset
[22:30:00] ERROR: No device USB ports were found
[22:30:00] INFO: --- please restart the device ---
[22:30:15] ERROR: ---reading ACK signal failed---
[22:30:17] WARNING: ---setting break signal to false failed---
[22:30:17] INFO: setting break signal
[22:30:18] INFO: detecting FTDI for device reset
[22:30:18] ERROR: No device USB ports were found
[22:30:18] INFO: --- please restart the device ---
[22:30:32] ERROR: ---reading ACK signal failed---
[22:30:32] WARNING: ---setting break signal to false failed---
[22:30:34] INFO: setting break signal
[22:30:34] INFO: connection succeeded
[22:30:34] INFO: getting storage list
[22:30:34] INFO: > Executing Operation: ServicePackProgramming
[22:30:34] INFO: Path to the service pack file: C:/ti/CC3100_CC3200_ServicePack_1.0.1.11-2.9.0.0/servicepack_1.0.1.11-2.9.0.0.bin
[22:30:34] INFO: reading version info
[22:30:34] INFO: CC3200R Device detected.
[22:30:34] INFO: NMP/MAC/PHY Version from Service Pack:
[22:30:34] INFO: NMP Patch version: 2.8.99.0
[22:30:34] INFO: MAC Patch version: 1.4.0.1
[22:30:34] INFO: PHY Patch version: 1.0.3.37
[22:30:34] INFO: reading version info
[22:30:34] INFO: DEVICE CC3200 ES1.33
[22:30:34] INFO: reading version info
[22:30:35] INFO: reading version info
[22:30:37] INFO: Downloading file "/sys/servicepack.ucf" with size 31348
[22:30:40] INFO:
New Token is 0x1D67390
[22:30:40] INFO: Download complete
[22:30:40] INFO: > Executing Operation: Disconnect
[22:30:40] Operation ServicePackProgramming returned.
```

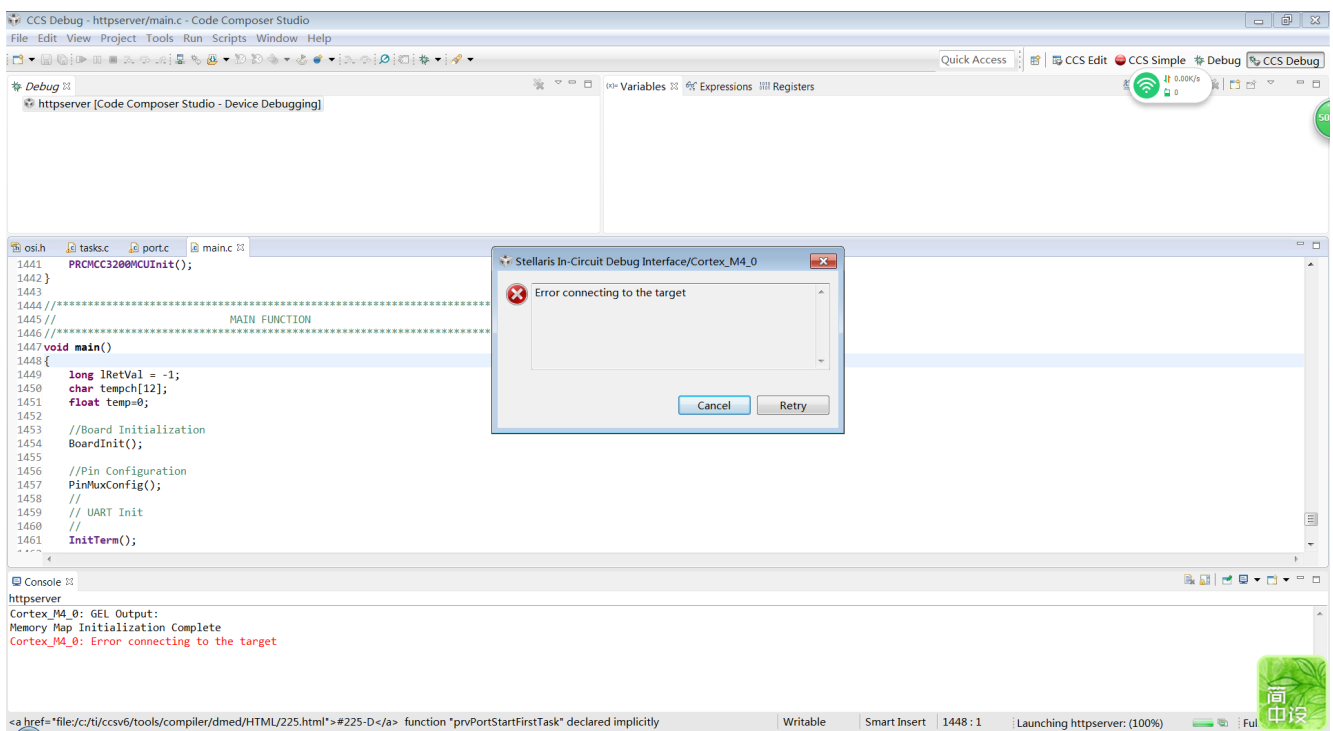
可能硬件电路有问题



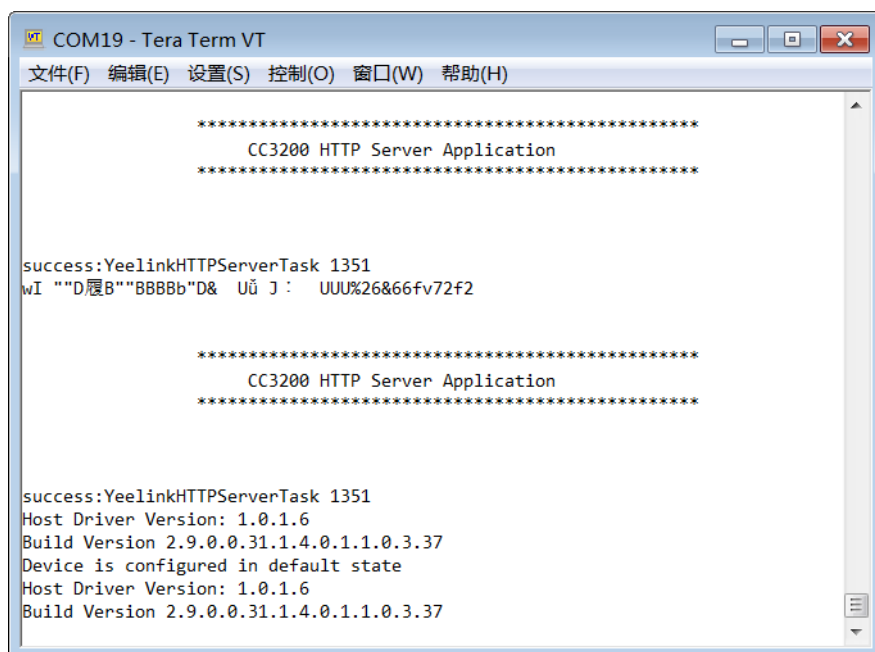
注意复位键为SW1.

接下来重启CCS，重新DEBUG。

出现这样情况可能是 串口被占用 或者硬件电路的模式选择错误。



初始化成功



```
COM19 - Tera Term VT
文件(F) 编辑(E) 设置(S) 控制(O) 窗口(W) 帮助(H)

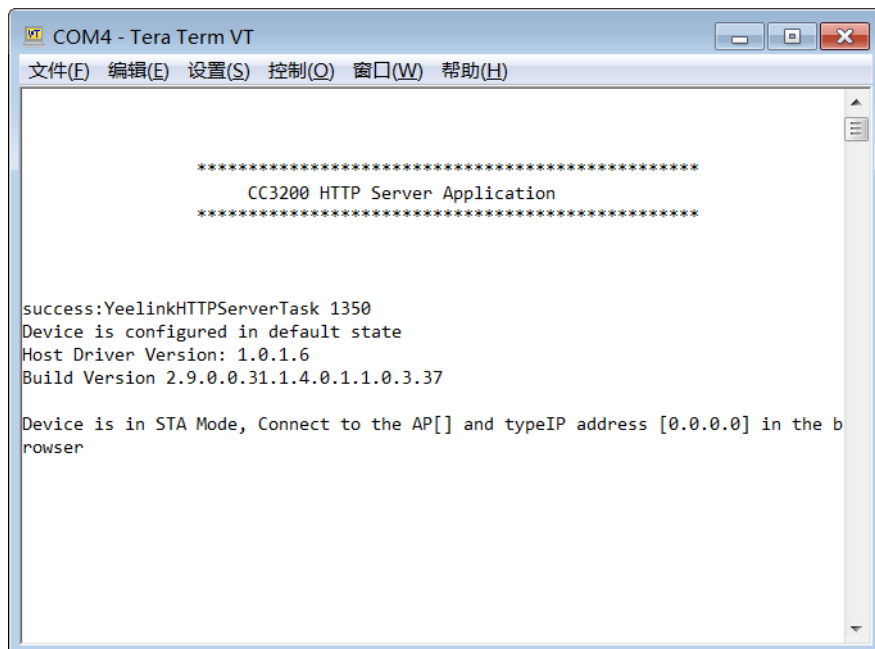
*****
CC3200 HTTP Server Application
*****

success:YeelinkHTTPServerTask 1351
wI ""D履B""BBBBb"D& Uü J : UUU%26&66fv72f2

*****
CC3200 HTTP Server Application
*****

success:YeelinkHTTPServerTask 1351
Host Driver Version: 1.0.1.6
Build Version 2.9.0.0.31.1.4.0.1.1.0.3.37
Device is configured in default state
Host Driver Version: 1.0.1.6
Build Version 2.9.0.0.31.1.4.0.1.1.0.3.37
```

现在遇到的问题是可连接到WFIF，但是发送不到YEElink的数据。



```
COM4 - Tera Term VT
文件(E) 编辑(E) 设置(S) 控制(Q) 窗口(W) 帮助(H)

*****
CC3200 HTTP Server Application
*****

success:YeelinkHTTPServerTask 1350
Device is configured in default state
Host Driver Version: 1.0.1.6
Build Version 2.9.0.0.31.1.4.0.1.1.0.3.37

Device is in STA Mode, Connect to the AP[] and typeIP address [0.0.0.0] in the browser
```

我接下来重新修改代码，在调试的时候发现没有连接上wifi通过手机热点和路由后天都没有发现CC3200设备连接上WiFi



```

管理员: C:\Windows\system32\cmd.exe
Microsoft Windows [版本 6.1.7601]
版权所有 (c) 2009 Microsoft Corporation。保留所有权利。

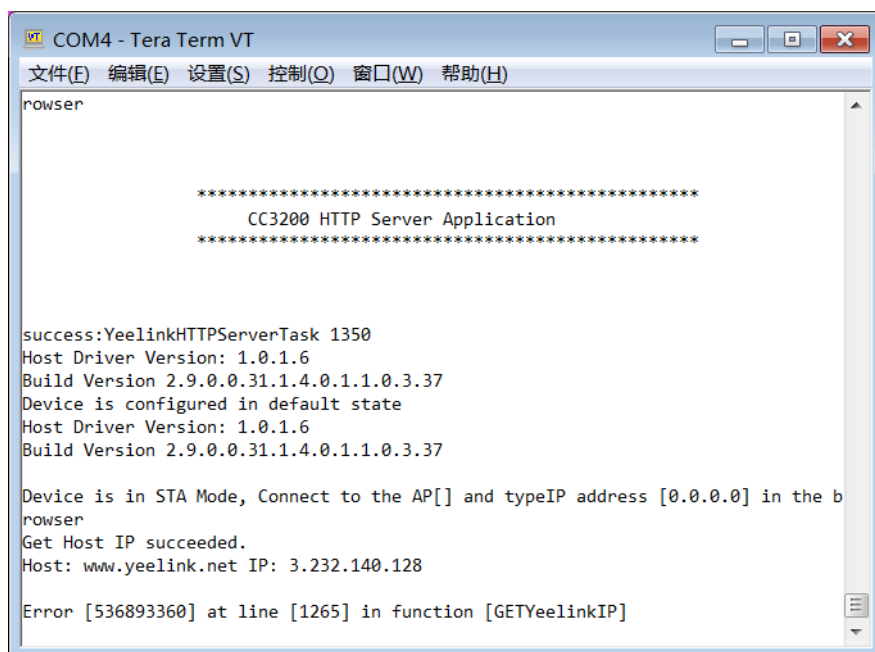
C:\Users\Administrator>arp -a

接口: 192.168.1.160 --- 0xc
Internet 地址      物理地址          类型
192.168.1.1        00-0c-43-e1-76-29 动态
192.168.1.70       40-e2-30-50-56-61 动态
192.168.1.195      bc-30-7e-10-18-a5 动态
192.168.1.225      68-3e-34-a6-b3-31 动态
192.168.1.235      18-4f-32-10-22-09 动态
192.168.1.255      ff-ff-ff-ff-ff-ff 静态
224.0.0.2          01-00-5e-00-00-02 静态
224.0.0.22         01-00-5e-00-00-16 静态
224.0.0.251        01-00-5e-00-00-fb 静态
224.0.0.252        01-00-5e-00-00-fc 静态
224.0.0.253        01-00-5e-00-00-fd 静态
232.60.9.175       01-00-5e-3c-09-af 静态
232.77.116.113     01-00-5e-4d-74-71 静态
239.192.152.143    01-00-5e-40-98-8f 静态
239.255.255.250    01-00-5e-7f-ff-fa 静态
255.255.255.255    ff-ff-ff-ff-ff-ff 静态

半:
  
```

将下面的wlanconnect 函数注释部分 后发现 串口打印如下错误





```
COM4 - Tera Term VT
文件(E) 编辑(E) 设置(S) 控制(O) 窗口(W) 帮助(H)

*****
CC3200 HTTP Server Application
*****

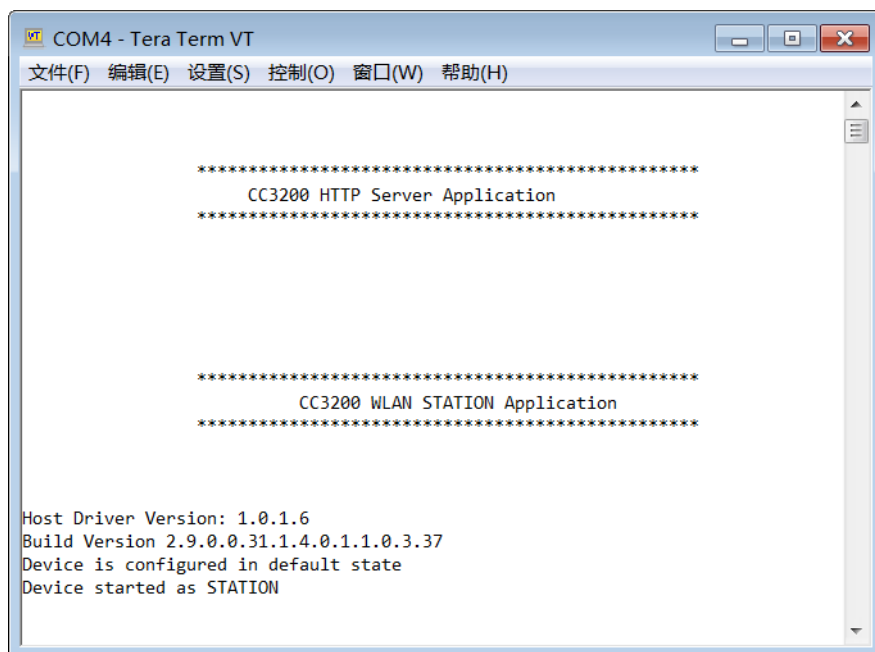
success:YeelinkHTTPServerTask 1350
Host Driver Version: 1.0.1.6
Build Version 2.9.0.0.31.1.4.0.1.1.0.3.37
Device is configured in default state
Host Driver Version: 1.0.1.6
Build Version 2.9.0.0.31.1.4.0.1.1.0.3.37

Device is in STA Mode, Connect to the AP[] and typeIP address [0.0.0.0] in the browser
Get Host IP succeeded.
Host: www.yeelink.net IP: 3.232.140.128

Error [536893360] at line [1265] in function [GETYeelinkIP]
```

这是个主要问题，在接下来我通过WALN Station 例程还是没有连接上wifi，不知道是什么原因。下面第二张图，是我跑WALN Station例程信息。

```
1153 //
1154 /// \ brief连接到WLAN接入点
1155 ///
1156 /// 此功能通过安全性连接到所需的AP (SSID_NAME)
1157 /// 在此文件顶部以宏形式指定的参数
1158 ///
1159 /// \ param状态值
1160 /// |
1161 /// \ return无
1162 ///
1163 /// \ warning如果WLAN连接失败或者我们没有获得IP
1164 /// 地址，将永远停留在此功能中。
1165 //*****
```



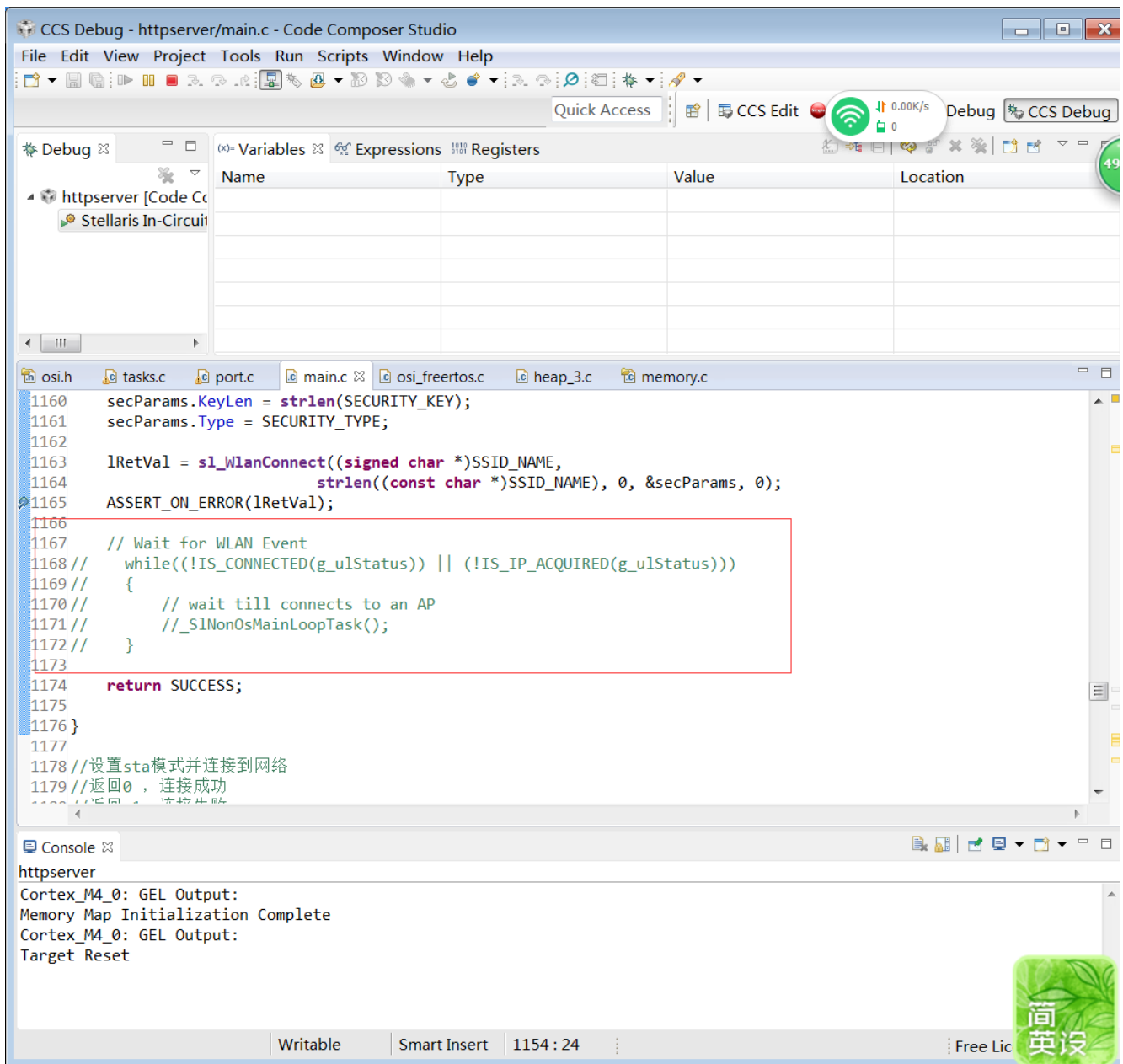
```
COM4 - Tera Term VT
文件(F) 编辑(E) 设置(S) 控制(O) 窗口(W) 帮助(H)

*****
CC3200 WLAN STATION Application
*****

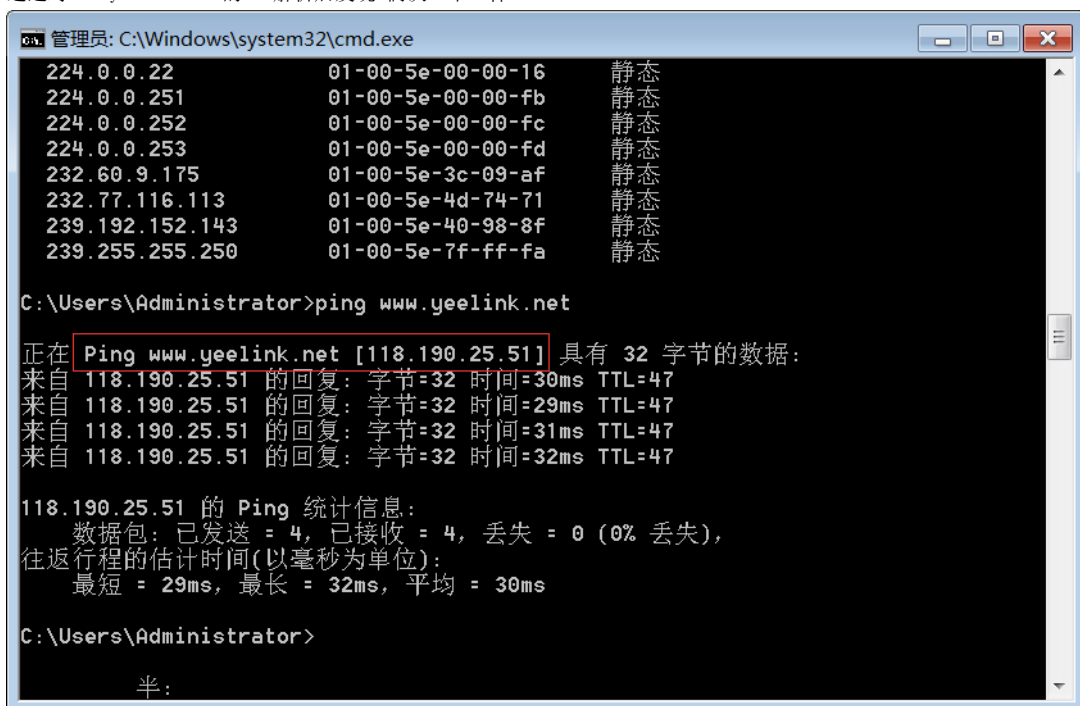
Host Driver Version: 1.0.1.6
Build Version 2.9.0.0.31.1.4.0.1.1.0.3.37
Device is configured in default state
Device started as STATION
```



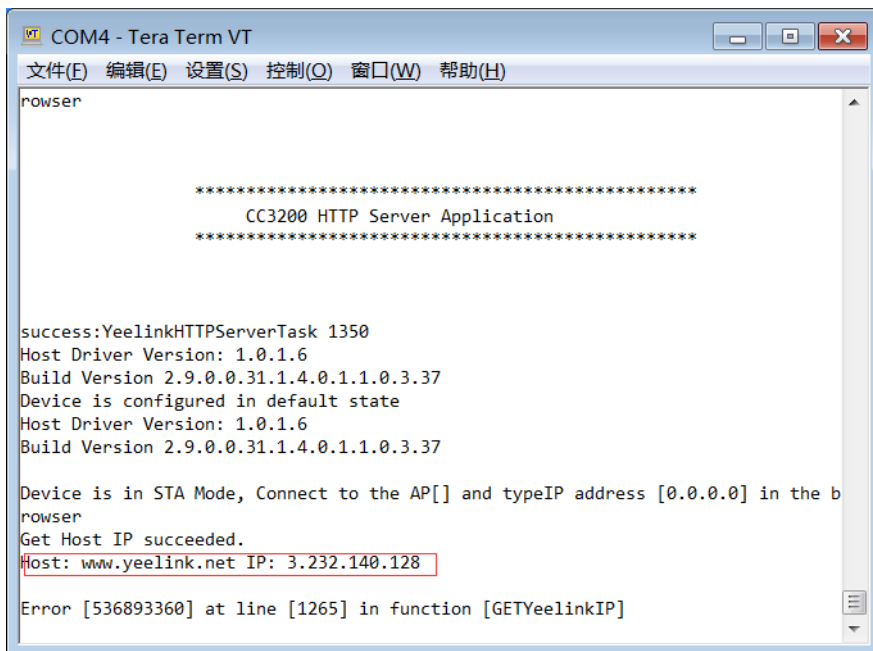
这是连接YEElink的例程图



通过对www.yeelink.net的DNS解析后发现 两次IP不一样







```
COM4 - Tera Term VT
文件(E) 编辑(E) 设置(S) 控制(C) 窗口(W) 帮助(H)

rowser

*****
CC3200 HTTP Server Application
*****

success:YeelinkHTTPServerTask 1350
Host Driver Version: 1.0.1.6
Build Version 2.9.0.0.31.1.4.0.1.1.0.3.37
Device is configured in default state
Host Driver Version: 1.0.1.6
Build Version 2.9.0.0.31.1.4.0.1.1.0.3.37

Device is in STA Mode, Connect to the AP[] and typeIP address [0.0.0.0] in the browser
Get Host IP succeeded.
Host: www.yeelink.net IP: 3.232.140.128

Error [536893360] at line [1265] in function [GETYeelinkIP]
```

再一次的尝试还是如此。。。。

## 0615 日志

### 设定STA模式

#### Source Files briefly explained

- **main.c** – main file creates the simplelink task which does most of the network related operations, a WlanStationMode task makes calls to the network related APIs of simplelink library.
- **startup\_ewarm.c** – IAR workbench specific vector table implementation for interrupts.
- **startup\_ccs.c** – IAR workbench specific vector table implementation for interrupts.
- **gpio\_if.c** - GPIO interface file for LED APIs
- **pinmux.c** - File to mux device pin to different peripheral signal.

#### Code flow

```
void WlanStationMode( void *pvParameters )
{
    ...
    //Start the SimpleLink
    lMode = sl_Start(0, 0, 0);
    ...
    // Connecting to WLAN AP
    // After this call we will be connected and have IP address */
    WlanConnect();
    ...
    // Checking the Lan connection by pinging to AP gateway
    lRetVal = CheckLanConnection();
    ...
    // Turn on GREEN LED when device gets PING response from AP
    GPIO_IF_LedOn(MCU_EXECUTE_SUCCESS_IND);
    ...
    // Checking the internet connection by pinging to external host
    lRetVal = CheckInternetConnection();
    ...
    // Turn on ORANGE LED when device gets PING response from AP
    GPIO_IF_LedOn(MCU_ORANGE_LED_GPIO);
    ...
}
```

Using the CC3200 as an STA is a simple three step process.

1. Start the SimpleLink by calling sl\_Start() API
2. Connect to the Access point by calling sl\_WlanConnect() API
3. Use the sl\_NetCfgGet API or check for 'SL\_NETAPP\_IPV4\_IPACQUIRED\_EVENT' NetApp Event to get the IP address of the device.

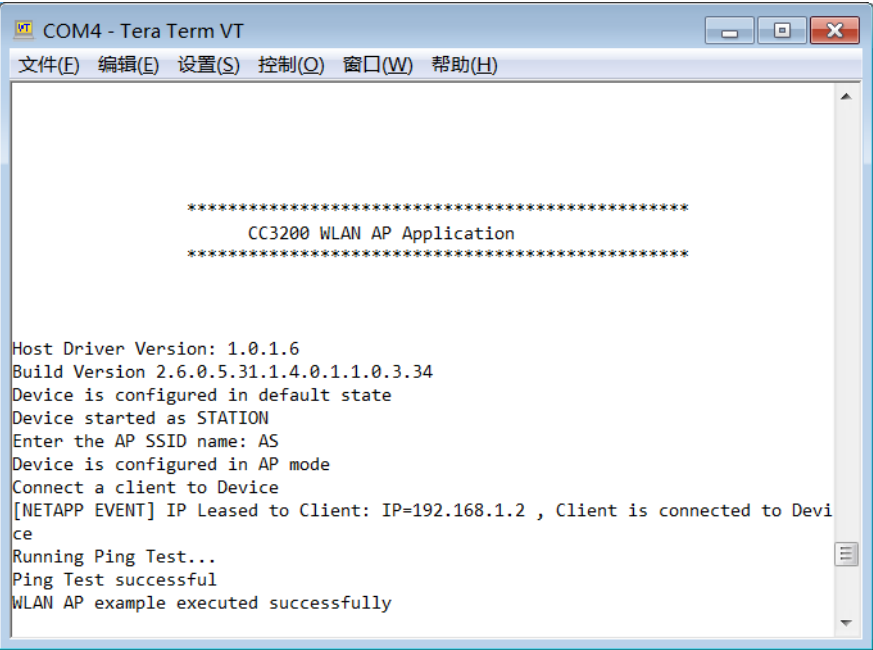
Refer to the main.c file of the reference application for more details

### 使用station 的一些编译步

骤[http://bbs.elecfans.com/jishu\\_597278\\_1\\_1.html](http://bbs.elecfans.com/jishu_597278_1_1.html)

<http://www.ti.com.cn/cn/lit/ug/swru376d/swru376d.pdf> （官方文档）

测试WLAN AP 也是可以的 成功的

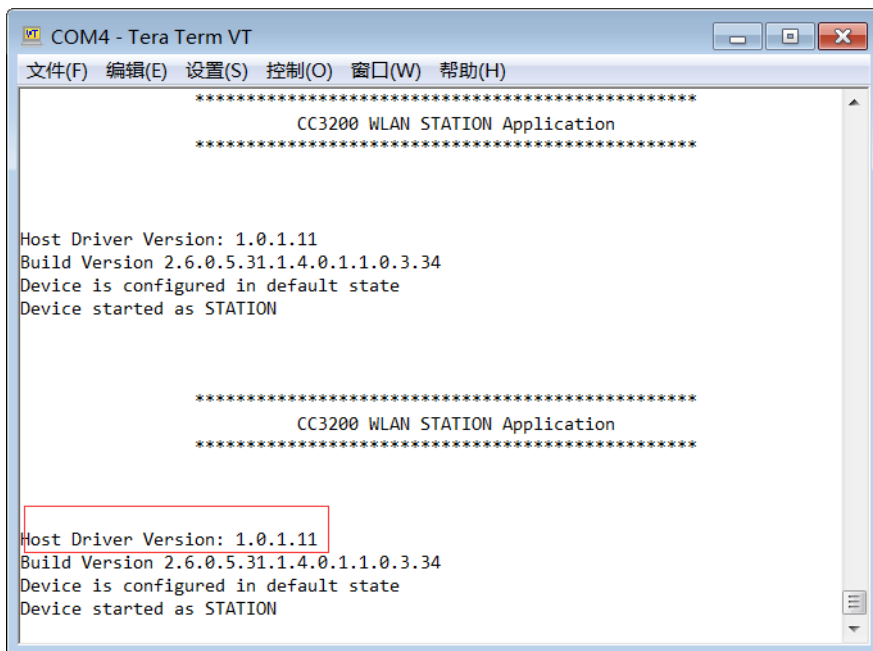


接下来猜测SDK1.2版本不行 于是我下载SDK1.3还是失败了



1.2.0没有了。。。。

我把驱动库更新（重建驱动库后连接失败）成1.3 看看行不



```
COM4 - Tera Term VT
文件(F) 编辑(E) 设置(S) 控制(O) 窗口(W) 帮助(H)

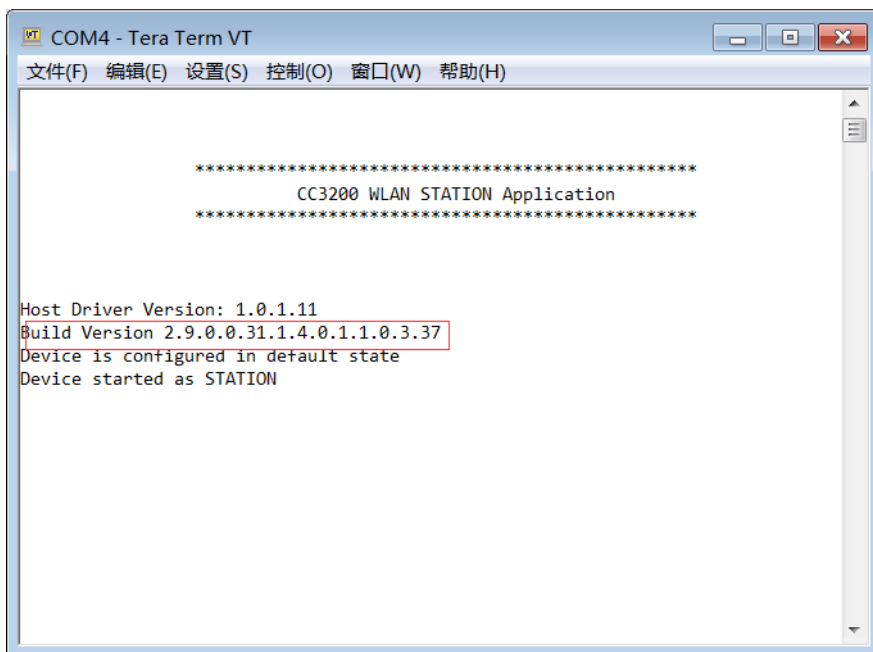
*****
CC3200 WLAN STATION Application
*****

Host Driver Version: 1.0.1.11
Build Version 2.6.0.5.31.1.4.0.1.1.0.3.34
Device is configured in default state
Device started as STATION

*****
CC3200 WLAN STATION Application
*****

Host Driver Version: 1.0.1.11
Build Version 2.6.0.5.31.1.4.0.1.1.0.3.34
Device is configured in default state
Device started as STATION
```

和版本没有关系，失败。



```
COM4 - Tera Term VT
文件(F) 编辑(E) 设置(S) 控制(O) 窗口(W) 帮助(H)

*****
CC3200 WLAN STATION Application
*****

Host Driver Version: 1.0.1.11
Build Version 2.9.0.0.31.1.4.0.1.1.0.3.37
Device is configured in default state
Device started as STATION
```

```
管理员: C:\Windows\system32\cmd.exe
Microsoft Windows [版本 6.1.7601]
版权所有 (c) 2009 Microsoft Corporation。保留所有权利。

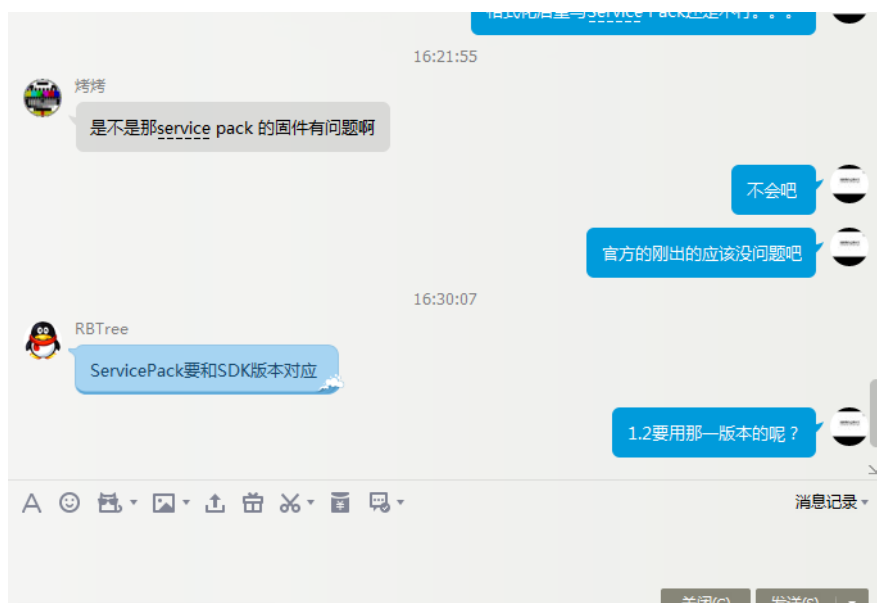
C:\Users\Administrator>arp -a

接口: 192.168.1.160 --- 0xc
Internet 地址      物理地址      类型
192.168.1.1        00-0c-43-e1-76-29 动态
192.168.1.101      00-09-4c-0a-2c-06 动态
192.168.1.147      14-2d-27-eb-05-2b 动态
192.168.1.202      d0-27-88-87-13-0f 动态
192.168.1.225      68-3e-34-a6-b3-31 动态
192.168.1.235      18-4f-32-10-22-09 动态
192.168.1.255      ff-ff-ff-ff-ff-ff 静态
224.0.0.2          01-00-5e-00-00-02 静态
224.0.0.22         01-00-5e-00-00-16 静态
224.0.0.251        01-00-5e-00-00-fb 静态
224.0.0.252        01-00-5e-00-00-fc 静态
224.0.0.253        01-00-5e-00-00-fd 静态
239.192.152.143    01-00-5e-40-98-8f 静态
239.255.255.250    01-00-5e-7f-ff-fa 静态
255.255.255.255    ff-ff-ff-ff-ff-ff 静态

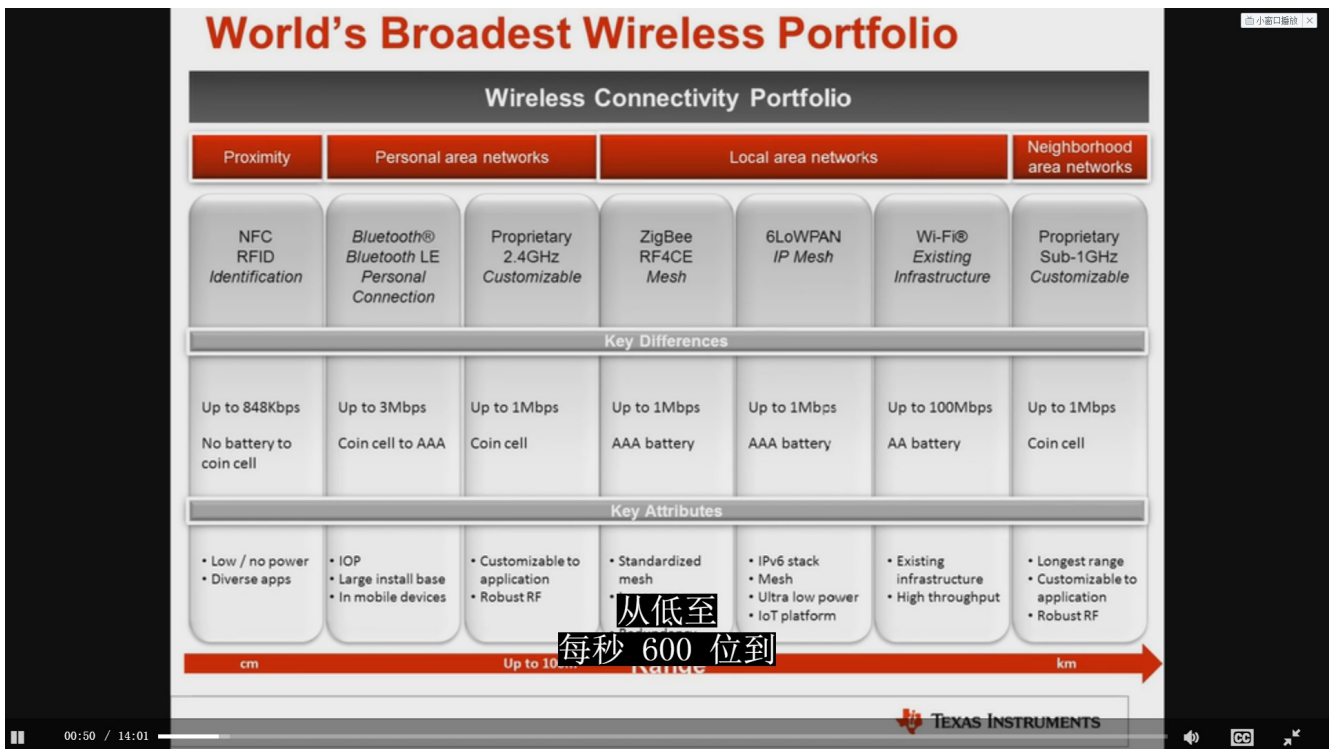
接口: 115.24.92.25 --- 0xe
半:
```

格式化（步骤不写了）后重写Service Pack还是不行。。。

然后在讨论中得到 这个结论



接下来尝试连接手机热点 GOOD LUCK TO ME!



17.06.28

cc3200 如果连不上WiFi 跑官方例程 WLAN station, 连不上wifi 简单处理办法 放置一到俩天 我放了有一个星期 就解决了

```

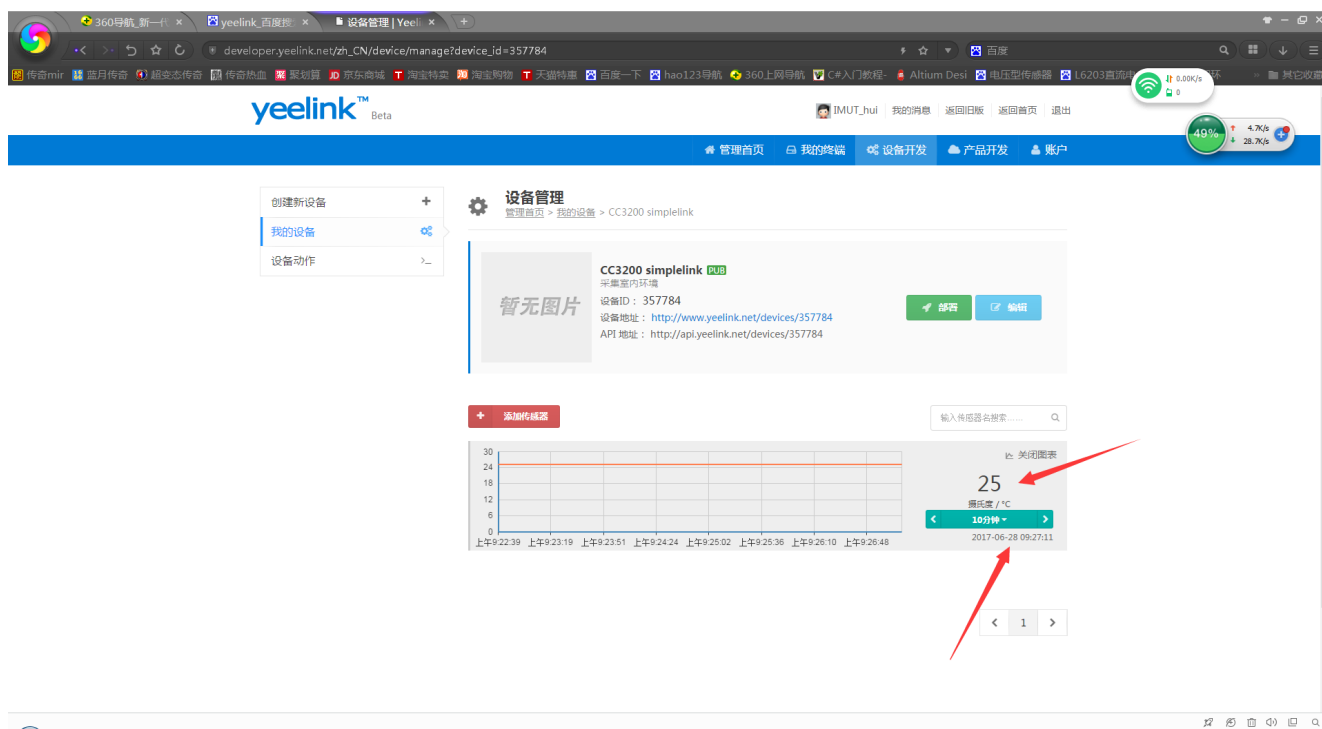
COM4 - Tera Term VT
文件(E) 编辑(E) 设置(S) 控制(Q) 窗口(W) 帮助(H)
Host:api.yeelink.net
Accept: */*
U-ApiKey: 6075bf219d21a6bcf4726e0c8a77bfda
Content-Length: 0
Connection: close

Receive:
HTTP/1.1 406 Not Acceptable
Server: nginx/1.1.19
Date: Wed, 28 Jun 2017 01:26:53 GMT
Content-Type: text/html
Transfer-Encoding: chunked
Connection: close
X-Powered-By: PHP/5.3.10-1ubuntu3.6

27
{"error": "DEVICE AND SENSOR NOT MATCH"}
0

```





这是我关于CC3200连接wifi调试日志 发现了一个问题 CC3200在不断的使用过程中 跑WLAN station 连接不上WiFi ，并且有一些同学也在遇到过同样的问题 解决办法呢都是放置一段时间 就可以连接wifi了。WLAN station 例程 当时我尝试连接有十多次吧 都是失败，感觉肯定有问题 具体是硬件还是代码就不知道了 也有可能是路由器的问題，但是当时我利用手机热点测试过 也是连接不同的，也可能是采用 http 产生了阻塞，导致不去响应下一个进程。