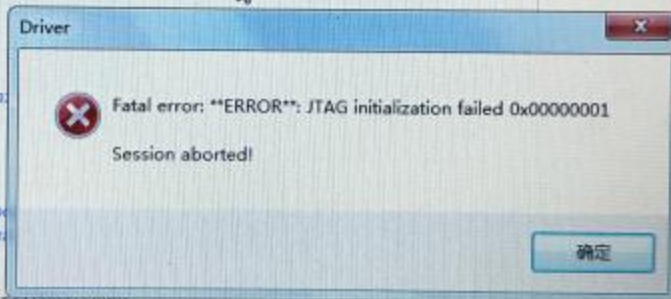


```

main.c
//
/// Main function
///
/// \param none
///
/// This function
/// 1. Invokes the LEDBlinkyTask
///
/// \return None.
//
//.....
int
main()
{
    //
    // Initialize Board con
    //
    BoardInit();

    //
    // Power on the correspo
    // Set up the GPIO line
    //
    PinMuxConfig();
    GPIO_IF_LedConfigure(LED1|LED2|LED3);

    GPIO_IF_LedOff(MCU_ALL_LED_IND);
    
```

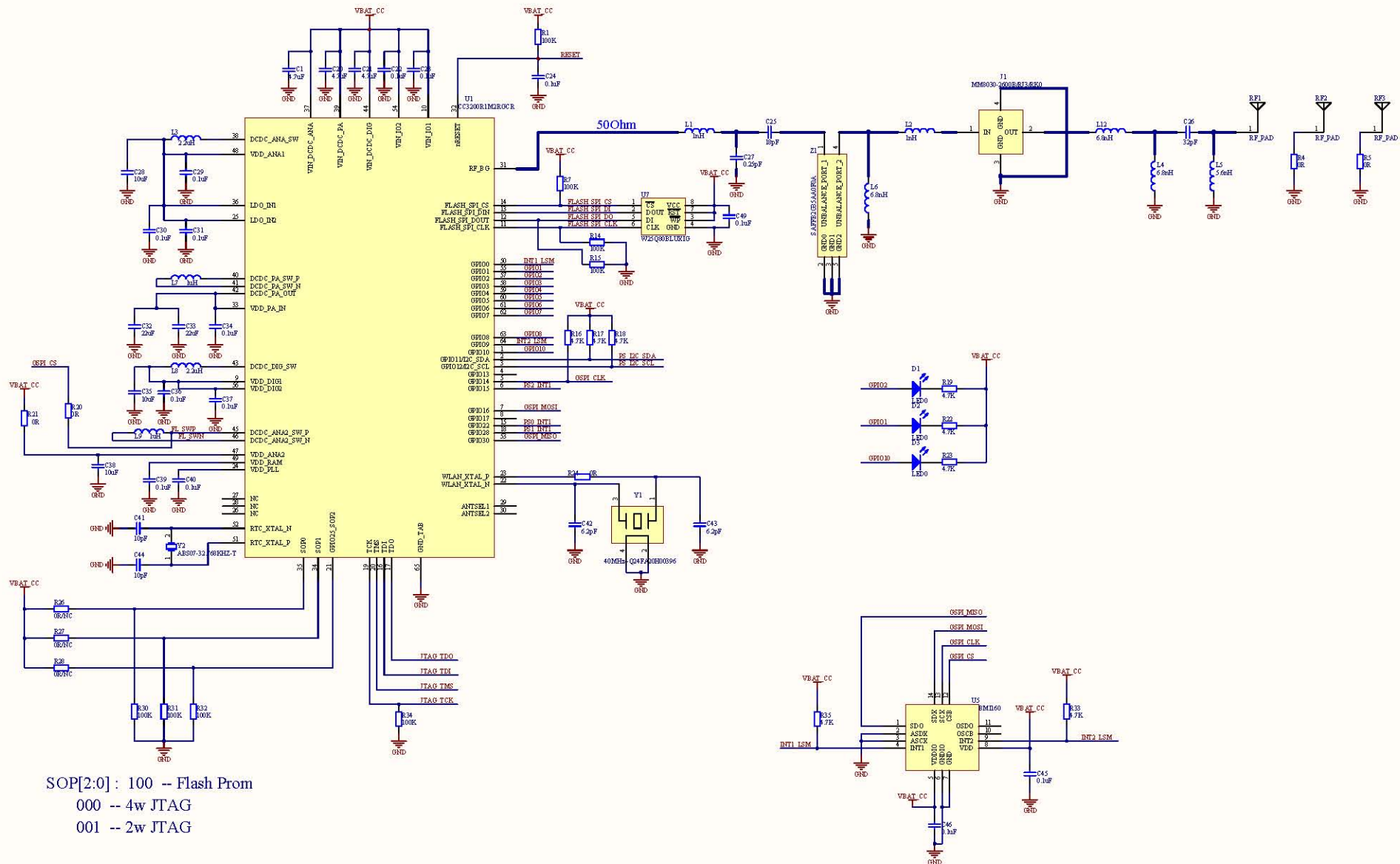


Messages

Building configuration: blinky - Release
Updating build tree..

Configuration is up-to-date

File



SOP[2:0] : 100 -- Flash Prom
 000 -- 4w JTAG
 001 -- 2w JTAG

UART0 : download flash
 UART0_TX : IO1 IO7 IO12 -- IO1
 UART0_RX : IO2 IO13 IO31--IO2

UART1_TX : IO1 IO10 IO16 ---- IO10
 UART1_RX : IO2 IO4 IO11 IO17--IO4

陀螺仪

Title		
Sim	Number	Revision
A2		
Date	2017-12-03	Sheet of
File	D:\8-3 资料\CC3200 SchDoc	Drawn by