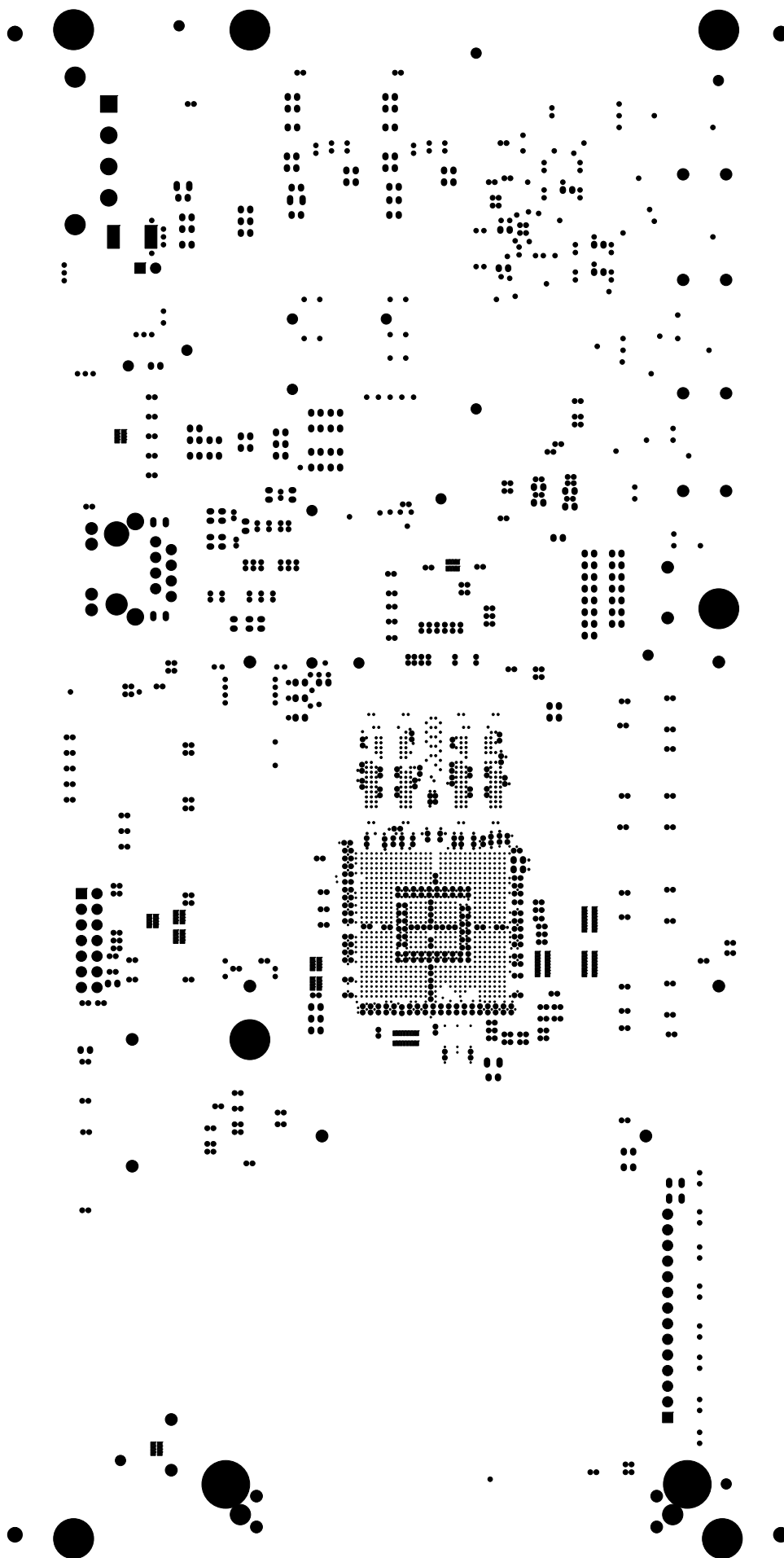
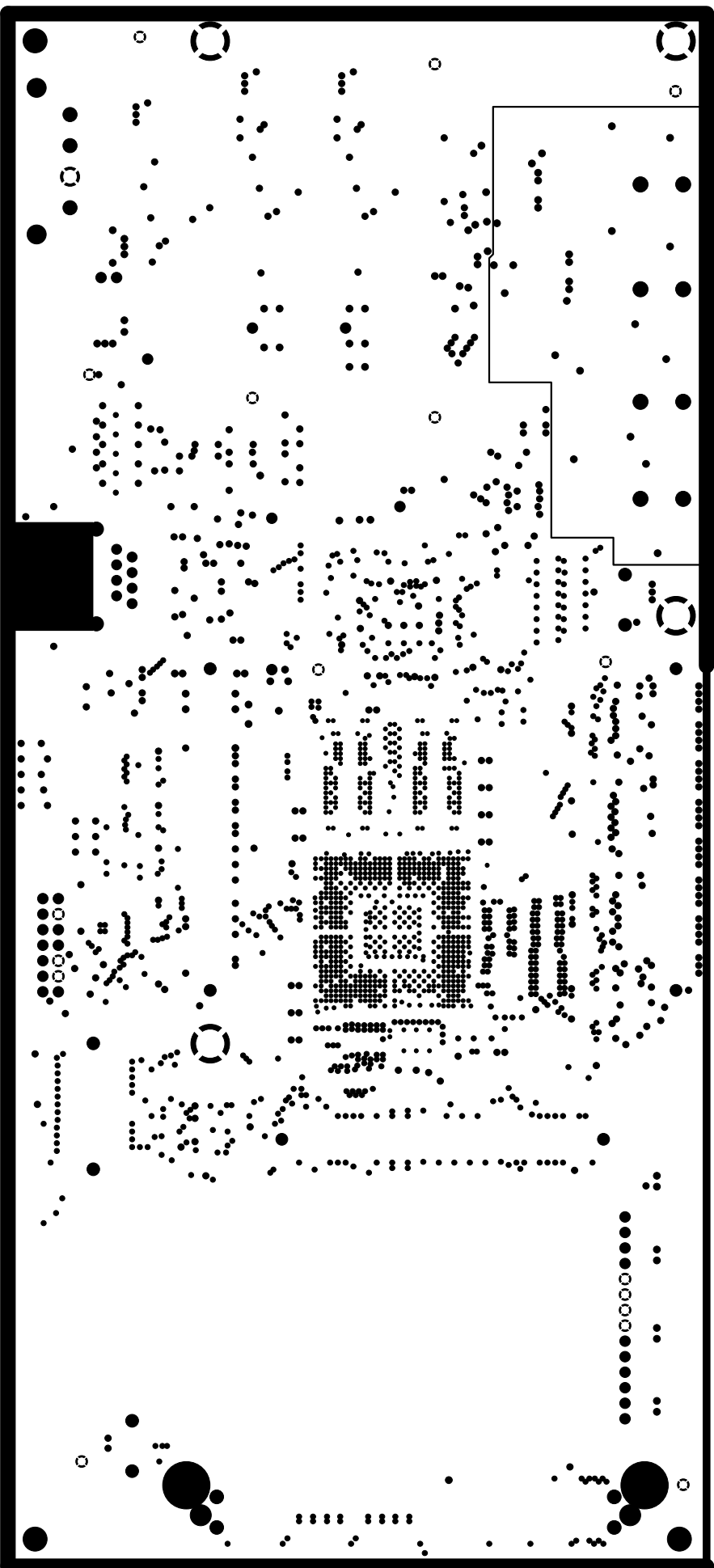


PWB 508551 REV C  
6-1-06  
ST PATAJ - 3D12 MOTTOR



PWB 508551 REV C  
6-1-06  
BOTTOM SIDE SOLDERMASK





PWB 508551 REV C  
6-1-06  
GND PLANE - LAYER 2,5,8 & 11

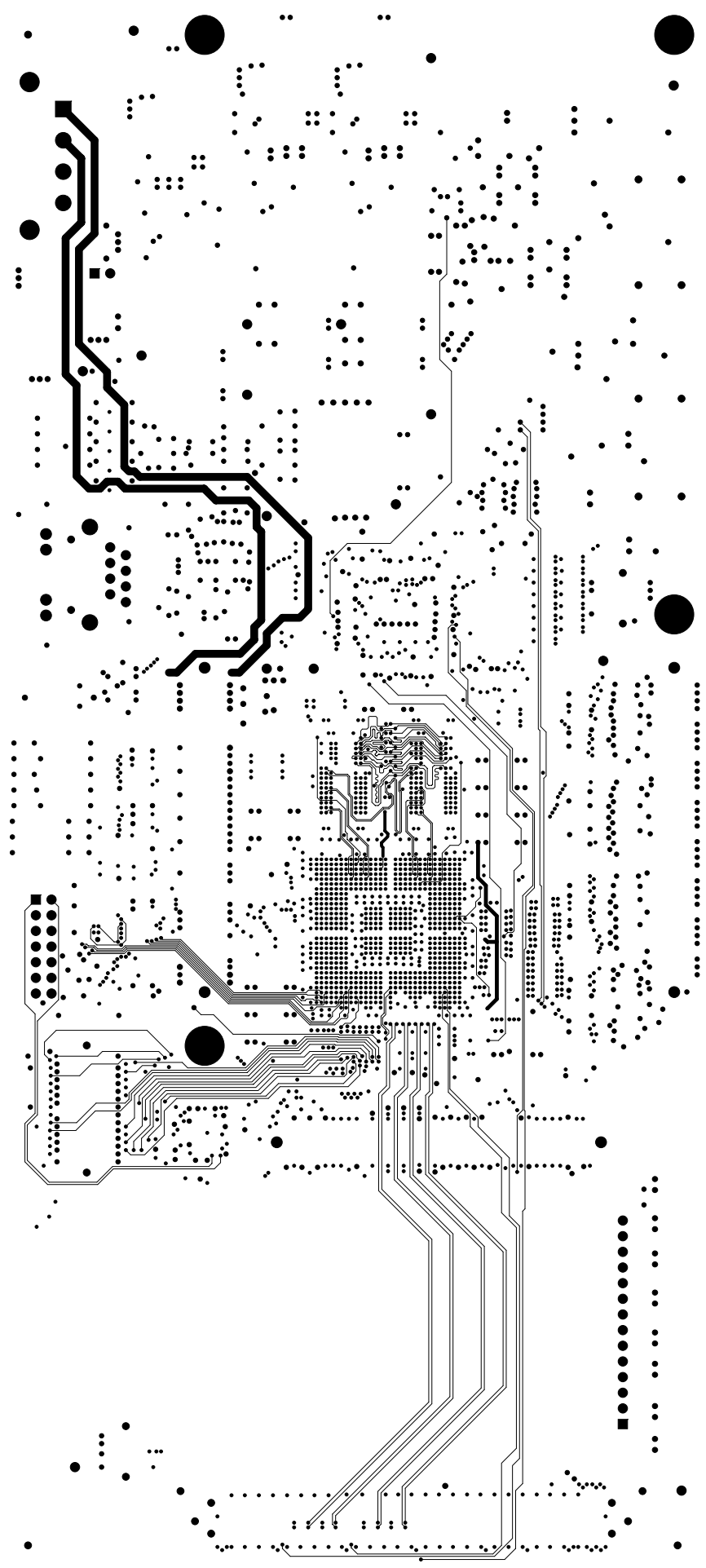
2 5 8 11

PWB 508551 REV C  
6-1-06  
MID LAYER 1 - LAYER 3

PWB 508551 REV C  
6-1-06  
MID LAYER 2 - LAYER 4

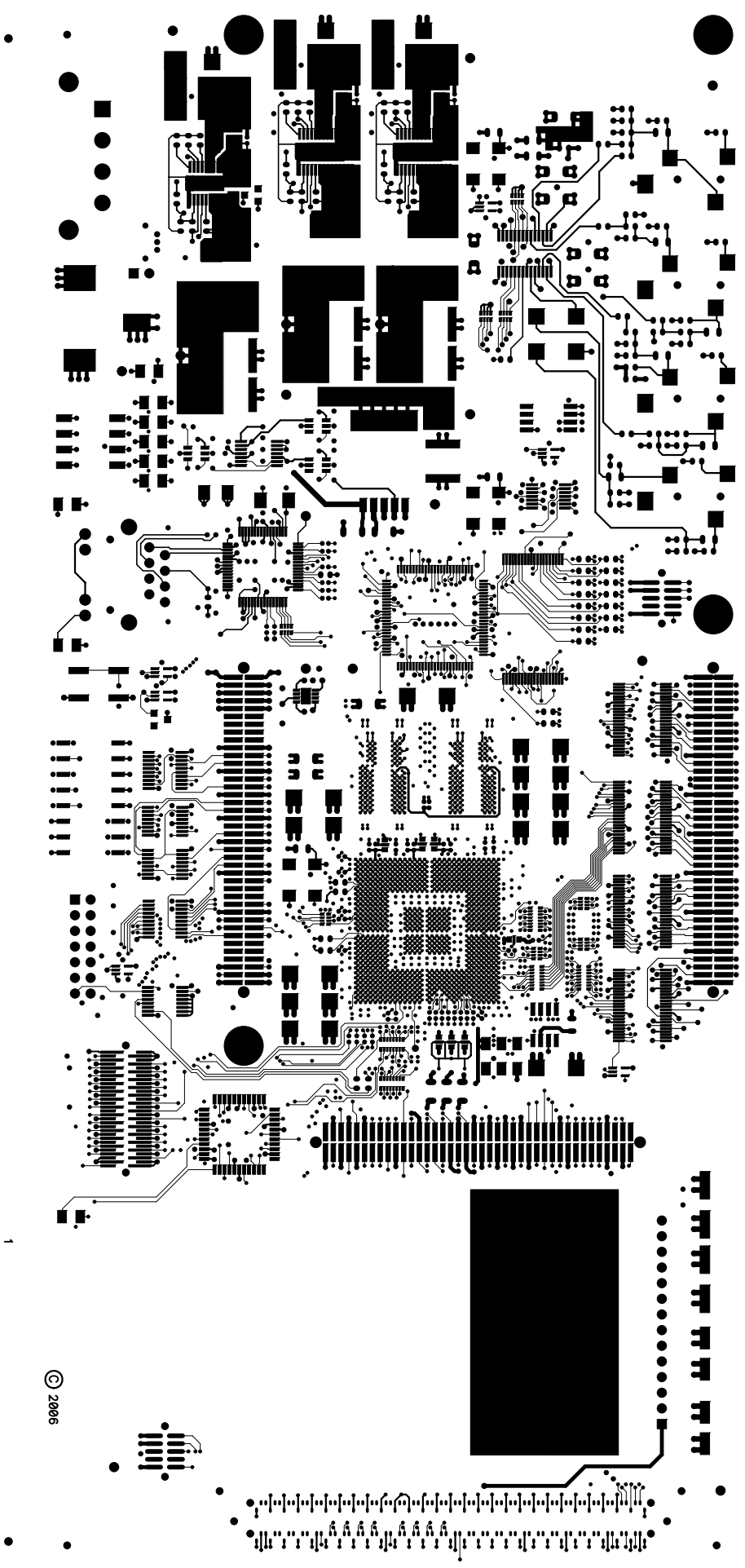
PWB 508551 REV C  
6-1-06  
MID LAYER 3 - LAYER 9

PWB 508551 REV C  
6-1-06  
MID LAYER 4 - LAYER 10



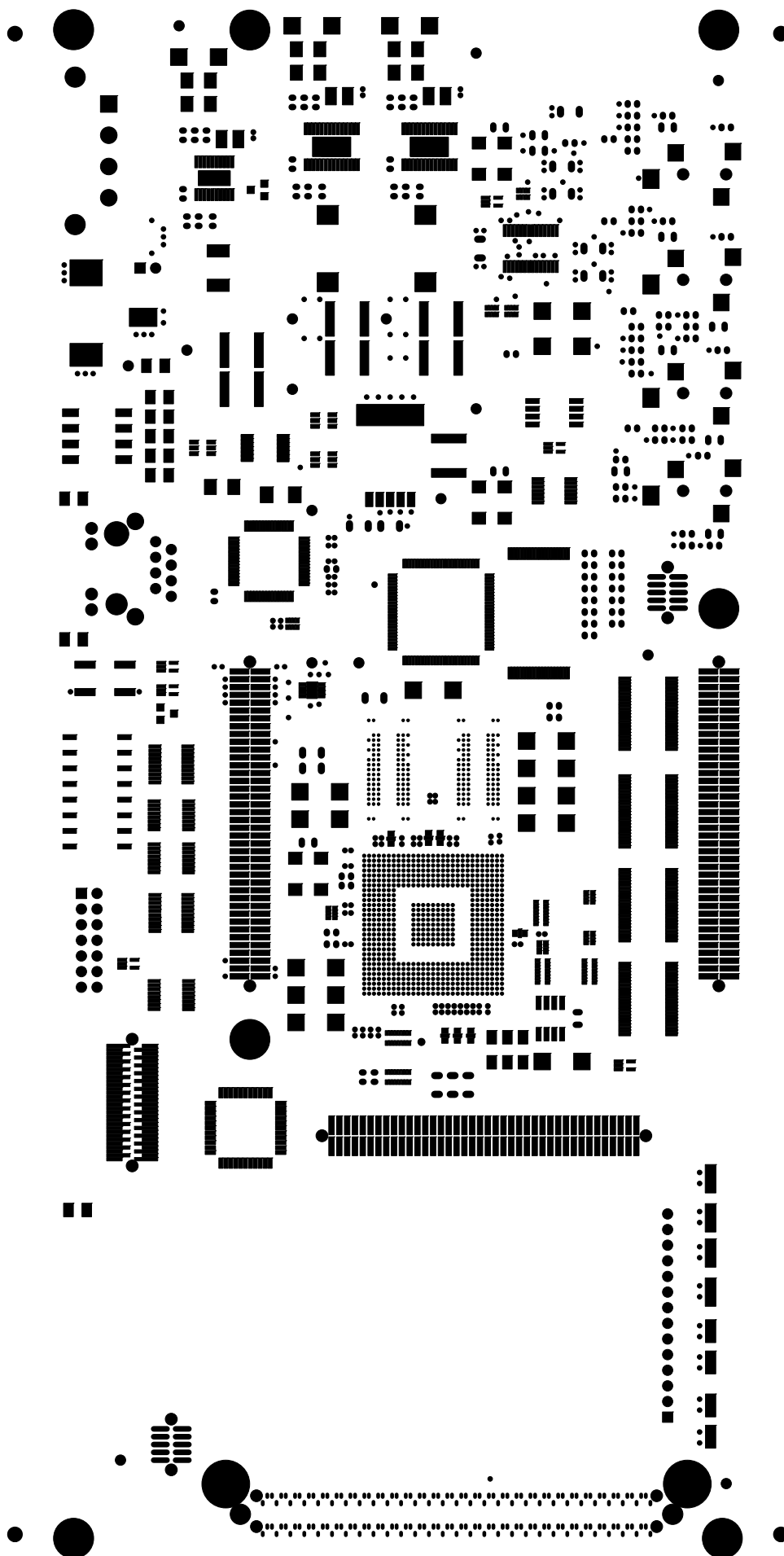


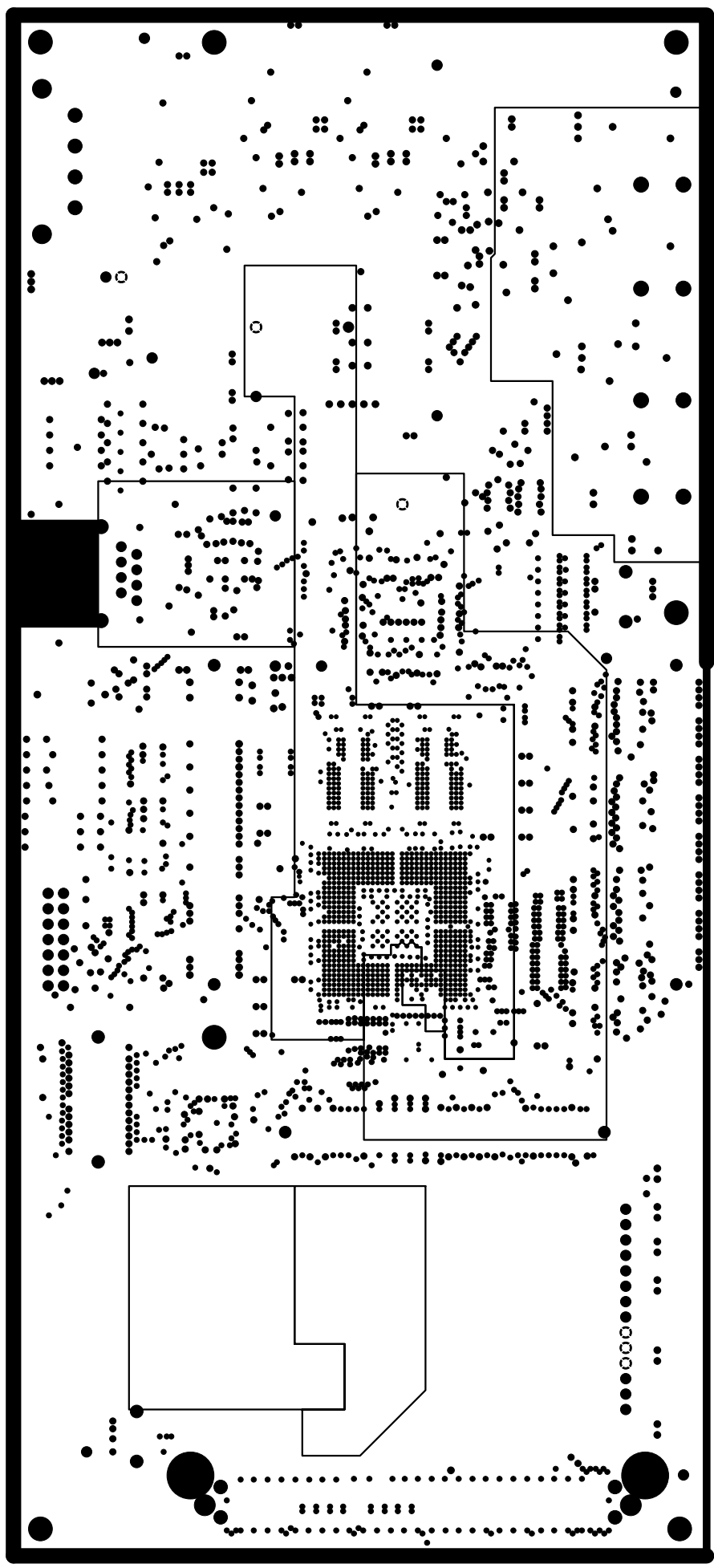
PWB 508551 REV C  
6-1-06  
TOP SIDE - LAYER 1





PWB 508551 REV C  
6-1-06  
TOP SIDE SOLDERMASK





PWB 508551 REV C  
6-1-06  
VCC PLANE 2 - LAYER 7

PWB 508551 REV C  
6-1-06  
VCC PLANE - LAYER 6

## NOTES: UNLESS OTHERWISE SPECIFIED

- 1 MATERIAL: HIGH TEMP FR4 (TG=170).
- 2 THICKNESS: .062.
- 3 DIMENSIONS APPLY TO THE CENTER OF HOLES AND PADS.
- 4 ALL NON-DIMENSIONAL HOLES ARE ON .025 GRID INCREMENTS IN RELATION TO DATUM 0.
- 5 HOLES ARE TO BE LOCATED WITHIN .062 DATUM POSITION DATUM 0 WHEN PINNED TO PLANE A.
- 6 MINIMUM COPPER WALL THICKNESS SHALL BE .001 FOR ALL PLATED THRU HOLES.

- 6 ALL ARTWORK VIEWED FROM COMPONENT SIDE.
- 7 HOLE DIAMETERS AND TOLERANCES SHOWN ARE AFTER PLATING.
- 8 MAXIMUM ALLOWABLE LINE REDUCTION DUE TO PIN HOLES, NICKS AND LINE SHRINKAGE IS TO BE 20%.
- 9 INTERNAL AND EXTERNAL CORNERS TO BE .06 RADIUS MAX AT SHOP OPTION.
- 10 EDGE CONNECTOR TABS ARE TO BE ELECTROPLATED TO A MINIMUM THICKNESS OF .00005 GOLD OVER A MINIMUM THICKNESS OF .0001 NICKEL.

- 11 SOLDER MASK SHALL BE LIQUID PHOTOIMAGEABLE MATE FINISH WITH A THICKNESS NOT TO EXCEED 1.5 MILS AND SHALL BE APPLIED TO BOTH SIDES OF BOARD OVER BARE COPPER PER IPC-SM-840, CLASS 2.
- 12 EXPOSED CONDUCTOR AREAS TO BE FINISHED WITH ELECTROLESS NICKEL, THICKNESS .000050 MINIMUM, PLUS IMMERSION GOLD, THICKNESS .000005 MINIMUM.
- 13 SILKSCREEN BOTH SIDES WITH WHITE EPOXY BASED INK PER SILKSCREEN ARTWORK.
- 14 BOARD IS TO BE 100% ELECTRICALLY TESTED.
- 15 CONTROLLED IMPEDANCE OF 55 OHMS +5/-5 OHMS TO BE MATCHED ON ALL SIGNAL LAYERS ON 5 MIL TRACES.
- 16 5.1 MIL TRACES ON LAYERS 4 AND 10 TO BE 55 OHM, SINGLE ENDED AND 100 OHM DIFFERENTIAL.

TABLE OF LAYERS		
NO.	DESCRIPTION	COPPER WT.
11	TOP SIDE	1/2 OZ.
12	END PLANE	1 OZ.
13	MID LAYER 1	1 OZ.
14	MID LAYER 2	1 OZ.
15	END PLANE	1 OZ.
16	VCC PLANE	1 OZ.
17	VCC PLANE 2	1 OZ.
18	END PLANE	1 OZ.
19	MID LAYER 3	1 OZ.
110	MID LAYER 4	1 OZ.
111	END PLANE	1 OZ.
112	BOTTOM SIDE	1/2 OZ.

Drill Table		
Hole Size (inches)	Symbol	Quantity
0.0085	X	1699
0.010	+	811
0.012	Y	766
0.015	+	177
0.020	M	8
0.025	M	8
0.030	+	46
0.047	+	18
0.052	+	2
0.053	+	4
0.059	+	4
0.062	+	6
0.068	+	6
0.093	+	2
0.106	+	2
0.125	+	7
0.178	+	1
0.275	+	2