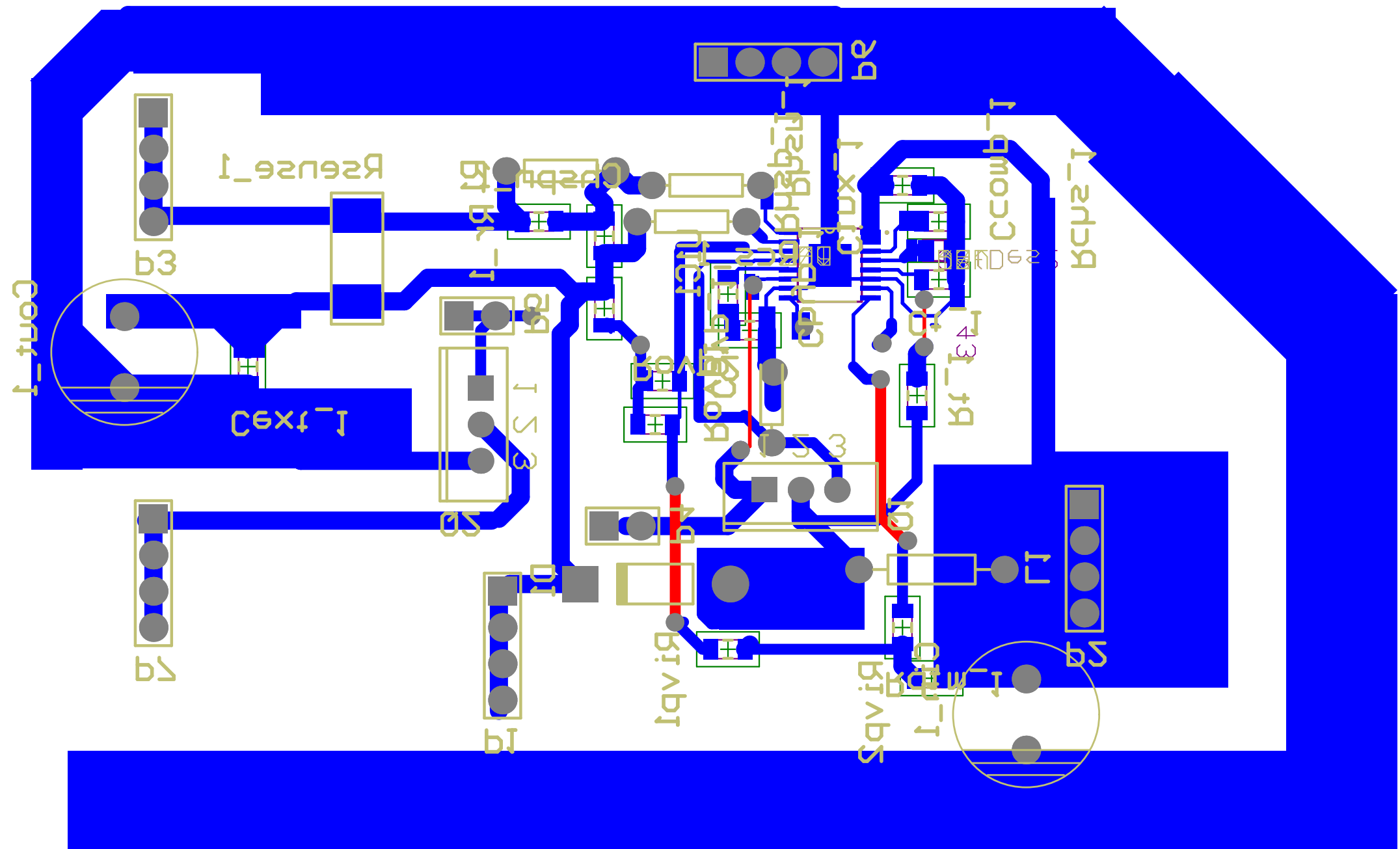


Title		
Size	Number	Revision
A		
Date:	2014/9/2	Sheet of
File:	D:\ad\...\2014-08-10 04-26-401.schdoc	Drawn By:



Comment	Description	Designator	Footprint	LibRef	Quantity
Cap	Capacitor	C1	C2012	Cap	1
EMK212B7225KG-T	EMK212B7225KG-T	Cbyp_1	C2012	EMK212B7225KG-T	1
GRM21BR71E334KA01L	GRM21BR71E334KA0	Ccomp_1	C2012	GRM21BR71E334KA01L	1
C0805C104K5RAC TU	C0805C104K5RAC TU	Cext_1	C2012	C0805C104K5RAC TU	1
CC0805KRX7R9BB104	CC0805KRX7R9BB10	Chspn_1	C2012	CC0805KRX7R9BB104	1
C0603C104K3RAC TU	C0603C104K3RAC TU	Cinx_1	RAD-0.2	C0603C104K3RAC TU	1
EEE-FK1E101P	EEE-FK1E101P	Cin_1	CAE-10	EEE-FK1E101P	1
35SVPF22M	35SVPF22M	Cout_1	CAE-10	35SVPF22M	1
CC0805JRNP09BN470	CC0805JRNP09BN47	Covp_1	C2012	CC0805JRNP09BN470	1
CC0805KRX7R9BB102	CC0805KRX7R9BB00	Ct_1	C2012	CC0805KRX7R9BB102	1
Diode 1N4007	1 Amp General Purpose Rectifier	D1	DIO10.46-5.3x2.8	Diode 1N4007	1
SER2915L-333KL	SER2915L-333KL	L1	AXIAL-0.4	SER2915L-333KL	1
Header 4	Header, 4-Pin	P1, P2, P3, P6, P7	HDR1X4	Header 4	5
Header 2	Header, 2-Pin	P4, P5	HDR1X2	Header 2	2
IRF540N	HEXFET Power MOSFET	Q1, Q2	TO-220AB	IRF540N	2
Res2	Resistor	R1	AXIAL-0.3	Res2	1
ERJ-6ENF1242V	ERJ-6ENF1242V	Rchs_1	0805	ERJ-6ENF1242V	1
CRM2010-FZ-R082ELF	CRM2010-FZ-R082E	Rcs_1	2512R	CRM2010-FZ-R082ELF	1
ERJ-6ENF2552V	ERJ-6ENF2552V	Rdim_1	C2012	ERJ-6ENF2552V	1
ERJ-6ENF1001V	ERJ-6ENF1001V	Rhsn_1, Rhsp_1	AXIAL-0.3	ERJ-6ENF1001V	2
ERJ-6ENF3831V	ERJ-6ENF3831V	Rivp1	C2012	ERJ-6ENF3831V	1
ERJ-6ENF1002V	ERJ-6ENF1002V	Rivp2	C2012	ERJ-6ENF1002V	1
ERJ-6ENF2152V	ERJ-6ENF2152V	Rovp1	C2012	ERJ-6ENF2152V	1
ERJ-6ENF5113V	ERJ-6ENF5113V	Rovp2	C2012	ERJ-6ENF5113V	1
CRCW080510R0FKEA	CRCW080510R0FKEA	Rr_1	C2012	CRCW080510R0FKEA	1
ERJ-3RQFR27V	ERJ-3RQFR27V	Rsense_1	2512R	ERJ-3RQFR27V	1
ERJ-6ENF7322V	ERJ-6ENF7322V	Rt_1	C2012	ERJ-6ENF7322V	1
LM3421MHX/NOPE	LM3421MHX/NOPE	U1	MXA16A	LM3421MHX/NOPE	1