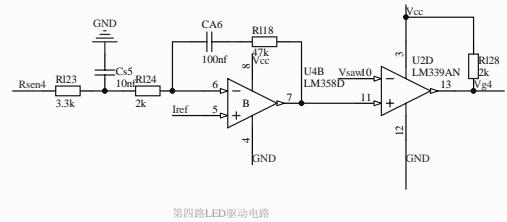
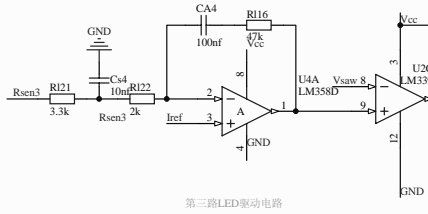
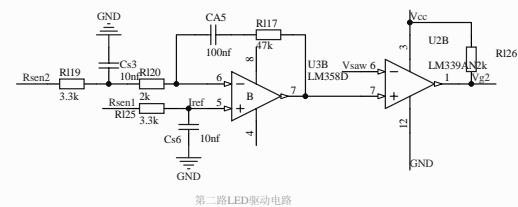
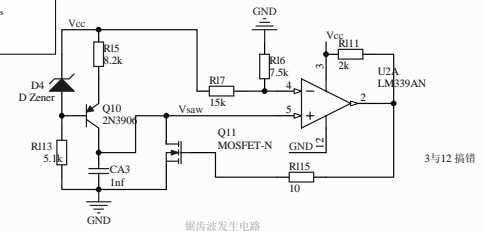
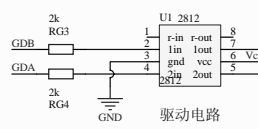
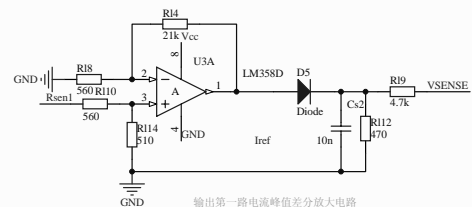


- 注:
1. MOS Vg1的控制信号由外部单片机产生, Vg1的最大占空比不能为100%
 2. 驱动芯片Ucc28060不需要, 可以省去
 3. 开关管频率设置在70k左右
 4. 磁芯选用
 5. 输入4.2550V, 输出100V/120W, 4RLED并联
 6. 二极管D1和D2共用一个共阳极特快二极管, 40CPQ100, 封装为TO-247, 请注意.
 7. 主开关管mos管选用IRF540, TO220封装
 8. 前级mos管选用1N80B-stan, To-92封装, 脚位: 平面朝上, 由左至右, g-d-s
 9. Vcc 15V Vsw 5V



Title		
Size	Number	Revision
A4		
Date:	2012-3-22	Sheet of
File:	D:\Document\...ucc28060.SchDoc	Drawn By: