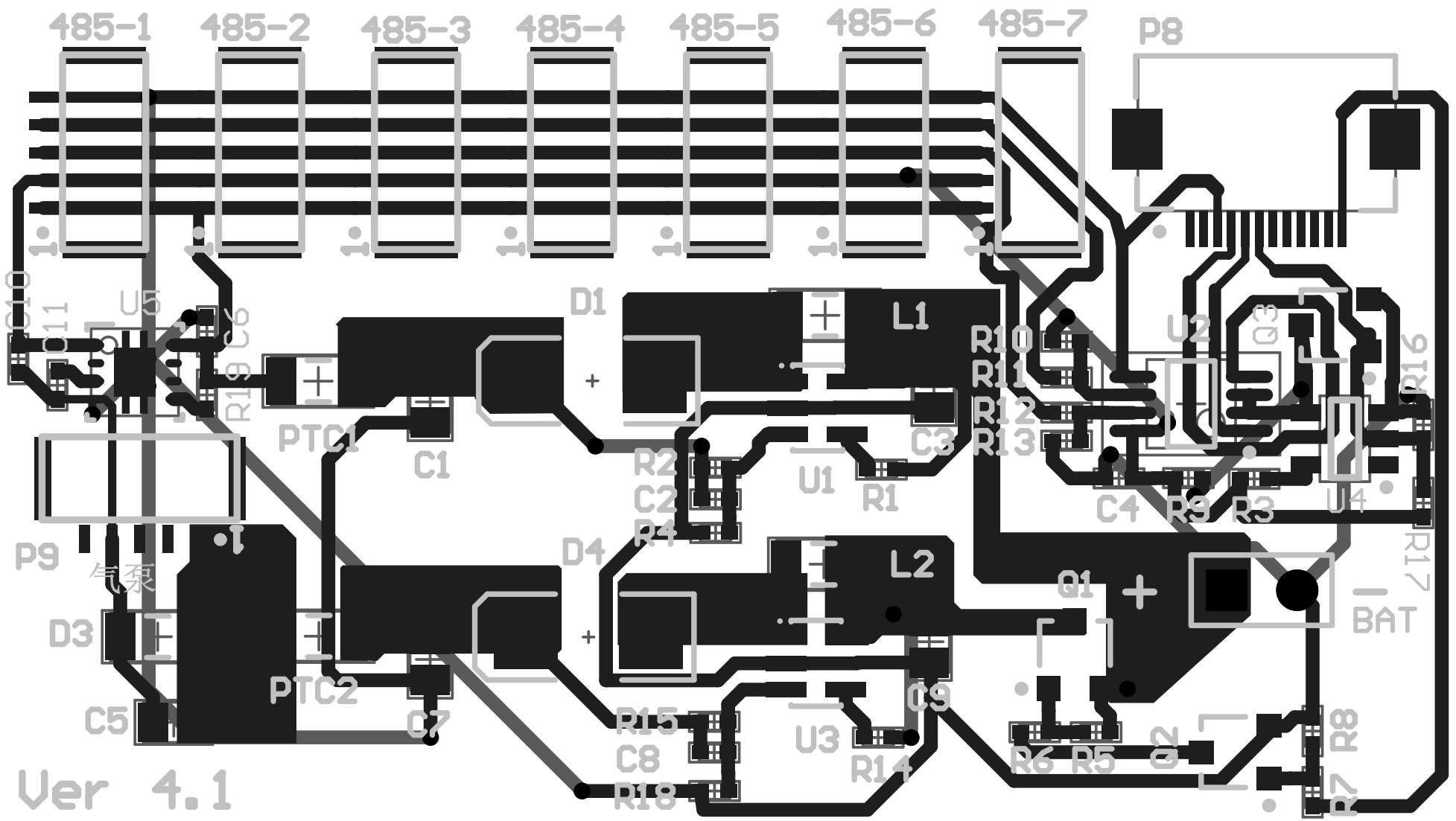


30.00



Ver 4.1

56.08

Comment	Description	Designator	Footprint	LibRef	Quantity
Cap	Capacitor	C1, C3, C5, C7, C9	C0805	Cap	5
Cap	Capacitor	C2, C4, C6, C8, C10, C11	0402	Cap	6
Diodes B320A	Schottky Diode	D1, D4	SMB	D Schottky	2
Diodes B320A	Schottky Diode	D3	C1206	D Schottky	1
Inductor	Inductor	L1, L2	C1206	Inductor	2
485-1	Header, 5-Pin	P1	SH1.0-5AWT-L	Header 5	1
485-2	Header, 5-Pin	P2	SH1.0-5AWT-L	Header 5	1
485-3	Header, 5-Pin	P3	SH1.0-5AWT-L	Header 5	1
485-4	Header, 5-Pin	P4	SH1.0-5AWT-L	Header 5	1
485-5	Header, 5-Pin	P5	SH1.0-5AWT-L	Header 5	1
485-6	Header, 5-Pin	P6	SH1.0-5AWT-L	Header 5	1
485-7	Header, 5-Pin	P7	SH1.0-5AWT-L	Header 5	1
主板	Header, 12-Pin	P8	FFC/SM0.5-2H30_R	MHDR1X12	1
气泵	Header, 5-Pin	P9	SH1.0-5AWT-L	Header 5	1
BAT	Header, 2-Pin	P10	HDR1X2	Header 2	1
6V 0.35A		PTC1, PTC2	C1206	RES	2
CJ2305	P-Channel MOSFET	Q1	SOT-23B	MOSFET-P	1
S8050	NPN General Purpose Amplifier	Q2	SOT-23B	2N3904	1
MOS		Q3	SOT-23B	N-MOS	1
Res2	Resistor	R1, R2, R3, R4, R5, R6, R7, R8, R9, R10, R11, R12, R13, R14, R15, R16, R17, R18	0402	Res2	18
R_TIA_AUX	Resistor	R19	0402	Res2	1
LMR62421	DC-DC	U1, U3	DBV005	LMR62421X	2
MAX3471	Low-Power, Slew-Rate-Limited RS-485/RS-422 Transceiver	U2	UMAX8_N	MAX485ESA	1
NotGate	逻辑门电路SOT23-5	U4	LC-SOT-23-5	Gate_Not	1
TPS73534	Imported	U5	DRB0008A	TPS73534DRBR	1