

# ***Applying External Phase Control Circuit for UCC28063***

Joy Cho

## **ABSTRACT**

Most power supplies are designed to focus on higher efficiency rating value at light-load operating conditions. Operating in phase mode, this circuit impacts the efficiency rating level for the PFC control circuit block. This document describes how to use an external phase control circuit to improve efficiency for the UCC28063 power factor correction (PFC) controller at light-load conditions.

## **Contents**

1	Introduction .....	2
2	Normal Theory of Phase Control UCC28063 Operation.....	2
3	Theory of Automatic Phase Control Operation .....	3
4	Phase Control Operation .....	4
5	Conclusion .....	7
6	Reference .....	7

## **List of Figures**

1	Original Automatic Phase Control Circuit With the UCC28063.....	3
2	Internal Block of Phase Control With the UCC28063 .....	3
3	External Phase Control Circuit With UCC28063 and UCC25600 .....	4
4	External Phase Control Circuit With the UCC28063 and UCC25600 .....	5
5	Waveform of Operating Single Phase (90 V <sub>AC</sub> ) .....	6
6	Waveform of Operating Dual Phase (90 V <sub>AC</sub> ) .....	6
7	Waveform of Operating Single Phase (264 V <sub>AC</sub> ).....	6
8	Waveform of Operating Dual Phase (264 V <sub>AC</sub> ).....	6
9	Temperature PFC FET of Operating Single Phase .....	7
10	Temperature PFC FET of Operating Dual Phase .....	7

## **List of Tables**

1	Phase With UCC28063 Modulator .....	2
2	Operating 13 V <sub>OUT</sub> Current Level of Phase Control of the UCC28063.....	5
3	Operating 13 V <sub>OUT</sub> Current Level of Phase Control of UCC28063.....	7

## **Trademarks**

All trademarks are the property of their respective owners.

## 1 Introduction

With the advantages of low audible noise, high efficiency, low ripple, and good electromagnetic interference (EMI) performance, the UCC28063 interleaved PFC controller is designed for end equipment and display applications in particular. In addition, most customers want higher efficiency in normal load conditions and light-load conditions. The UCC28063 has single- and dual-phase control, using the PHB pin. In some cases, however, the internal phase control is not accurate. In these cases, more suitable methods are necessary.

## 2 Normal Theory of Phase Control UCC28063 Operation

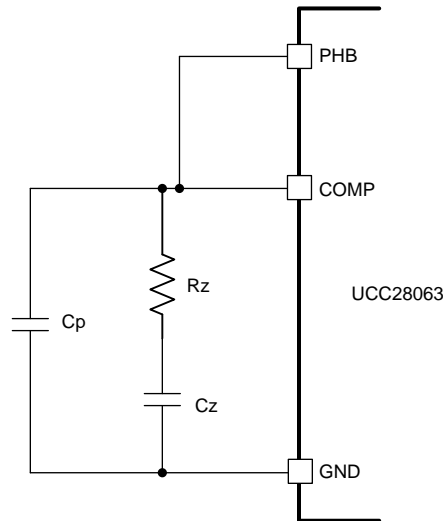
Under light-load conditions, switching losses may dominate over conduction losses, and efficiency may be improved if one phase (channel) is turned off. At a certain power level, the reduction of switching losses is greater than the increase in conduction losses. Turning off one phase at light load can help meet light-load efficiency standards. This process is one of the major benefits of interleaved PFC, and especially valuable for meeting more than 80 design requirements. The PHB input can be used to force the UCC28063 to operate in single-phase mode. When PHB is driven below 0.8 V, channel B stops switching, and channel A automatically doubles to compensate. The device resumes dual-phase mode when PHB is raised above 1 V. For customized phase management, an external circuit can detect the conditions for switching to single-phase operation, and drive PHB accordingly. To operate continuously in two-phase mode (normal mode) when phase management is not desired, connect PHB to VREF.

**Table 1. Phase With UCC28063 Modulator**

PARAMETER	TEST CONDITIONS	MIN	TYP	MAX	UNIT
$K_T$ On-time factor, phases A and B	VSENSE = 5.8 V	3.6	4	4.4	$\mu\text{s/V}$
$K_T$ On-time factor, single phase, A	VSENSE = 5.8 V, PHB = 0 V	7.2	8	8.9	
Phase B to phase A on-time matching error	VSENSE = 5.8 V		$\pm 2\%$	$\pm 6\%$	
$V_{PHBF}$ PHB threshold failing, to single phase operation	To GDB output shutdown, VINAC = 1.5 V	0.7	0.8	0.9	V
$V_{PHBR}$ PHB threshold failing, to two phase operation	To GDB output running, VINAC = 1.5 V	0.9	0.1	1.1	

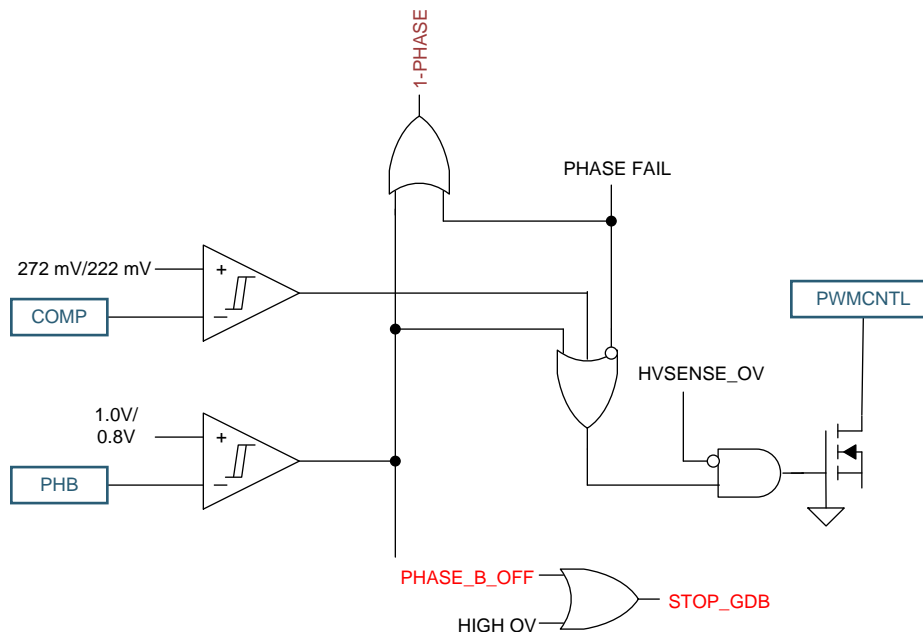
### 3 Theory of Automatic Phase Control Operation

Phase B may be shed through user control, or set up as an automatic light-load efficiency management feature. When the voltage applied to the PHB pin is below the VPHBF threshold, the Phase B and the phase fail detector are disabled. The commanded on-time for Phase A is doubled to minimize the output voltage transient, which would otherwise occur. Alternatively, PHB may be tied to the COMP pin for automatic phase shedding at light load.



Copyright © 2017, Texas Instruments Incorporated

**Figure 1. Original Automatic Phase Control Circuit With the UCC28063**



Copyright © 2017, Texas Instruments Incorporated

**Figure 2. Internal Block of Phase Control With the UCC28063**

## 4 Phase Control Operation

### 4.1 External Phase Mode Control Circuit of the UCC28063

Figure 3 shows an accurate phase-mode control of the PFC converter; adjust the phase control level using the external circuit at light-load conditions.

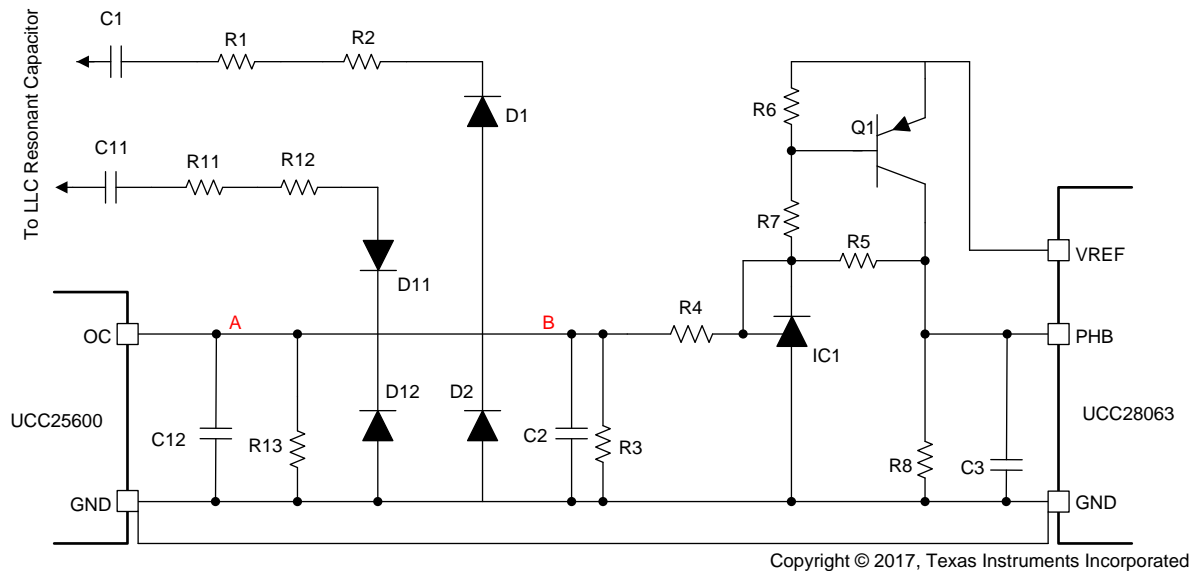


Figure 3. External Phase Control Circuit With UCC28063 and UCC25600

### 4.2 Detailed Operation for the External Phase Mode Control Circuit of the UCC28063

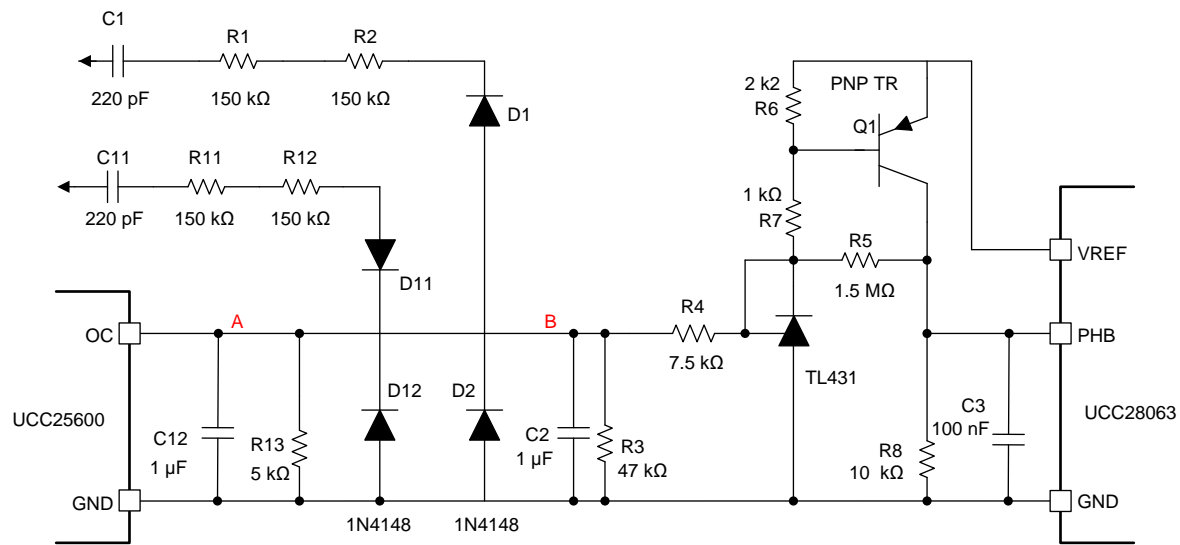
The original current-sensing network feeds into the LLC (C11, R11, R12, D11, D12, R13, and C12). A second current-sensing network feeds into the TL431 (C1, R1, R2, D1, D2, C2, and R3). This second network generates a higher voltage than the first, because  $R3 \gg R13$ . If the LLC current is high enough to generate more than 2.5 V across R3, then the TL431 turns on, and its cathode pulls low; this turns Q1 on and pulls the PHB pin high.

The UCC28063 operates in two phase modes if the PHB pin is high. As the LLC current reduces, the voltage across R3 also reduces. If the current reduces enough, the voltage across R3 will reduce below 2.5 V, the TL431 turns off, and its cathode current falls to zero. This turns Q1 off; PHB is then pulled low by R8. C3 provides noise filtering. Adding R5 and R4 provides some additional hysteresis in the operation of the TL431. This hysteresis increases the separation between the turn-on current and the turn-off current. For a more accurate threshold level, use a 2.5-V TL431 instead of a 1.25-V TL431.

The level of hysteresis can be changed by increasing or decreasing the value of R5. Increasing R5 reduces the level of hysteresis. R5 and R4 form a load in parallel with R3, thus the value of  $R5 + R4$  should be kept high to avoid loading the signal level across R3. The voltage at the reference input to the TL431 is not clamped in this circuit; current into the TL431 reference is limited by R4. The absolute maximum rating for this pin is 10 mA, which would require approximately 75 V across R3; however, this circuit will not reach that voltage.

### 4.3 Test Results for the External Phase Mode Control Circuit of the UCC28063

Figure 4 shows how to set the external circuit components values to optimize phase-shedding control with the UCC28063 and UCC25600. The testing power rating is  $P_{IN}$  250 W, and the  $V_{INAC}$  range is from 90 V<sub>AC</sub> to 264 V<sub>AC</sub>.



Copyright © 2017, Texas Instruments Incorporated

**Figure 4. External Phase Control Circuit With the UCC28063 and UCC25600**

Table 2 shows the current level value of single- and dual-phase operation, depending on input voltage conditions.

**Table 2. Operating 13 V<sub>OUT</sub> Current Level of Phase Control of the UCC28063**

V <sub>INAC</sub>	GDB off (A)	GDB on (A)
90	3.07	3.46
115	3.08	3.47
180	3.25	3.66
230	3.40	3.80
264	3.46	3.85

Figure 5 shows the waveform of operating in single phase (phase B off), and Figure 6 shows the waveform of operating in dual phase (phase B on) at 90 V<sub>AC</sub> conditions. Figure 7 shows the waveform of operating in single phase (phase B off), and Figure 8 shows the waveform of operating in dual phase (phase B on) at 264 V<sub>AC</sub> condition. According to these results, phase-shedding control circuit operates with more accuracy than a traditional circuit.

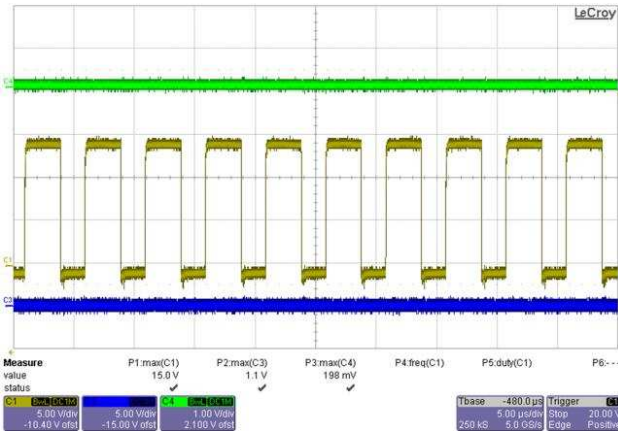


Figure 5. Waveform of Operating Single Phase (90 V<sub>AC</sub>)

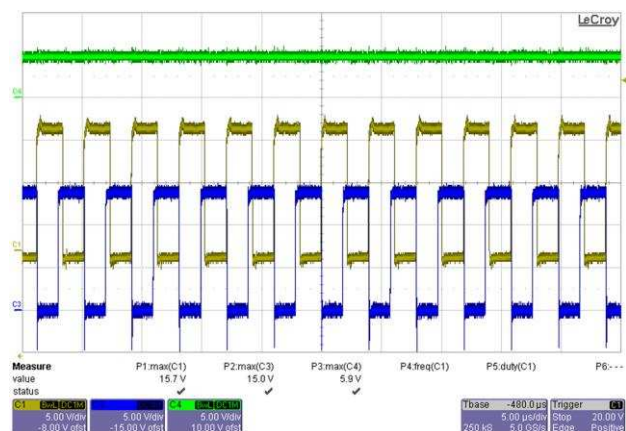


Figure 6. Waveform of Operating Dual Phase (90 V<sub>AC</sub>)

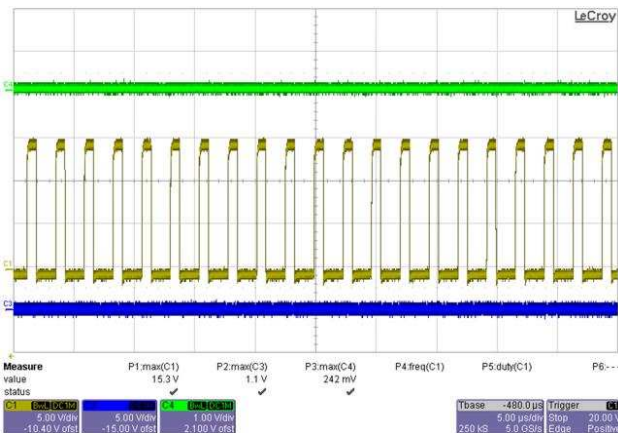


Figure 7. Waveform of Operating Single Phase (264 V<sub>AC</sub>)

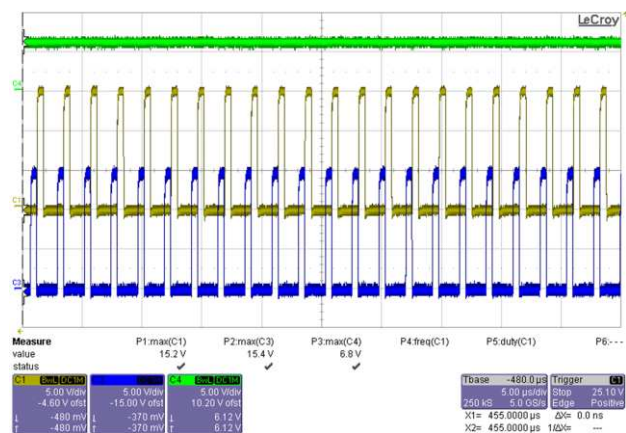


Figure 8. Waveform of Operating Dual Phase (264 V<sub>AC</sub>)

Figure 9 shows a temperature diagram of operating in single phase (phase B off), and Figure 10 shows a temperature diagram of operating in dual phase (phase B on) at  $P_{IN} = 50\text{-W}$  conditions.

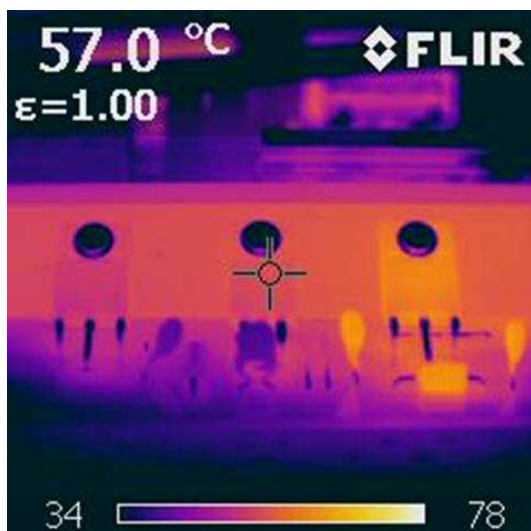


Figure 9. Temperature PFC FET of Operating Single Phase

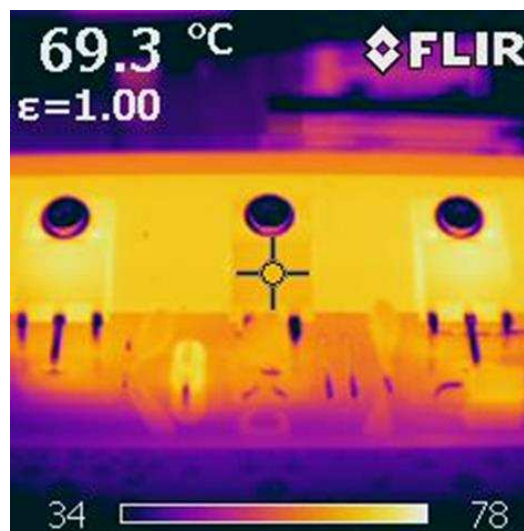


Figure 10. Temperature PFC FET of Operating Dual Phase

With good phase shedding control and an external circuit, Table 3 shows a decrease in temperature of PFC FET of approximately 12°C to 15°C.

Table 3. Operating 13 V<sub>OUT</sub> Current Level of Phase Control of UCC28063

Condition (PIN:50W)	GDB off (°C)	GDB on (°C)
FET_A	57.0	69.3
FET_B	57.3	72.5

## 5 Conclusion

For more accurate phase shedding control, the user requires a complex external phase-shedding control circuit instead of a traditional external circuit, using a comp pin base with various test results. This circuit operation is important to match component values and the threshold level between the PFC controller (UCC28063) and the LLC controller. Using this external phase-shedding circuit can achieve lower power dissipation at light-load conditions.

## 6 Reference

- UCC28063 Natural Interleaving™ Transition-Mode PFC Controller With Improved Audible Noise Immunity (SLUSA07)

## Revision History

NOTE: Page numbers for previous revisions may differ from page numbers in the current version.

Date	Revision	Description
October 2017	*	Initial Release



## IMPORTANT NOTICE FOR TI DESIGN INFORMATION AND RESOURCES

Texas Instruments Incorporated ("TI") technical, application or other design advice, services or information, including, but not limited to, reference designs and materials relating to evaluation modules, (collectively, "TI Resources") are intended to assist designers who are developing applications that incorporate TI products; by downloading, accessing or using any particular TI Resource in any way, you (individually or, if you are acting on behalf of a company, your company) agree to use it solely for this purpose and subject to the terms of this Notice.

TI's provision of TI Resources does not expand or otherwise alter TI's applicable published warranties or warranty disclaimers for TI products, and no additional obligations or liabilities arise from TI providing such TI Resources. TI reserves the right to make corrections, enhancements, improvements and other changes to its TI Resources.

You understand and agree that you remain responsible for using your independent analysis, evaluation and judgment in designing your applications and that you have full and exclusive responsibility to assure the safety of your applications and compliance of your applications (and of all TI products used in or for your applications) with all applicable regulations, laws and other applicable requirements. You represent that, with respect to your applications, you have all the necessary expertise to create and implement safeguards that (1) anticipate dangerous consequences of failures, (2) monitor failures and their consequences, and (3) lessen the likelihood of failures that might cause harm and take appropriate actions. You agree that prior to using or distributing any applications that include TI products, you will thoroughly test such applications and the functionality of such TI products as used in such applications. TI has not conducted any testing other than that specifically described in the published documentation for a particular TI Resource.

You are authorized to use, copy and modify any individual TI Resource only in connection with the development of applications that include the TI product(s) identified in such TI Resource. NO OTHER LICENSE, EXPRESS OR IMPLIED, BY ESTOPPEL OR OTHERWISE TO ANY OTHER TI INTELLECTUAL PROPERTY RIGHT, AND NO LICENSE TO ANY TECHNOLOGY OR INTELLECTUAL PROPERTY RIGHT OF TI OR ANY THIRD PARTY IS GRANTED HEREIN, including but not limited to any patent right, copyright, mask work right, or other intellectual property right relating to any combination, machine, or process in which TI products or services are used. Information regarding or referencing third-party products or services does not constitute a license to use such products or services, or a warranty or endorsement thereof. Use of TI Resources may require a license from a third party under the patents or other intellectual property of the third party, or a license from TI under the patents or other intellectual property of TI.

TI RESOURCES ARE PROVIDED "AS IS" AND WITH ALL FAULTS. TI DISCLAIMS ALL OTHER WARRANTIES OR REPRESENTATIONS, EXPRESS OR IMPLIED, REGARDING TI RESOURCES OR USE THEREOF, INCLUDING BUT NOT LIMITED TO ACCURACY OR COMPLETENESS, TITLE, ANY EPIDEMIC FAILURE WARRANTY AND ANY IMPLIED WARRANTIES OF MERCHANTABILITY, FITNESS FOR A PARTICULAR PURPOSE, AND NON-INFRINGEMENT OF ANY THIRD PARTY INTELLECTUAL PROPERTY RIGHTS.

TI SHALL NOT BE LIABLE FOR AND SHALL NOT DEFEND OR INDEMNIFY YOU AGAINST ANY CLAIM, INCLUDING BUT NOT LIMITED TO ANY INFRINGEMENT CLAIM THAT RELATES TO OR IS BASED ON ANY COMBINATION OF PRODUCTS EVEN IF DESCRIBED IN TI RESOURCES OR OTHERWISE. IN NO EVENT SHALL TI BE LIABLE FOR ANY ACTUAL, DIRECT, SPECIAL, COLLATERAL, INDIRECT, PUNITIVE, INCIDENTAL, CONSEQUENTIAL OR EXEMPLARY DAMAGES IN CONNECTION WITH OR ARISING OUT OF TI RESOURCES OR USE THEREOF, AND REGARDLESS OF WHETHER TI HAS BEEN ADVISED OF THE POSSIBILITY OF SUCH DAMAGES.

You agree to fully indemnify TI and its representatives against any damages, costs, losses, and/or liabilities arising out of your non-compliance with the terms and provisions of this Notice.

This Notice applies to TI Resources. Additional terms apply to the use and purchase of certain types of materials, TI products and services. These include; without limitation, TI's standard terms for semiconductor products (<http://www.ti.com/sc/docs/stdterms.htm>), [evaluation modules](#), and [samples](http://www.ti.com/sc/docs/sampterm.htm) (<http://www.ti.com/sc/docs/sampterm.htm>).

Mailing Address: Texas Instruments, Post Office Box 655303, Dallas, Texas 75265  
Copyright © 2017, Texas Instruments Incorporated