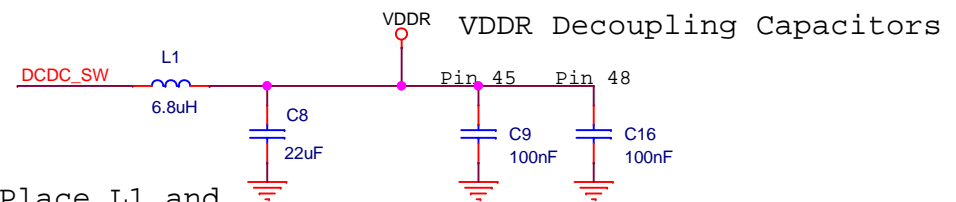
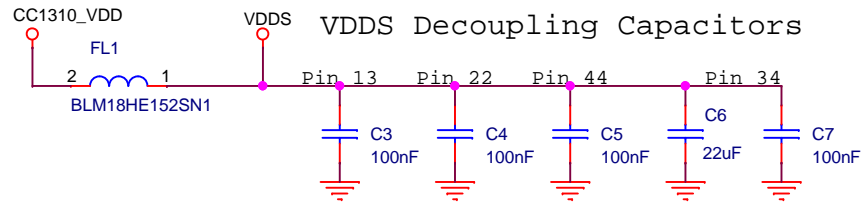
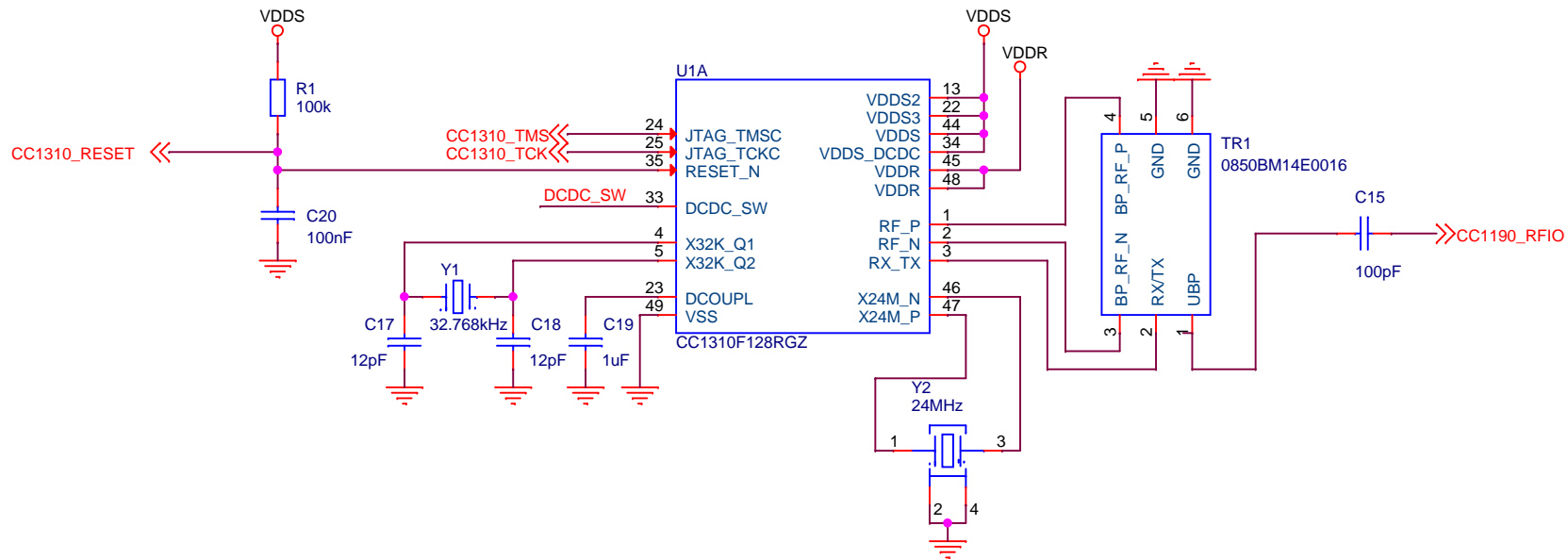


CC1310 RF




Place L1 and C8 close to pin 33



CC1190RF
placed on page 2.

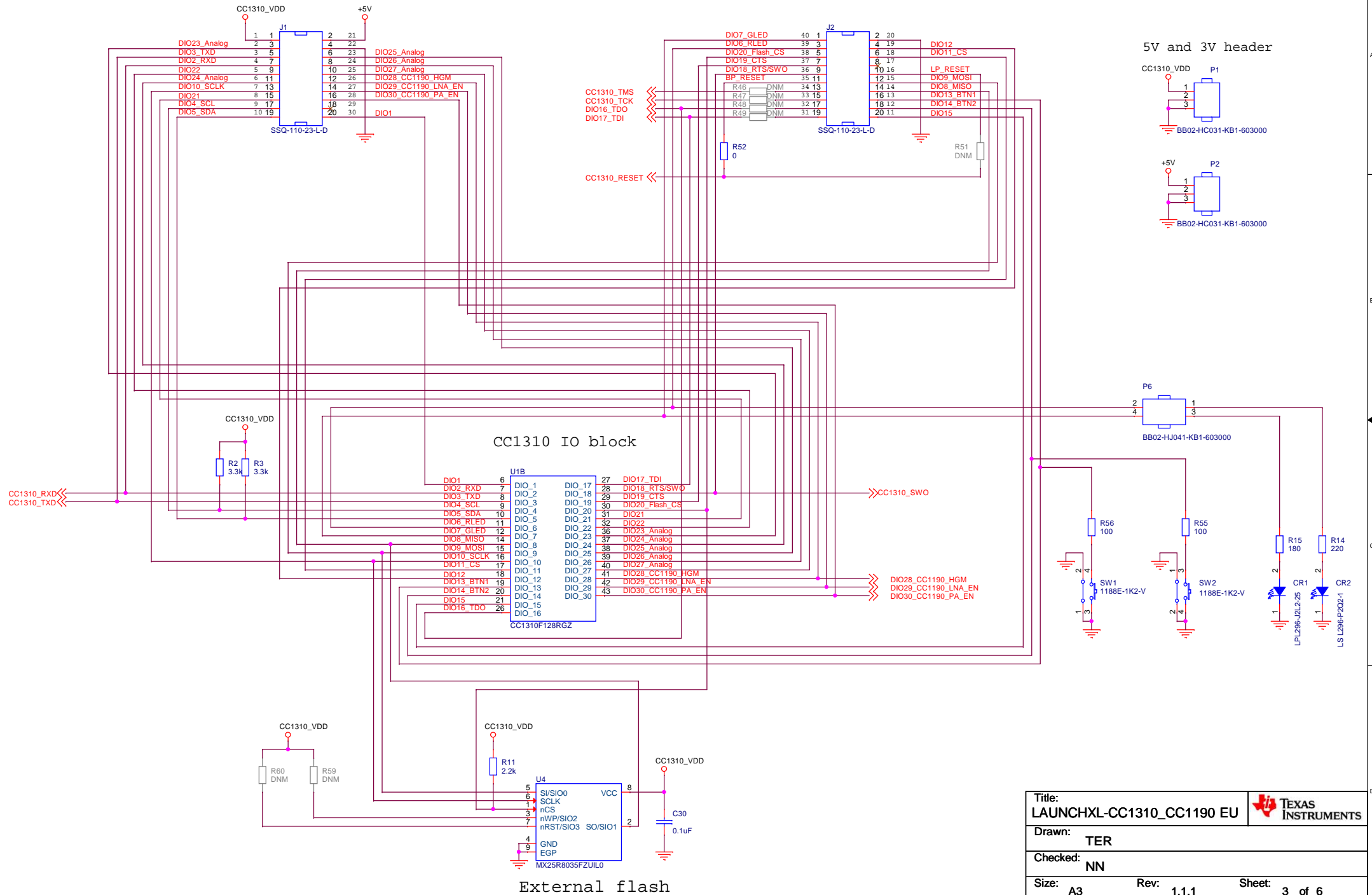
CC1310 IO block
placed on page 3.

Title: LAUNCHXL-CC1310_CC1190 EU		 TEXAS INSTRUMENTS	
Drawn: TER			
Checked: NN			
Size: A4	Rev: 1.1.1	Sheet: 1 of 6	
Date: Friday, January 13, 2017			

3

A

BoosterPack Headers and Peripherals



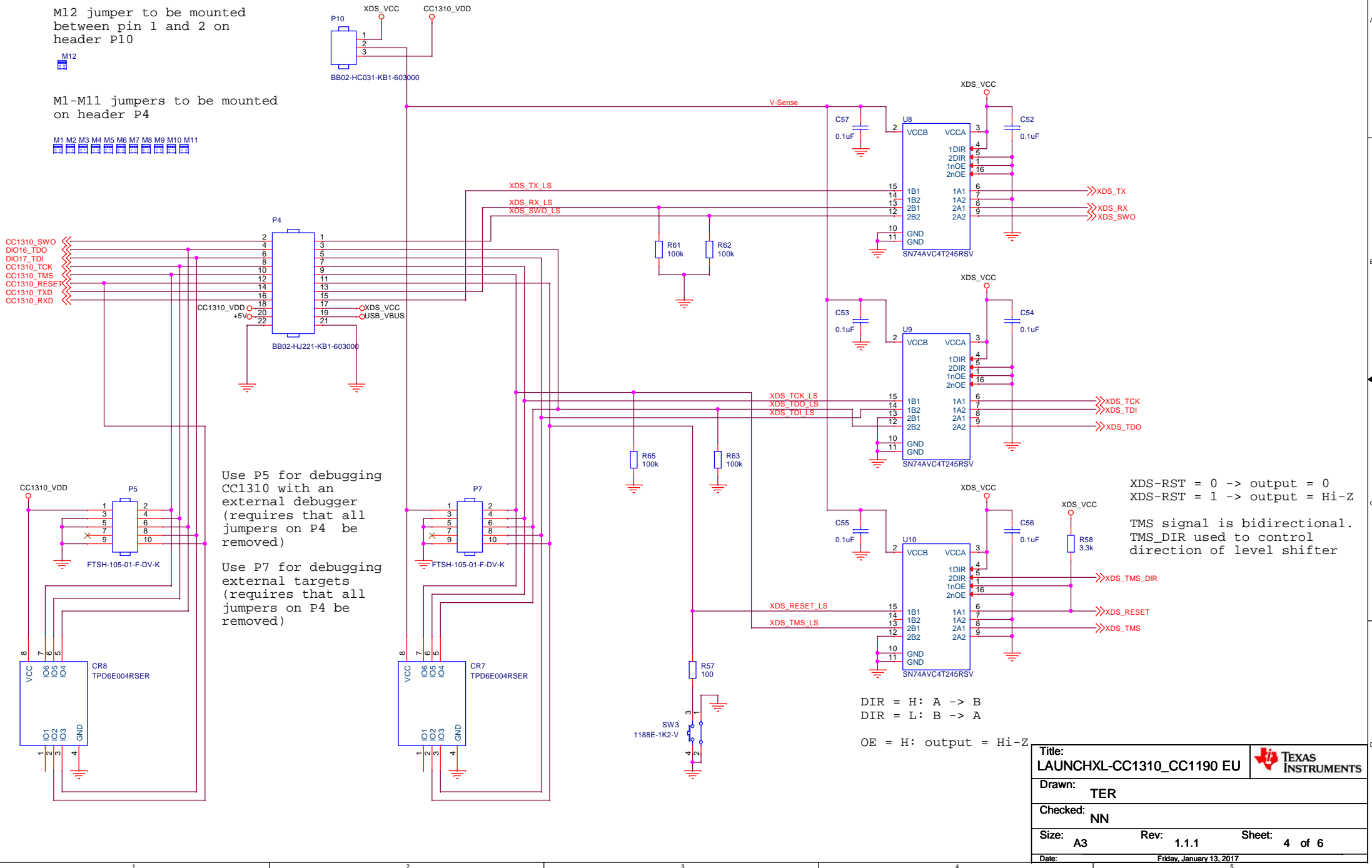
XDS110 Debugger Interface

P10 selects the voltage source for the level shifters
When powering CC1310 from the XDS supply, connect jumper between pins 1 and 2.
When powering CC1310 from the external supply, connect jumper between pins 2 and 3

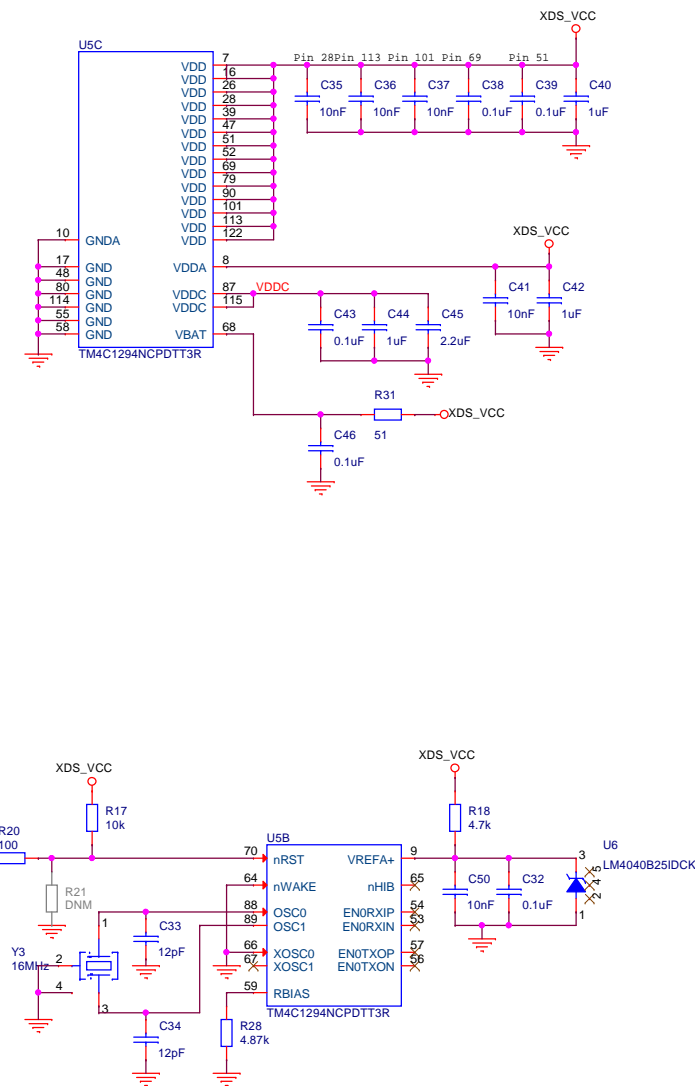
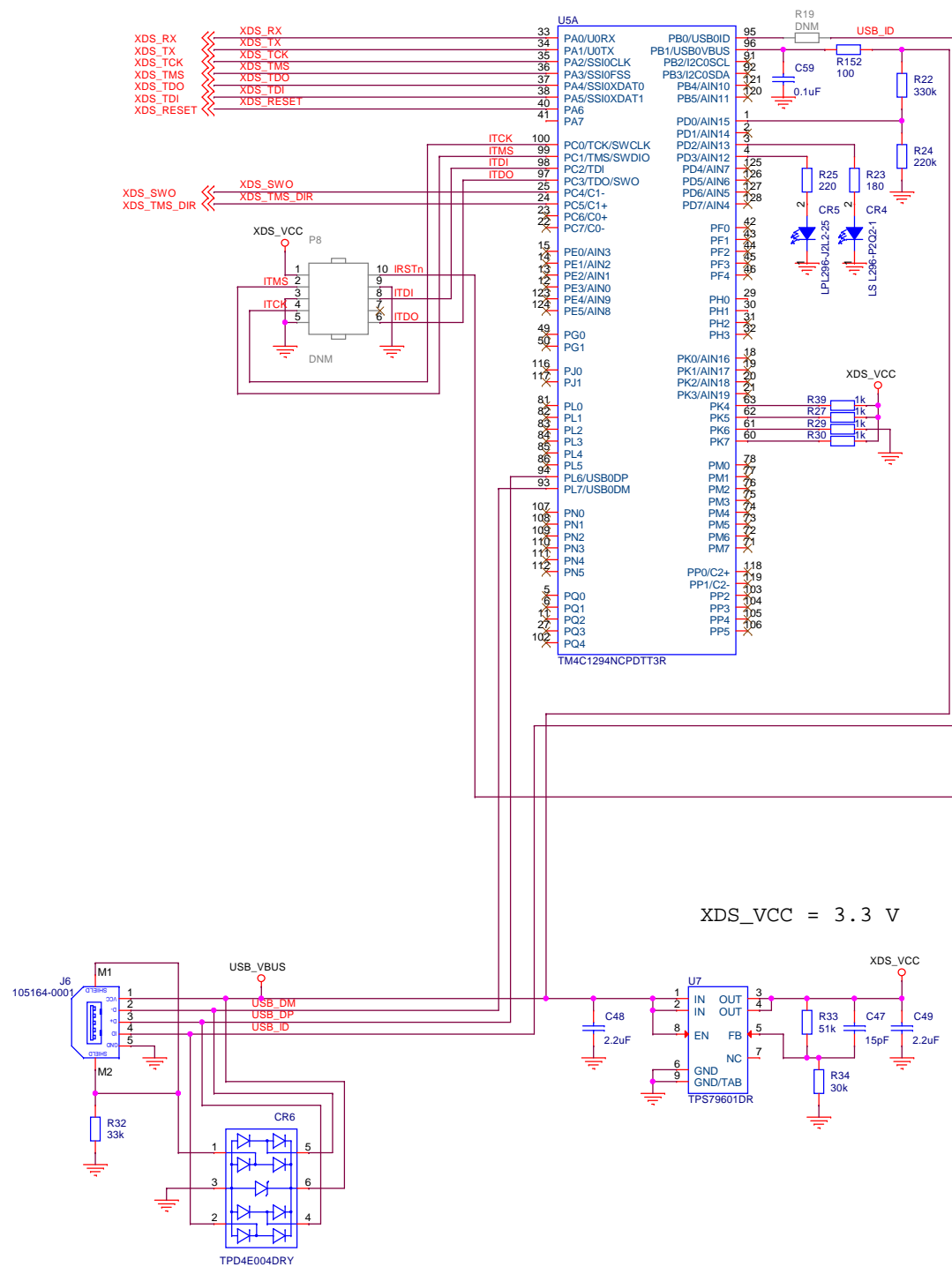
M12 jumper to be mounted
between pin 1 and 2 on
header P10


M1-M11 jumpers to be mounted
on header P4

M1 M2 M3 M4 M5 M6 M7 M8 M9 M10 M11



XDS110 Debugger



Title: LAUNCHXL-CC1310_CC1190 EU		 TEXAS INSTRUMENTS	
Drawn: TER			
Checked: NN			
Size: A3	Rev: 1.1.1	Sheet: 5	of 6
Date:		Friday, January 13, 2017	

Mech

LBL1



DNM

LBL2



DNM

FIDU1



FIDU2



FIDU3



FIDU4



FIDU5



FIDU6



MH1



DNM

MH2



DNM

MH3



DNM



MH4



DNM




MH5



DNM



Title: LAUNCHXL-CC1310_CC1190 EU		 TEXAS INSTRUMENTS	
Drawn: TER			
Checked: NN			
Size: A4	Rev: 1.1.1	Sheet: 6 of 6	
Date: Friday, January 13, 2017			