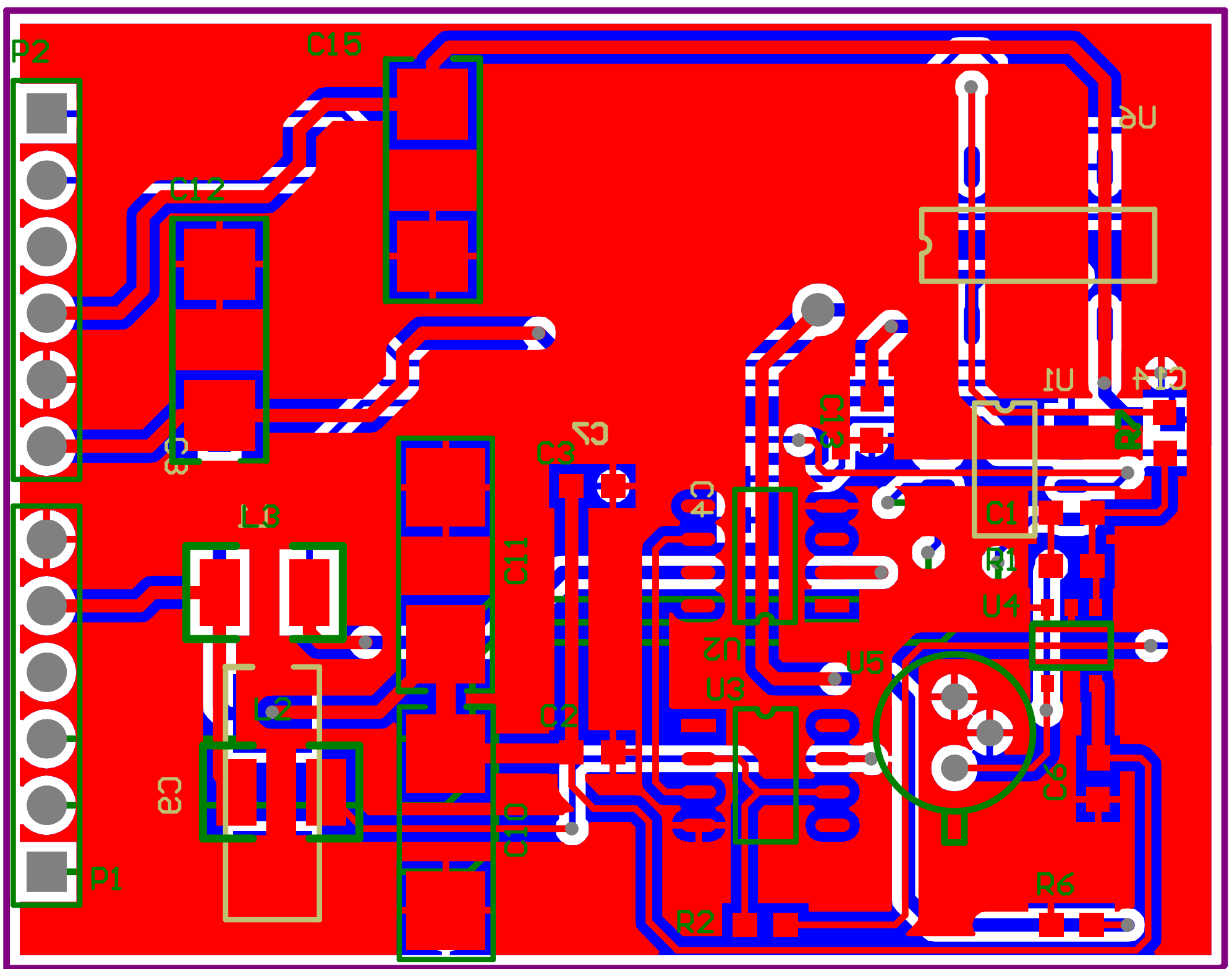


| Title | | |
|-------|------------------------------------|-----------|
| Size | Number | Revision |
| A4 | | |
| Date: | 2013-8-3 | Sheet of |
| File: | D:\Program Files\...\jiance.SchDoc | Drawn By: |



| Comment | Description | Designator | Footprint | LibRef | Quantity |
|-----------|---------------|-------------------------------------|-----------|------------|----------|
| 30pf | Capacitor | C1 | 0603 | CAP_1 | 1 |
| 104 | Capacitor | C2, C3, C4, C6, C7, C8, C13, C14 | 0603 | CAP, CAP_1 | 8 |
| 220UF | | C9, C10, C11, C12, C15 | D_cap | D_CAP | 5 |
| 100UH | | L1, L2, L3 | 1210 | INDUCTOR | 3 |
| Header 6 | Header, 6-Pin | P1, P2 | HDR1X6 | Header 6 | 2 |
| 2M | | R1 | 0603 | RES | 1 |
| 242 | | R2 | 0603 | RES | 1 |
| 0 | | R6 | 0603 | RES | 1 |
| 2k | | R7 | 0603 | RES | 1 |
| ADS1251 | | U1 | SOP8 | ADS1251 | 1 |
| ADR423 | | U2 | SOP8 | ADR423 | 1 |
| OP1177 | | U3 | SOP8 | OP2177 | 1 |
| AD8605ART | | U4 | DBV | B3A | 1 |
| 红外检测器 | Header, 3-Pin | U5 | >>GT101 | Header 3 | 1 |
| IVC102 | | U6 | IVC102 | IVC102 | 1 |