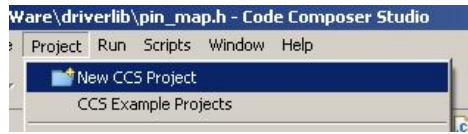


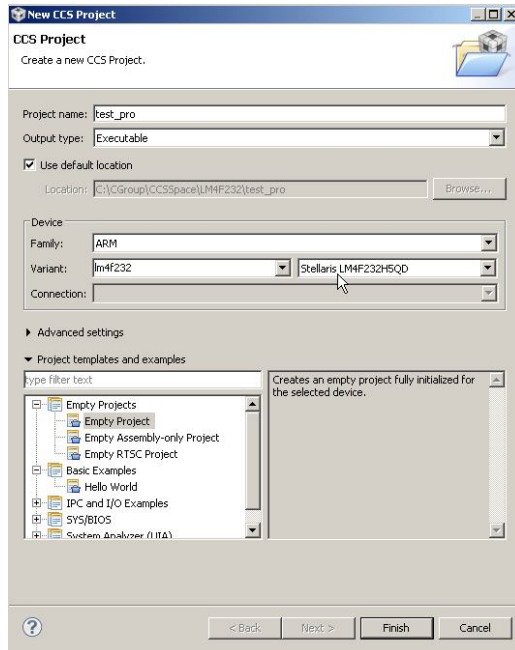
怎样使用 CCS5 创建新工程

Winston Wang

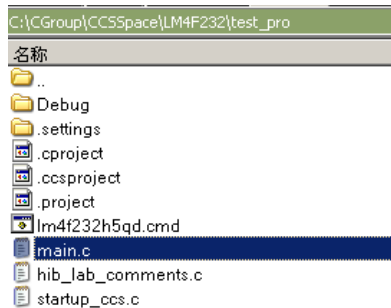
1> new ccs project launch



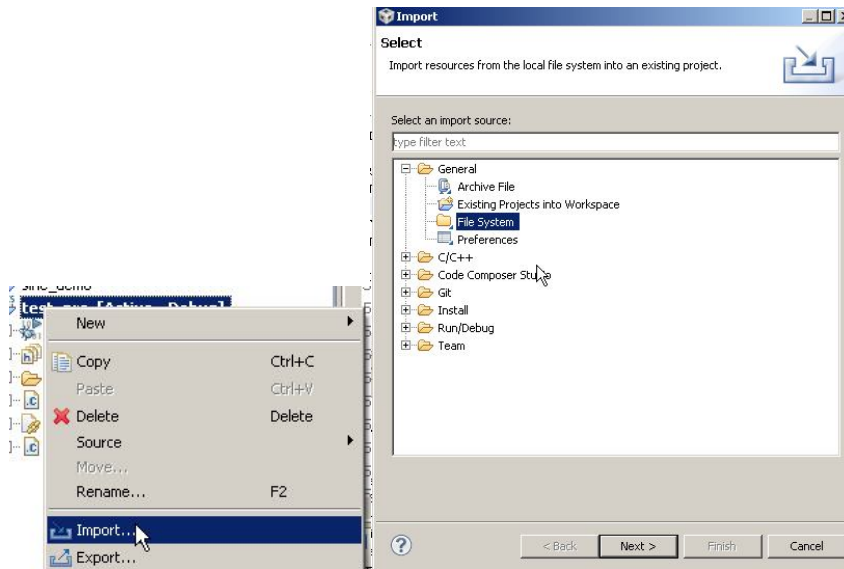
2> setup hardware system



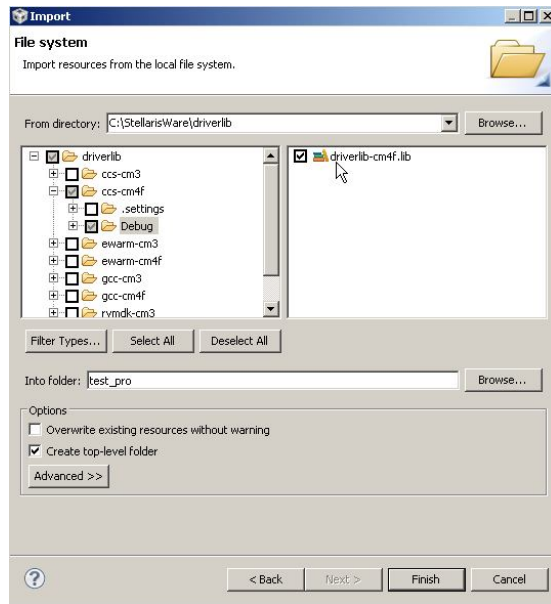
3> in project directory, delete the main.c file and add source files hib_lab_comments.c and startup_ccs.c



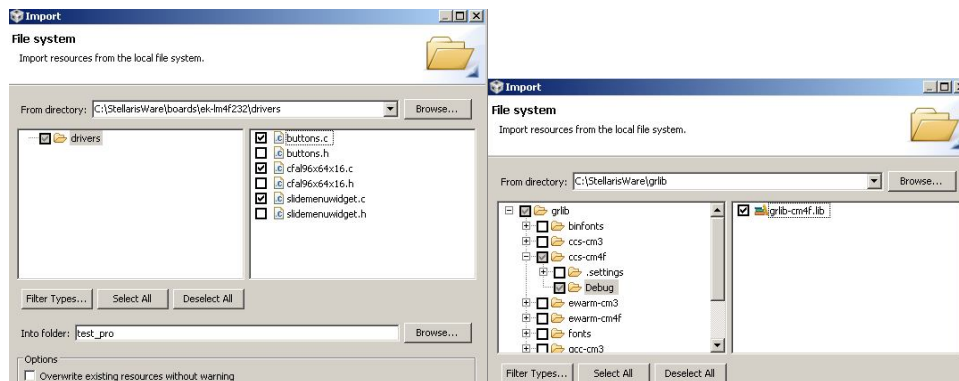
4> import other dependent files and select file system



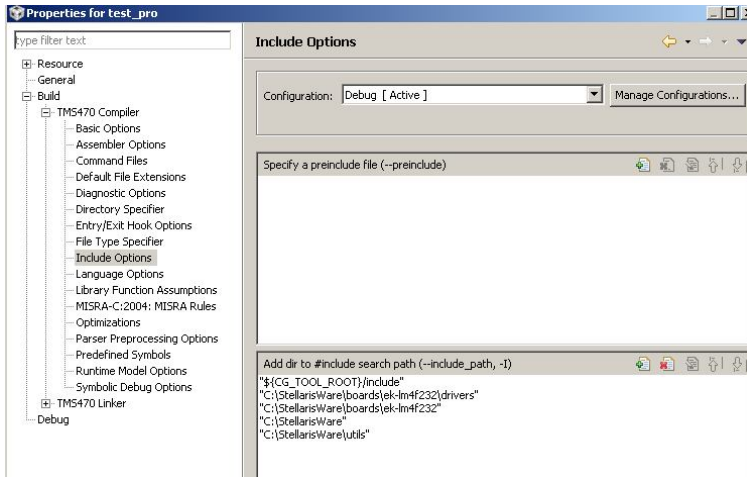
5> add driverlib.lib into project



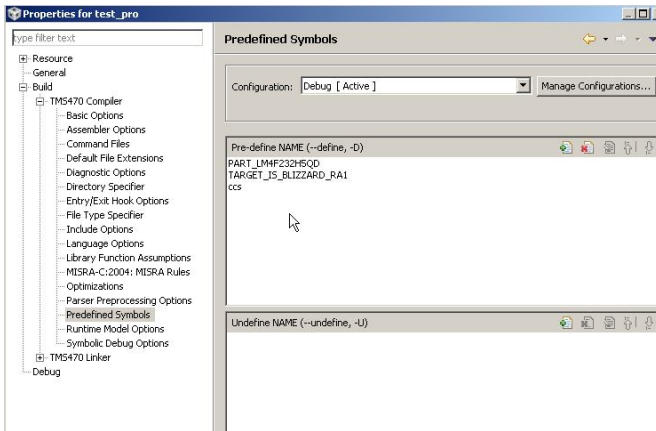
6> and so on for other dependent files.



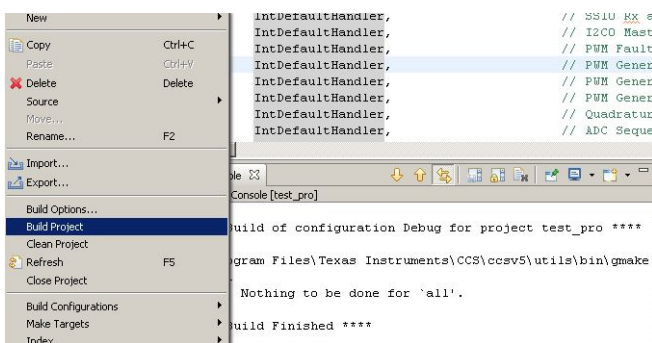
7> alt+enter, input the include path by copy from other project as below.



8> alt+enter, input the macro definition as below.



9> build project with successful tips as below.



10> connect the board and PC and F11 begin the debug progress.