

PWM电源控制器



(器件参数续上页)

Device	V _{REF} (V)	V _{REF} ToI. (%)	Max Duty Cycle (%)	Soft Start	E/A	Shut- down Pin	Voltage Feed- forward	Output Drive (Sink/Source) (A)	Slope Comp	Sync Pin	Leading Edge Blanking	Package(s)						Price*
												MSOP	SON	SSOP	TSSOP	HTSSOP-PowerPAD™	SOIC	
Green Mode Controllers and Offline Bias Regulators																		
UCC3581	4	1.5	Prog.	✓	—	✓	—	1/1	—	✓	—					14	14	1.00
UCC28600	—	—	99	✓	—	—	—	1/0.75	—	—	—					8		0.49
UCC3888/89	2.5	3	5.5	✓	—	—	✓	0.2/0.15	—	—	—					8	8	0.59
Intermediate Bus Controllers																		
UCC28230	5	1.5	99	✓	—	—	—	0.2/0.2	—	—	—	12	14					1.20
UCC28231	3.3	1.5	99	✓	—	—	—	0.2/0.3	—	—	—	12	14					1.20
General-Purpose Single-Ended Controllers																		
TL3842	5	2	100	—	✓	—	—	1/1	—	—	—					8/14	8	0.40
TL3842B	5	2	100	—	✓	—	—	1/1	—	—	—					8/14	8	0.54
TL3843	5	2	100	—	✓	—	—	1/1	—	—	—					8/14	8	0.40
TL3843B	5	2	100	—	✓	—	—	1/1	—	—	—					8/14	8	0.54
TL3844	5	2	50	—	✓	—	—	1/1	—	—	—					8/14	8	0.40
TL3844B	5	2	50	—	✓	—	—	1/1	—	—	—					8/14	8	0.54
TL3845	5	2	50	—	✓	—	—	1/1	—	—	—					8/14	8	0.40
TL3845B	5	2	50	—	✓	—	—	1/1	—	—	—					8/14	8	0.54
UC28023	5.1	1	Prog.	✓	✓	—	—	1.5/1.5	—	✓	—					16	16	1.35
UC3823	5.1	1	Prog.	✓	✓	—	✓	1.5/1.5	—	✓	—					16	20	1.60
UC3823A/B	5.1	1	Prog.	✓	✓	—	✓	2/2	—	✓	—					16	20	4.90
UC3842/A	5	1.5	100	—	✓	—	—	1/1	—	—	—					8/14	8	0.80
UC3843	5	1.5	100	—	✓	—	—	1/1	—	—	—					8/14	8	0.80
UC3843A	5	1.5	100	—	✓	—	—	1/1	—	—	—					8/14	8	0.80
UC3844/A	5	1.5	50	—	✓	—	—	1/1	—	—	—					8/14	8	0.80
UC3845	5	1.5	50	—	✓	—	—	1/1	—	—	—					8/14	8	0.80
UC3845A	5	1.5	50	—	✓	—	—	1/1	—	—	—					8/14	8	0.80
UC3849	5	2	Prog.	✓	✓	—	—	0.3/0.3	—	—	✓					24	28	3.05
UCC35705	—	—	93	—	—	—	✓	0.1/0.1	N/A	—	—	8				8	8	0.75
UCC35706	—	—	93	—	—	—	✓	0.1/0.1	N/A	—	—	8				8	8	0.75
UCC3800	5	1.5	100	✓	✓	—	—	1/1	—	—	100 ns			8		8	8	1.35
UCC3801	5	1.5	50	✓	✓	—	—	1/1	—	—	100 ns			8		8	8	1.35
UCC3802	5	1.5	100	✓	✓	—	—	1/1	—	—	100 ns			8		8	8	1.35
UCC3803	4	1.5	100	✓	✓	—	—	1/1	—	—	100 ns			8		8	8	1.35
UCC3804	5	1.5	50	✓	✓	—	—	1/1	—	—	100 ns			8		8	8	1.35
UCC3805	4	1.5	50	✓	✓	—	—	1/1	—	—	100 ns			8		8	8	1.35
UCC3807-1	2 (Int)	—	Prog.	✓	✓	—	—	1/1	—	—	100 ns					8	8	1.50
UCC3807-2	2 (Int)	—	Prog.	✓	✓	—	—	1/1	—	—	100 ns					8	8	1.50
UCC3807-3	2 (Int)	—	Prog.	✓	✓	—	—	1/1	—	—	100 ns					8	8	1.50
UCC3809-1	5	5	90	✓	—	✓	—	0.8/0.4	—	—	—	8		8		8	8	0.85
UCC3809-2	5	5	90	✓	—	✓	—	0.8/0.4	—	—	—	8		8		8	8	0.85
UCC3813-0/1/2/3/4/5	5 ¹	2	100 ¹	✓	✓	—	—	1/1	—	—	100 ns			8		8	8	0.80
UCC3884	5	2.5	100	✓	✓	—	✓	1/0.5	—	—	—					16	16	1.60
UCC38C40	5	2	100	—	✓	—	—	1/1	—	—	—	8				8	8	0.95
UCC38C41	5	2	50	—	✓	—	—	1/1	—	—	—	8				8	8	0.95
UCC38C42	5	2	100	—	✓	—	—	1/1	—	—	—	8				8	8	0.95

¹数值随编号后缀而改变。敬请查阅数据表。

注释：UC2xxx及UCC2xxx器件为UC3xxx及UCC3xxx器件的扩展温度范围版本。

* 建议零售价为每1000片批量的美元价格。

新器件以粗体红色标明。



PWM电源控制器

选择指南 (续)

(器件参数续下页)

Device	Typical Power Level (W)	Control Method			Topologies										Maximum Practical Frequency	Start-Up Current	Operating Current	Supply Voltage (V)	110-V Start-Up Circuit	UVLO: On/Off (V)			
		Voltage Mode	Current Mode	Avg. Current Mode	Buck	Boost	Flyback (SEPIC, Cuk)	Fwd (Including 2-Switch Fwd)	Forward (D > 50%)	Interleaved Fwd/Flyback/Boost	Act-Clamp Fwd/Flyback	Push-Pull	I-Fed/V-Fed Push-Pull	Half-Bridge							Full-Bridge	φ-Shifted FB	
General-Purpose Single-Ended Controllers (Continued)																							
UCC38C43	10 to 250	✓	✓		✓	✓	✓	✓										1 MHz	50 μA	2.3 mA	7.6 to 20	—	8.4/7.6
UCC38C44	10 to 250	✓	✓		✓	✓	✓	✓										1 MHz	50 μA	2.3 mA	9 to 20	—	14.5/9
UCC38C45	10 to 250	✓	✓		✓	✓	✓	✓										1 MHz	50 μA	2.3 mA	7.6 to 20	—	8.4/7.6
Wide-Input Range Voltage Mode Controllers																							
UCC3570	25 to 250	✓					✓	✓	✓									500 kHz	85 μA	1 mA	9.0 to 15	—	13.0/9
UCC35701	25 to 250	✓					✓	✓	✓									700 kHz	130 μA	750 μA	9.0 to 15	—	13.0/9
UCC35702	25 to 250	✓					✓	✓	✓									700 kHz	130 μA	750 μA	8.8 to 15	—	9.6/8.8
UCC35705	25 to 250	✓					✓	✓	✓	✓								4 MHz	50 μA	2.5 mA	8.2 to 15	—	8.8/8.2
UCC35706	25 to 250	✓					✓	✓	✓	✓								4 MHz	50 μA	2.5 mA	8.0 to 15	—	12/8
Dual Output Controllers																							
TL494	50 to 500	✓			✓	✓	✓	✓	✓	✓	✓	✓	✓	✓	✓	✓	✓	300 kHz	—	7.5 mA	7 to 40	—	—
TL594	50 to 500	✓			✓	✓	✓	✓	✓	✓	✓	✓	✓	✓	✓	✓	✓	300 kHz	—	12.4 mA	7 to 40	—	6.1/6
TL598	50 to 500	✓			✓	✓	✓	✓	✓	✓	✓	✓	✓	✓	✓	✓	✓	300 kHz	—	15 mA	7 to 40	—	6.1/6
SG3524	50 to 500	✓																450 kHz	—	—	8 to 40	—	—
UC28025	50 to 750	✓	✓															1 MHz	1.1 mA	22 mA	9 to 30	—	9.2/8.4
UC3524	50 to 500	✓																250 kHz	—	—	8 to 40	—	—
UC3524A	50 to 500	✓																250 kHz	4 mA	5 mA	8 to 40	—	7.5/7
UC3525A/B	50 to 500	✓																250 kHz	—	14 mA	8 to 40	—	7.0/7.0
UC3526A	50 to 500	✓																250 kHz	—	14 mA	8 to 35	—	—
UC3825	50 to 750	✓	✓															1 MHz	1.1 mA	22 mA	9 to 30	—	9.2/8.4
UC3825A/B	50 to 750	✓	✓															1 MHz	100 μA	28 mA	9 to 22	—	16/10/9.2/8.4
UC3827-1/-2	50 to 500	✓	✓															450 kHz	1000 μA	32 mA	8.4 to 20	—	9/8.4
UC3846	50 to 750	✓	✓															500 kHz	1.5 mA	17 mA	8 to 40	—	7.7/7
UC3856	50 to 750	✓	✓															1 MHz	1.5 mA	17 mA	8 to 40	—	7.7/7
UCC28089	25 to 250																	500 kHz	130 μA	1.4 mA	8 to 15	—	10.5/8.0
UCC28220	50 to 800		✓															1 MHz/ch.	200 μA	3 mA	8 to 14.5	—	10/8
UCC28221	50 to 800		✓															1 MHz/ch.	500 μA	3 mA	8 to 14.5	✓	13/8
UCC3806	50 to 750	✓	✓															350 kHz	100 μA	1.4 mA	7 to 15	—	7.5/6.7
UCC3808-1/-2/A-1/A-2	50 to 500		✓															1 MHz	130 μA	1 mA	4.3 to 15	—	12.5/8.3/4.3/4.1
UCC3808/3/4/5/6	50 to 500		✓															1 MHz	130 μA	20 mA	8.3 to 15	—	12.5/8.3
UCC3810	50 to 500	✓	✓		✓	✓	✓	✓	✓									1 MHz	150 μA	2 mA	8.3 to 11	—	11.3/8.3
Soft-Switching, ZVT and ZVS Controllers																							
UC3875/6/7	200 W to 2 kW	✓	✓	✓														1+ MHz	150 μA	45 mA	10.7 to 20	—	10.7/9.3/15/9
UC3879	200 W to 2 kW	✓	✓															500 kHz	150 μA	27 mA	11 to 20	—	15.2/9/10.7/9
UCC2891/2/3/4	75 to 600		✓															1 MHz	300 μA	2 mA	8.5 to 14.5	✓ ²	13/8.0
UCC2897	75 to 600		✓															1 MHz	300 μA	2 mA	8.5 to 14.5	✓	13/8.0
UCC3580-1/-2/-3/-4	50 to 500	✓																500 kHz	100 μA	1.5 mA	7 to 15	—	15/8.5/9.8/5
UCC3895	200 W to 2 kW	✓	✓	✓														1 MHz	150 μA	5 mA	11 to 17	—	11/9
Secondary-Side, Post Regulation																							
UC3824	50 to 250	✓	✓															1 MHz	1.1 mA	22 mA	9 to 30	—	9.2/8.4
UCC2540	50 to 500	✓			✓													1000 kHz	—	12 mA	2.8 to 36	—	—
UCC3580-1/-2/-3/-4	50 to 500	✓																500 kHz	100 μA	1.5 mA	7 to 15	—	15/8.5/9.8/5
UCC3583	50 to 500																	500 kHz	100 μA	3 mA	8.5 to 15	—	9/8.4
UCC3960	25 to 250	✓			✓	✓	✓	✓										400 kHz	150 μA	2.3 mA	8.0 to 19	—	9.5/10.5
UCC3961	25 to 250	✓			✓	✓	✓	✓										400 kHz	150 μA	2.3 mA	8.0 to 19	—	9.5/10.5

²UCC2891及UCC2893。 注释: UC2xxx及UCC2xxx器件为UC3xxx及UCC3xxx器件的扩展温度范围版本。



(器件参数续上页)

Device	V _{REF} (V)	V _{REF} Tol. (%)	Max Duty Cycle (%)	Soft Start	E/A	Shut- down Pin	Voltage Feed- forward	Output Drive (Sink/Source) (A)	Slope Comp	Sync Pin	Leading Edge Blanking	Package(s)							Price*	
												MSOP	SON	SSOP	TSSOP	HTSSOP-PowerPAD™	SOIC	SOIC-W (300 mil)		SOIC-W Power
General-Purpose Single-Ended Controllers (Continued)																				
UCC38C43	5	2	100	—	✓	—	—	1/1	—	—	—	8			8			8	0.95	
UCC38C44	5	2	50	—	✓	—	—	1/1	—	—	—	8			8			8	0.95	
UCC38C45	5	2	50	—	✓	—	—	1/1	—	—	—	8			8			8	0.95	
Wide-Input Range Voltage Mode Controllers																				
UCC3570	5	2	Prog.	✓	—	✓	✓	1.2/1.2	N/A	—	N/A				14			14	3.45	
UCC35701	5	1.5	VS Clamp	✓	—	✓	✓	1.2/1.2	N/A	✓	N/A			14	14			14	2.95	
UCC35702	5	1.5	VS Clamp	✓	—	✓	✓	1.2/1.2	N/A	✓	N/A			14	14			14	2.95	
UCC35705	—	—	93	—	—	—	✓	0.1/0.1	N/A	—	N/A	8			8			8	0.75	
UCC35706	—	—	93	—	—	—	✓	0.1/0.1	N/A	—	N/A	8			8			8	0.75	
Dual Output Controllers																				
TL494	5	5	45	—	✓	—	—	0.2/0.2	N/A	✓	—			16	16			16	0.23	
TL594	5	1	45	—	✓	—	—	0.2/0.2	N/A	✓	—			16	16			16	0.38	
TL598	5	1	45	—	✓	—	—	0.2/0.2	N/A	✓	—				16			16	0.81	
SG3524	5	4	45	—	✓	✓	—	0.1/0.1	N/A	✓	—				16			16	0.50	
UC28025	5.1	1	Prog.	✓	✓	—	—	1.5/1.5	—	✓	—				16			16	1.35	
UC3524	5	4	45	—	✓	✓	—	0.1/0.1	N/A	✓	—				16			16	0.85	
UC3524A	5	2	Prog.	✓	✓	✓	—	0.2/0.2	—	✓	—				16			16	1.70	
UC3525A/B	5	2	Prog.	✓	✓	✓	—	0.2/0.2	—	✓	—				16		20	16	1.05	
UC3526A	5.1	1.3	Prog.	✓	✓	✓	—	0.2/0.2	—	✓	—				16		20	16	1.05	
UC3825	5.1	1	Prog.	✓	✓	—	—	1.5/1.5	—	✓	—				16	20	16	16	1.60	
UC3825A/B	5.1	1.5	Prog.	✓	✓	—	—	2/2	—	✓	—				16	20	16	20	2.65	
UC3827-1/-2	5	4	—	✓	✓	—	—	1/0.8	—	✓	—				24	28	24	24	3.50	
UC3846	5	2	Prog.	✓	✓	—	—	0.5/0.5	—	✓	—				16	20	16	20	1.60	
UC3856	5	2	Prog.	✓	✓	—	—	0.5/0.5	—	✓	—				16	20	16	20	1.70	
UCC28089	—	—	50	✓	—	—	—	0.5/1.0	—	✓	—				8				0.65	
UCC28220	3.3	4.5	Prog.	✓	—	—	—	0.01/0.01	Prog.	—	—			16	16				1.60	
UCC28221	3.3	4.5	Prog.	✓	—	—	—	0.01/0.01	Prog.	—	—			20	16				1.65	
UCC3806	5.1	3	Prog.	✓	✓	✓	—	0.5/0.5	—	✓	—			16	16	16	16	20	16	4.10
UCC3808-1/-2/A-1/A-2	—	—	Prog.	✓	✓	—	—	1.0/0.5	—	✓	—			8	8			8	1.30	
UCC38083/4/5/6	5	2	50	✓	—	—	—	1.0/0.5	Prog.	—	—			8	8			8	1.10	
UCC3810	5	2	50	—	✓	✓	—	1/1	—	✓	—				16			16	1.85	
Soft-Switching, ZVT and ZVS Controllers																				
UC3875-8	5	2	Prog.	✓	✓	—	—	Four @ 2/2	—	✓	—					20	28	20	4.85	
UC3879	5	2.5	Prog.	✓	✓	—	—	Four @ 0.1/0.1	—	✓	—					20	28	20	3.70	
UCC2891/2/3/4	5	1	Prog.	✓	—	✓	—	2/2, 2/2	Prog.	✓	—			16	16				1.50	
UCC2897	5	1	Prog.	✓	—	✓	—	2/2, 2/2	Prog.	✓	—			20	16				1.50	
UCC3580-1/-2/-3/-4	5	1	Prog.	✓	✓	✓	✓	0.5/1, 0.3/0.3	—	—	—				16			16	2.40	
UCC3895	5	3	Prog.	✓	✓	✓	—	Four @ 0.1/0.1	—	✓	—				20	20	20	20	4.35	
Secondary-Side, Post Regulation																				
UC3824	5.1	1	Prog.	✓	✓	—	—	1.5/1.5	—	✓	—				16			16	4.55	
UCC2540	3.3	0.6	100	✓	✓	—	—	3/3	—	✓	—			20					1.85	
UCC3580-1/-2/-3/-4	5	1	Prog.	✓	✓	✓	✓	0.5/1, 0.3/0.3	—	—	—				16			16	1.90	
UCC3583	5	1.5	9.5	✓	✓	—	—	0.5/1.5	—	✓	—				14		20	14	1.75	
UCC3960	—	—	72	✓	—	—	—	0.75/1.5	—	—	—				8			8	0.95	
UCC3961	—	—	72	✓	—	—	—	0.75/1.5	—	—	—				14			14	1.05	

注释: UC2xxx及UCC2xxx器件为UC3xxx及UCC3xxx器件的扩展温度范围版本。 * 建议零售价为每1000片批量的美元价格。



MOSFET驱动器

设计因素

电源电压范围—— 内置了电压稳压器后，MOSFET驱动器能工作于更宽的输入电压范围，使其更灵活的适用于各类应用。

输出端口数量—— 可选用单路或双路的输出驱动器，以补足 DC/DC 开关及电机控制应用的需要。

输出配置—— 可选择反向(Inverting)、同向(noninverting)、AND以及NAND配置方式。

TrueDrive™ 输出级—— TrueDrive输出架构被用于TI的大电流门驱动器及控制器上，其输出架构采用了双极型晶体管及CMOS晶体管并联的形式构建。TrueDrive 技术在最需要的区域（在MOSFET管的米勒平坦[Miller plateau]区前端）给出了大电流输出并提供了转换效率增益。

预测门驱动(Predictive Gate Drive™)技术—— TI的此项专利技术是一类数字控制手法，用以控制高效率、低输出电压同步降压转换器的延迟时间。如需完备的相关描述资料，敬请参见我们所提供的有关预测门驱动技术的应用手册。

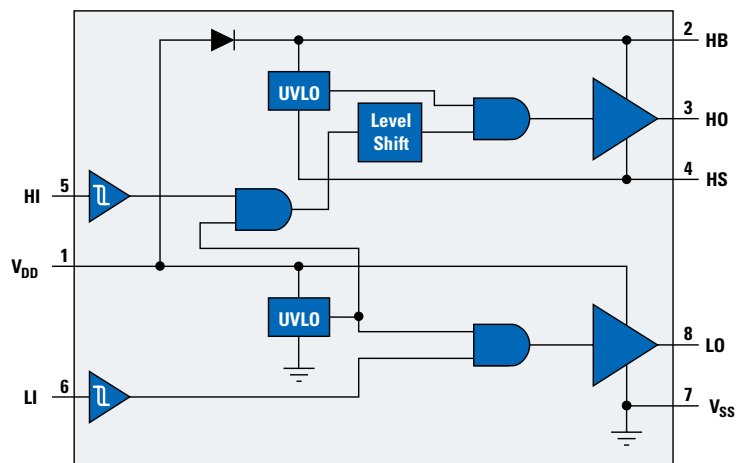
120V 双MOSFET高侧、低侧驱动器

UCC27200、UCC27201

敬请访问www.ti.com/sc/device/UCC27200 或 www.ti.com/sc/device/UCC27201，以获取样片、数据表及应用报告。

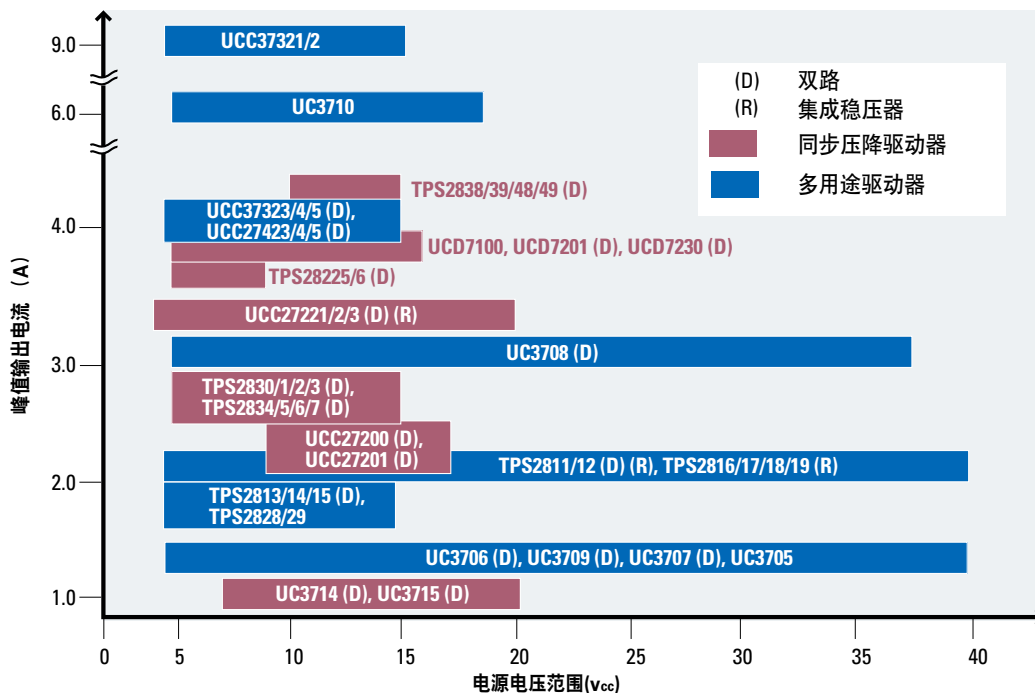
主要特点

- 在高侧、低侧配置时驱动两个N道沟 MOSFET
- 启动电压绝对峰值：120V
- 片置0.65V VF、0.6-Ω RD 阴极负载二极管(bootstrap diode)
- 工作频率可高达1MHz
- 典型传播延迟：20ns
- 2.5A 吸收(sink)、2A 馈送(source)输出电流
- 1000pF 负载时，上升 10ns 时间，下降时间 8ns
- 2ns典型延迟匹配
- 封装模式：SOIC-8 封装、PowerPAD™ SOIC-8 封装以及空间节省型DFN封装（均为无铅封装）



UCC27200/01方框图

MOSFET驱动器产品系列





选择指南

Device	No. of Outputs	Output Configuration	Output Type ¹	Peak I _{OUT} Source/Sink (A)	Rise/Fall Time (ns)	V _{CC} Range (V)	Prop Delay (ns)	Input Threshold	Enable	Dead Time Control	Protection Features ²	Internal Regulator	Price*
General-Purpose Low-Side Drivers													
TPS2811	2	Inverting	TrueDrive™	2.0/2.0	25/25	4 to 40	40	CMOS	—	—	—	✓	0.90
TPS2812	2	Non-inverting	TrueDrive	2.0/2.0	25/25	4 to 40	40	CMOS	—	—	—	✓	0.90
TPS2813	2	See Note 3	TrueDrive	2.0/2.0	25/25	4 to 14	40	CMOS	—	—	—	✓	0.90
TPS2814	2	Dual 2-input AND; one inverting	TrueDrive	2.0/2.0	25/25	4 to 14	40	CMOS	—	—	—	—	0.90
TPS2815	2	2-input NAND	TrueDrive	2.0/2.0	25/25	4 to 14	40	CMOS	✓	N/A	—	—	0.90
TPS2816	1	Inverting	TrueDrive	2.0/2.0	25/25	4 to 40	40	CMOS	—	N/A	—	✓	0.65
TPS2817	1	Non-inverting	TrueDrive	2.0/2.0	25/25	4 to 40	40	CMOS	—	N/A	—	✓	0.65
TPS2818	1	Inverting	TrueDrive	2.0/2.0	25/25	4 to 40	40	CMOS	—	N/A	—	✓	0.65
TPS2819	1	Non-inverting	TrueDrive	2.0/2.0	25/25	4 to 40	40	CMOS	—	N/A	—	✓	0.65
TPS2828	1	Inverting	TrueDrive	2.0/2.0	25/25	4 to 14	40	CMOS	—	N/A	—	—	0.60
TPS2829	1	Non-inverting	TrueDrive	2.0/2.0	25/25	4 to 14	40	CMOS	—	N/A	—	—	0.60
UC3714	2	Non-inverting	Bipolar	0.5/1.0	30/25	7 to 20	50	TTL/PWM	✓	Adj.	—	—	0.95
UC3715	2	See Note 3	Bipolar	1.0/2.0	30/25	7 to 20	50	TTL/PWM	✓	Adj.	—	—	0.90
UCC27323	2	Inverting	TrueDrive	4.0/4.0	25/25	4 to 15	35	TTL/CMOS	—	—	—	—	0.80
UCC27324	2	Non-inverting	TrueDrive	4.0/4.0	25/25	4 to 15	35	TTL/CMOS	—	—	—	—	0.80
UCC27325	2	See Note 3	TrueDrive	4.0/4.0	25/25	4 to 15	35	TTL/CMOS	—	—	—	—	0.80
UCC27423	2	Inverting	TrueDrive	4.0/4.0	25/25	4 to 15	35	TTL/CMOS	✓	—	—	—	0.85
UCC27424	2	Non-inverting	TrueDrive	4.0/4.0	25/25	4 to 15	35	TTL/CMOS	✓	—	—	—	0.85
UCC27425	2	See Note 3	TrueDrive	4.0/4.0	25/25	4 to 15	35	TTL/CMOS	✓	—	—	—	0.85
UCC37321	1	Inverting	TrueDrive	9/9	20/20	4 to 15	30	TTL/CMOS	✓	—	—	—	0.99
UCC37322	1	Non-inverting	TrueDrive	9/9	20/20	4 to 15	30	TTL/CMOS	✓	—	—	—	0.99
UCD7100PWP	1	Uncommitted/Non-inverting	TrueDrive	4/4	10/10	4.5 to 16	20	CMOS/TTL	—	Adaptive	—	—	0.99
UCD7201PWP	2	Uncommitted/Non-inverting	TrueDrive	4/4	10/10	4.5 to 16	20	CMOS/TTL	—	Adaptive	—	—	1.20
Synchronous Buck Drivers													
TPS28225	2	Non-inverting	CMOS	2.0/4.0	10/10	4.5 to 8.8	14	TTL/CMOS	✓	Adaptive	UVLO	—	0.60
TPS28226	2	Non-inverting	CMOS	2.0/4.0	10/10	4.5 to 8.8	14	TTL/CMOS	✓	Adaptive	UVLO	—	0.60
TPS2830	2	Non-inverting	TrueDrive	2.4/2.4	50/50	4.5 to 15	75	CMOS	✓	Adaptive	OVPC	—	1.05
TPS2831	2	Inverting	TrueDrive	2.4/2.4	50/50	4.5 to 15	75	CMOS	✓	Adaptive	OVPC	—	1.05
TPS2832	2	Non-inverting	TrueDrive	2.4/2.4	50/50	4.5 to 15	75	CMOS	—	Adaptive	—	—	1.00
TPS2833	2	Inverting	TrueDrive	2.4/2.4	50/50	4.5 to 15	75	CMOS	—	Adaptive	—	—	1.00
TPS2834	2	Non-inverting	TrueDrive	2.4/2.4	30/30	4.5 to 15	70	TTL	✓	Adaptive	OVPC	—	1.05
TPS2835	2	Inverting	TrueDrive	2.4/2.4	30/30	4.5 to 15	70	TTL	✓	Adaptive	OVPC	—	1.05
TPS2836	2	Non-inverting	TrueDrive	2.4/2.4	30/30	4.5 to 15	70	TTL	—	Adaptive	—	—	1.25
TPS2837	2	Inverting	TrueDrive	2.4/2.4	30/30	4.5 to 15	70	TTL	—	Adaptive	—	—	1.25
TPS2838	2	Non-inverting	TrueDrive	4/4	120	10 to 15	40	TTL	✓	Adaptive	—	✓	1.30
TPS2839	2	Inverting	TrueDrive	4/4	120	10 to 15	40	TTL	✓	Adaptive	—	✓	1.30
TPS2848	2	Non-inverting	TrueDrive	4/4	120	10 to 15	20	TTL	✓	Adaptive	—	✓	1.25
TPS2849	2	Inverting	TrueDrive	4/4	120	10 to 15	20	TTL	✓	Adaptive	—	✓	1.25
UCC27221	2	Inverting	TrueDrive	3.3/3.3	20/20	3.7 to 20	82/103	TTL	—	PGD ⁴	—	✓	1.35
UCC27222	2	Non-inverting	TrueDrive	3.3/3.3	20/20	3.7 to 20	82/103	TTL	—	PGD ⁴	—	✓	1.35
UCC27223	2	Non-inverting	TrueDrive	3.3/3.3	25/35	4.15 to 20	82/103	TTL	✓	PGD ⁴	—	✓	1.35
UCD7230	2	Non-inverting	CMOS	4/4	10/10	4.5 to 15.5	25	CMOS/TTL	—	Adaptive	Adjustable	—	0.80
High-Side Low-Side Drivers—Half Bridge, Full Bridge													
UCC27200	2	Non-inverting	TrueDrive	3/3	10/8	to 110 ⁵	20	CMOS	—	N/A	UVLO	—	1.30
UCC27201	2	Non-inverting	TrueDrive	3/3	10/8	to 110 ⁵	20	TTL	—	N/A	UVLO	—	1.30

¹输出类型: TrueDrive采用了双极型及CMOS混合的输出架构, 可用于改善低电压状况下的电流驱动能力(于米勒前端)。

²OCP = 过电流保护; OVPC = 过电压保护跨接器(crowbar)。

* 建议零售价为每1000片批量的美元价格。

³一路反向(inverting), 一路同向(non-inverting)。

⁴Predictive Gate Drive™。

⁵最大启动电压施加于HS引脚。

新器件以粗体红色标明。



设计因素

嵌入式电源解决方案为板上安装型、全集成的DC/DC转换器，仅需要一或两个外部元件。

输入电压(V_{IN})—— 嵌入式电源解决方案设计工作于工业标准的直流总线电压。

输出电流(I_{OUT})—— 转换器的输出电流 I_{OUT} 应匹配您的应用所需的最大电流。

输出电压(V_{OUT})—— 选择满足您需求的可调节或固定的输出电压 V_{OUT} 。

隔离—— 带电子输入至输出端隔离的转换器通常更为复杂且更加昂贵。

特点—— TurboTrans™ (增压转换)、SmartSync (智能同步)、可调节输出电压 V_{OUT} 、远程感应、过热、过电流及输出抑制(output inhibit)是其众多特点的一部分。

通风需求—— 转换器的最大电流通常取决于通风。安全工作区域(SOA)曲线决定了转换器在特定电流下的通风需求。

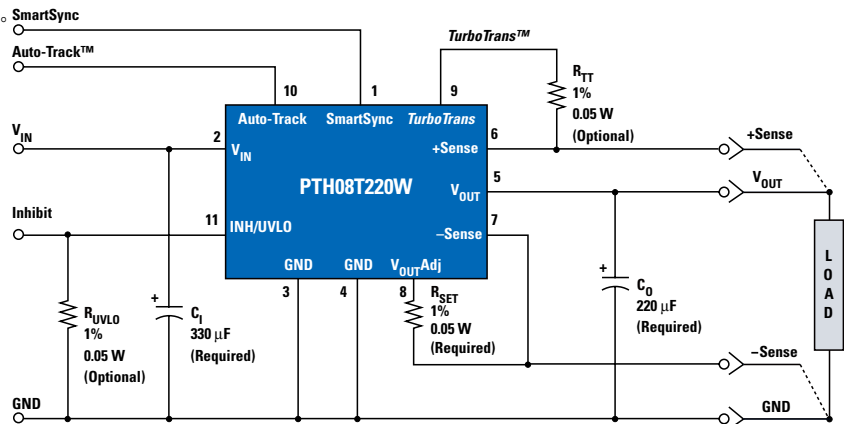
保护—— 错误保护包括了短路、过热、过电流及过电压保护。

封装—— 立式封装(Vertical mounting)实现了最小的占位面积。表面贴装及水平穿孔可用于大多数产品系列。

16A、4.5V至14V输入、并采用TurboTrans™ 技术的负载点(POL)模块 PTH08T220W

敬请访问 www.ti.com/sc/device/PTH08T220W，以获取样片、数据表及应用报告。

PTH08T220W是高性能、16A额定、T2负载点功率模块，其工作输入电压从4.5V至14V。PTH08T220W需要一个单独的电阻以设定输出电压（输出值为覆盖范围从0.7 V至5.5V中的任意值）。PTH08T220W采用了TurboTrans技术、智能同步以及自动跟随电源顺序(Auto-Track™ sequencing)技术。



嵌入式电源模块 (POLA™ 及其它) 产品系列

V_{IN}	1 A	2 A	3 A	5 A	8 A	15 A	20 A	30 A	60 A
48 V	PT4210 PT4310	PTMA PTB48540	PTMA PTB48540	PT4120 PTB48500 PTEA	PTB48560	PTB48501 PTB48502	PTB48520	PTQA PTQB	
24 V	DCP01/02 DCR01/02 DCV01 PTN78000	PT4240 PTN78060	PT4240 PTN78060	PT4140 PTN78020	PTB78560	PTB78520	PTB78520		
12 V	DCP02 DCR01/02 DCV01 PTN78000	PTN78060 PTH08000 PTH08080	PTH08T260 PTN78060	PTH08T230 PTN78020	PTH08T230 PTH12000 PTH12050 PTV12010 PTR08060	PTH08T240 PTH12060 PTH12010 PTR08100	PTH08T220 PTH12020 PTV12020	PTH08T210 PTH12030	PTH08T250 PTV08T250 PTV08040 PTH12040
5 V	DCH0105 DCP01/02 DCR01 DCV01 PTN04050	PTH04000 PTH04070	PTH04T260 PTH04000 PTH04070	PTH04T230 PTH05000	PTH04T230 PTH05050 PTV05010 PTR08060 PT6910 ♣	PTH04T240 PTH05060 PTH05010 PTR08100	PTH04T220 PTH05020 PTV05020	PTH05T210 PTH05030	PTH08T250 PTH04040
3.3 V		PTH04000 PTH04070	PTH04T260 PTH04000 PTH04070	PTH04T230 PTH03000 PT6910 ♣	PTH04T230 PTH03050 PTV03010 PT6910 ♣	PTH04T240 PTH03060 PTH03010	PTH04T220 PTH03020 PTV03020	PTH03030	PTH04040

♣ 特定功能：负相输出



PTH 四倍数据率(QDR)/两倍数据率(DDR)系列电源模块

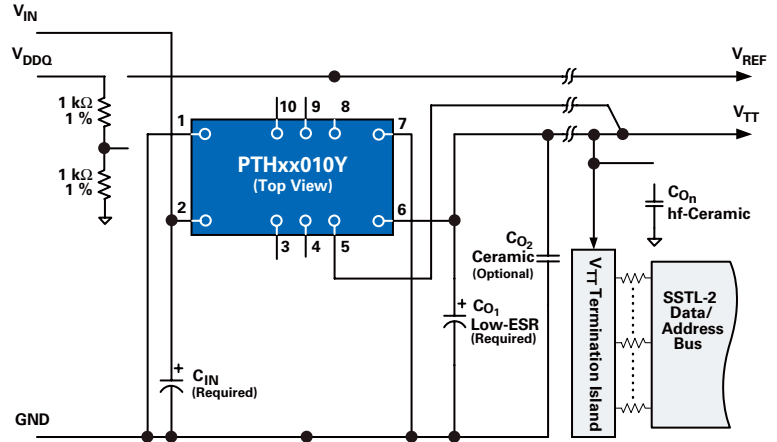
PTHxx060Y

敬请访问www.ti.com/sc/device/PARTnumber，以获取样片、数据表及应用报告。

(PARTnumber 请用 PTH03060Y、PTH05060Y 或 PTH12060Y 替换)

主要特点

- 非隔离DC/DC 模块，用于两倍数据率(DDR)及四倍速据率(QDR)的一至两个内存总线终端
- 所产生的终端电压(V_{TT})通过馈送或吸收电流实现对外部参考电压(V_{REF})的追踪
- V_{TT} 对 V_{DDQ} 电压的追踪具有 ± 40 mV的瞬变状态容忍度
- V_{TT} 支持范围：0.55V至1.8V
- 3.3V、5V及12V输入模式
- 输出电流可达15 A
- POLA™兼容



标准应用

选择指南

Device ¹	Input Bus Voltage	Description	P _{OUT} or I _{OUT}	V _O Range (V)	V _O Adjustable	Auto-Track™ Sequencing	POLA™	DDR-QDR	Price*
Non-Isolated Single Positive Output									
PTH03000W	3.3 V	3.3-V Input 6-A POL	6 A	0.8 to 2.5	✓				6.90
PTH03010W	3.3 V	3.3-V Input 15-A POL with Auto-Track Sequencing	15 A	0.8 to 2.5	✓	✓	✓		11.60
PTH03020W	3.3 V	3.3-V Input 22-A POL with Auto-Track Sequencing	22 A	0.8 to 2.5	✓	✓	✓		18.15
PTH03030W	3.3 V	3.3-V Input 30-A POL with Auto-Track Sequencing	30 A	0.8 to 2.5	✓	✓	✓		25.00
PTH03050W	3.3 V	3.3-V Input 6-A POL with Auto-Track Sequencing	6 A	0.8 to 2.5	✓	✓	✓		6.90
PTH03060W	3.3 V	3.3-V Input 10-A POL with Auto-Track Sequencing	10 A	0.7 to 2.5	✓	✓	✓		9.80
PTH04000W	3.3 V/5 V	3-V to 5.5-V Input 3-A POL with Auto-Track Sequencing	3 A	0.9 to 3.6	✓	✓	✓		4.50
PTH04070W	3.3 V/5 V	3-V to 5.5-V Input 3-A POL	3 A	0.9 to 3.6	✓				4.28
PTH04040W	3.3 V/5 V	3-V to 5.5-V Input 60-A POL with Auto-Track Sequencing	60 A	0.8 to 3.6	✓	✓	✓		35.00
PTH04T220/221W	3.3 V/5 V	2.2- to 5.5-V Input, 16-A T2 2nd Gen PTH POL with TurboTrans™	16 A	0.7 to 3.6	✓	✓	✓		12.60
PTH04T230/231W	3.3 V/5 V	2.2- to 5.5-V Input, 6-A T2 2nd Gen PTH POL with TurboTrans	6 A	0.7 to 3.6	✓	✓			7.90
PTH04T240/241W	3.3 V/5 V	2.2- to 5.5-V Input, 10-A T2 2nd Gen PTH POL with TurboTrans	10 A	0.7 to 3.6	✓	✓			10.80
PTH04T260/261W	3.3 V/5 V	2.2- to 5.5-V Input, 6-A T2 2nd Gen PTH POL with TurboTrans	3 A	0.7 to 3.6	✓	✓			6.25
PTH05000W	5 V	5-V Input 6-A POL	6 A	0.8 to 3.6	✓				6.90
PTH05010W	5 V	5-V Input 15-A POL with Auto-Track Sequencing	15 A	0.8 to 3.6	✓	✓	✓		11.60
PTH05020W	5 V	5-V Input 22-A POL with Auto-Track Sequencing	22 A	0.8 to 3.6	✓	✓	✓		18.15
PTH05030W	5 V	5-V Input 30-A POL with Auto-Track Sequencing	30 A	0.8 to 3.6	✓	✓	✓		25.00
PTH05050W	5 V	5-V Input 6-A POL with Auto-Track Sequencing	6 A	0.8 to 3.6	✓	✓	✓		6.90
PTH05060W	5 V	5-V Input 10-A POL with Auto-Track Sequencing	10 A	0.8 to 3.6	✓	✓	✓		9.80
PTH05T210W	5 V	5-V Input, 30-A T2 2nd Gen PTH POL with TurboTrans	30 A	0.7 to 3.6	✓	✓	✓		18.00
PTH08000W	5 V/12 V	4.5-V to 18-V Input, 2.25-A POL with Auto-Track Sequencing	2.25 A	0.9 to 5.5	✓	✓	✓		4.50
PTH08080W	5 V/12 V	4.5-V to 18-V Input, 2.25-A POL	2.25 A	0.9 to 5.5	✓				4.28
PTH08T210W	12 V	5.5- to 14-V Input, 30-A T2 2nd Gen PTH POL with TurboTrans	30 A	0.7 to 3.6	✓	✓	✓		18.00
PTH08T220/221W	5 V/12 V	4.5- to 14-V Input, 16-A T2 2nd Gen PTH POL with TurboTrans	16 A	0.7 to 5.5	✓	✓	✓		12.60
PTH08T230/231W	5 V/12 V	4.5- to 14-V Input, 6-A T2 2nd Gen PTH POL with TurboTrans	6 A	0.7 to 5.5	✓	✓			7.90
PTH08T240/241W	5 V/12 V	4.5- to 14-V Input, 10-A T2 2nd Gen PTH POL with TurboTrans	10 A	0.7 to 5.5	✓	✓			10.80
PTH08T240F	5 V/12 V	4.5- to 14-V Input, 10-A T2 2nd Gen PTH POL for 3-GHz DSP Systems	10 A	0.7 to 2.0	✓	✓			10.80
PTH08T250W	5 V/12 V	4.5- to 14-V Input, 50-A T2 2nd Gen PTH POL with TurboTrans	50 A	0.7 to 3.6	✓	✓	✓		36.00
PTH08T260/261W	5 V/12 V	4.5- to 14-V Input, 3-A T2 2nd Gen PTH POL with TurboTrans	3 A	0.7 to 5.5	✓	✓			6.25
PTH12000L/W	12 V	12-V Input 6-A POL	6 A	0.8 to 1.8/1.2 to 5.5	✓				6.90
PTH12010L/W	12 V	12-V Input 12-A POL with Auto-Track Sequencing	12 A	0.8 to 1.8/1.2 to 5.5	✓	✓	✓		11.60

¹敬请访问www.ti.com.cn/power，以获取完全的供货信息。

* 建议零售价为每1000片批量的美元价格。



选择指南 (续)

Device ¹	Input Bus Voltage	Description	P _{OUT} or I _{OUT}	V _O Range (V)	V _O Adjustable	Auto-Track™ Sequencing	POLA™	DDR-QDR	Price*
Non-Isolated Single Positive Output (Continued)									
PTH12020L/W	12 V	12-V Input 18-A POL with Auto-Track Sequencing	18 A	0.8 to 1.8/1.2 to 5.5	✓	✓	✓		18.15
PTH12030L/W	12 V	12-V Input 26-A POL with Auto-Track Sequencing	26 A	0.8 to 1.8/1.2 to 5.5	✓	✓	✓		25.00
PTH12040W	12 V	12-V Input 50-A POL with Auto-Track Sequencing	50 A	0.8 to 5.5	✓	✓	✓		35.00
PTH12050L/W	12 V	12-V Input 6-A POL with Auto-Track Sequencing	6 A	0.8 to 1.8/1.2 to 5.5	✓	✓	✓		6.90
PTH12060L/W	12 V	12-V Input 10-A POL with Auto-Track Sequencing	10 A	0.8 to 1.8/1.2 to 5.5	✓	✓	✓		9.80
PTH03010Y	3.3 V	3.3-V Input 15-A DDR Terminating Module	15 A	Follows V _{REF}	✓		✓	✓	11.60
PTH03050Y	3.3 V	3.3-V Input 6-A DDR Terminating Module	6 A	Follows V _{REF}	✓		✓	✓	6.90
PTH03060Y	3.3 V	3.3-V Input 10-A DDR Terminating Module	10 A	Follows V _{REF}	✓		✓	✓	9.80
PTH05010Y	5 V	5-V Input 15-A DDR Terminating Module	15 A	Follows V _{REF}	✓		✓	✓	11.60
PTH05050Y	5 V	5-V Input 6-A DDR Terminating Module	6 A	Follows V _{REF}	✓		✓	✓	6.90
PTH05060Y	5 V	5-V Input 10-A DDR Terminating Module	10 A	Follows V _{REF}	✓		✓	✓	9.80
PTH12010Y	12 V	12-V Input 12-A DDR Terminating Module	12 A	Follows V _{REF}	✓		✓	✓	11.60
PTH12050Y	12 V	12-V Input 6-A DDR Terminating Module	6 A	Follows V _{REF}	✓		✓	✓	6.90
PTH12060Y	12 V	12-V Input 8-A DDR Terminating Module	8 A	Follows V _{REF}	✓		✓	✓	9.80
PTN04050C	3.3 V/5 V	3-V/5-V Input, 12-W Output Step-Up (Boost) ISR	12 W	5 to 15	✓				8.00
PTN78000W/H	V _O + 2 to 36 V	Wide-Input, Wide-Output 1.5-A Positive Step-Down ISR	1.5 A	2.5 to 12/12 to 22	✓				8.00
PTN78060W/H	V _O + 2 to 36 V	Wide-Input, Wide-Output 3-A Positive Step-Down ISR	3 A	2.5 to 12/12 to 22	✓				11.00
PTN78020W/H	V _O + 2 to 36 V	Wide-Input, Wide-Output 6-A Positive Step-Down ISR	6 A	2.5 to 12/12 to 22	✓				15.00
PTR08060W	5 V/12 V	4.5- to 14-V Input, 6-A POL	6 A	0.6 to 5.5	✓				6.00
PTR08100W	5 V/12 V	4.5- to 14-V Input, 10-A POL	10 A	0.6 to 5.5	✓				8.00
PTV03010W	3.3 V	5-V Input 8-A Vertical SIP with Auto-Track Sequencing	8 A	0.8 to 2.5	✓	✓	✓		6.90
PTV03020W	3.3 V	5-V Input 18-A Vertical SIP with Auto-Track Sequencing	18 A	0.8 to 2.5	✓	✓	✓		11.60
PTV05010W	5 V	5-V Input 8-A Vertical SIP with Auto-Track Sequencing	8 A	0.8 to 3.6	✓	✓	✓		6.90
PTV05020W	5 V	5-V Input 18-A Vertical SIP with Auto-Track Sequencing	18 A	0.8 to 3.6	✓	✓	✓		11.60
PTV08T250W	12 V	8-V to 14-V Input, 50-A T2 2nd Gen PTH POL with TurboTrans™	50 A	0.8 to 3.6	✓	✓			36.00
PTV12010L/W	12 V	12-V Input 8-A Vertical SIP with Auto-Track Sequencing	8 A	0.8 to 1.8/1.2 to 5.5	✓	✓	✓		6.90
PTV12020L/W	12 V	12-V Input 18-A Vertical SIP with Auto-Track Sequencing	16 A	0.8 to 1.8/1.2 to 5.5	✓	✓	✓		11.60
Non-Isolated Single Negative Output									
PT6910	3.3 V/5 V	3.3-V/5-V Input 12-W Adjustable Plus to Minus Voltage Converter	12 W	-1.2 to -6.5	✓				26.25
PTN04050A	3.3 V/5 V	3-V to 5-V Input, 6-W Positive to Negative (Buck-Boost) ISR	6 W	-3.3 to -15	✓				8.00
PTN78000A	7 to 29 V	Wide-Input, Wide-Output 1.5-A Positive to Negative (Buck-Boost) ISR	1.5 A	-3 to -15	✓				8.00
PTN78060A	9 to 29 V	Wide-Input, Wide-Output 15-W Positive to Negative (Buck-Boost) ISR	15 W	-3 to -15	✓				11.00
PTN78020A	9 to 29 V	Wide-Input, Wide-Output 25-W Positive to Negative (Buck-Boost) ISR	25 W	-3 to -15	✓				15.00
Isolated Single Output									
DCH01_S	5	1-W Unregulated Isolated DC/DC Converter	1 W	5, 12, 15					4.25
DCP01_B	5, 24	1-W Unregulated Isolated DC/DC Converter with Synchronization	1 W	5, 12, 15					5.35
DCP02	5, 12, 24	2-W Unregulated Isolated DC/DC Converter with Synchronization	2 W	3.3, 5, 7, 9, 12, 15					6.95
DCR01	5, 12, 24	1-W Regulated Isolated DC/DC Converter with Synchronization	1 W	3.3, 5					5.95
PT4210	48 V	3- to 7-W 48-V Input Isolated DC/DC Converter	3 to 7 W	3.3 to 12					18.75
PTB48520W	48 V	25-A 48-V Input Isolated POL Converter with Auto-Track I/O	75 W	1.8 to 3.6	✓	✓			62.00
PTB48540A/B/C	48 V	10-W 48-V Input Isolated PoE Module	10 W	3.3, 5, 12	✓				26.00
PTB48560A/B/C	48 V	30-W 48-V Input Isolated POL Converter with Auto-Track I/O	30 W	3.3, 5, 12	✓	✓			25.00
PTB78520W	18 V to 60 V	20-A 18-V to 60-V Input Isolated POL Converter with Track I/O	65 W	1.8 to 3.6	✓	✓			62.00
PTB78560A/B/C	18 V to 60 V	30-W 18-V to 60-V Input Isolated POL Converter with Track I/O	30 W	3.3, 5, 12	✓	✓			25.00
PTEA4	48 V	50-W 48-V Input Isolated DC/DC Converter — Industry Std Footprint	50 W	2.5, 3.3, 12	✓				26.50
PTMA4	48 V	10-W 48-V Input Isolated DC/DC Converter — Industry Std Footprint	10 W	3.3, 5, 12	✓				20.00
PTQA4	48 V	100-W 48-V Input Isolated DC/DC Converter — Industry Std Footprint	100 W	2.5, 3.3, 5	✓				44.00
PTQB4	48 V	200-W 36- to 75-V Input Isolated Bus Converter with Auto-Track Control	200 W	8		✓			45.00
Isolated Multiple Output									
DCH01_D	5	1-W Unregulated Isolated DC/DC Converter	1 W	±5, ±12, ±15					4.25
DCP01_DB	5, 15, 24	1-W Unregulated Dual Isolated DC/DC Converter with Synchronization	1 W	±5, ±12, ±15					5.90
DCP02_D	5, 12, 24	2-W Unregulated Dual Isolated DC/DC Converter with Synchronization	2 W	±5, ±12, ±15					6.95
PTB48500A	48 V	30-W 48-V Input Isolated Dual DC/DC Converter	30 W	3.3/1.2	✓				43.00
PTB48501A/B	48 V	35-W 48-V Input Isolated Dual DC/DC Converter	35 W	3.3/1.2 or 1.5	✓				45.00
PTB48502A/B	48 V	40-W 48-V Input Isolated Dual DC/DC Converter	40 W	3.3/1.2 or 1.5	✓				49.00

¹敬请访问www.ti.com.cn/power，以获取完全的供货信息。

* 建议零售价为每1000片批量的美元价格。

TI 提供了极宽范围的 LDO 产品组合，所覆盖的应用从微安培保持电路直至 7.5A 电信负载。如需作更为全面的选择，请参阅 28-29 页或访问 www.ti.com.cn/power 以获取完全的产品组合信息。

设计因素

输入电压—— 最小输入电压 V_{IN} 必须大于输出电压 V_{OUT} 与压降 V_{DO} 之和，且不受列表中所给出的最小值的约束。

效率—— 如忽略 LDO 的静态工作点电流 (I_q) 损耗，功效可用 V_{OUT}/V_{IN} 计算。

功率损耗—— $P_D = (V_{IN} - V_{OUT}) \times I_{OUT}$ ； P_D 受封装模式、 T_A 及 T_{JMAX} 所限。敬请参照应用文档 SLVA118——《Digital Designer's Guide to Linear Voltage Regulators and Thermal Management》以获得相关支持。如需更高的功耗或需求更高的功效，TI 推荐步降式（降压）DC/DC 转换器/控制器（敬请参阅 30-38 页以选择产品）。

电容要求—— 输出电容，特别是其等效串联阻抗 (ESR) 是实现稳定性的关键。因此，部分 LDO 需采用具有高 ESR 的铝输出电容。而如果 LDO 能稳定于无输出电容或使用低 ESR 陶瓷输出电容的状态，那它也通常稳定于使用任意类型的电容状态。

射频、音频及其它对噪声敏感的应用—— 选择具有高功率纹波抑制 (PSRR) 的 LDO 可实现输入电源的噪声消除，并给出较低噪声 ($< 50 \mu V_{rms}$) 的输出。部分 LDO 还具有旁通 (BP) 引脚，用于添加电容以实现更低的输出噪声。

供电良好/电源电压监控 (PG/SVS)—— 诸如微控制器、DSP 及 FPGA 等器件都要求某个下限电压值以确保正常工作。电源电压监控 (SVS) 功能监测系统电压，在压降降至某一确定值的时候给出输出信号，使系统复位并防止出现故障。SVS 在特定的延迟时间之后给出复位信号，而供电良好 (PG) 功能无延迟。

线性及低压降 (LDO) 稳压器



反向泄漏保护—— 在某些特定应用中，LDO 输出电压高于输入电压，而反向泄漏保护的 特色就在于防止 LDO 中的电流从输出端逆向流至输入端，从而避免了对输入电源的损坏，特别是对于电池电源。

特定应用的多输出解决方案—— 敬请参阅第 39-41 页。

带软启动或追踪 (tracking) 功能的大电流低压降稳压器系列

TPS74701

NEW

敬请访问 www.ti.com/sc/device/TPS74701，以获取数据表、评估板及应用报告。

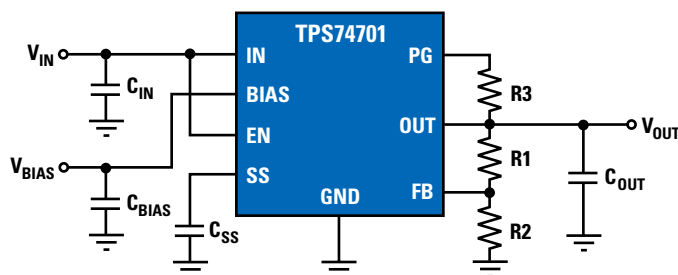
TPS74xxx 系列低压降稳压器为宽范围的多种应用提供了一个易于使用、强健的电源管理解决方案。用户可编程软启动通过降低启动期间的电容性浪涌 (inrush) 电流，使得输入功率源所承受的载荷最小化。软启动是单调 (monotonic) 的，非常适用于为不同类型的处理器及 ASIC 供电。使能 (enable) 输入及供电良好 (power good) 输出借由外部稳压器允许轻松的电源定序。该器件完备的灵活性允许用户自行配置一套解决方案，以满足 FPGA、DSP 对电源次序的需求及其他具有特定启动需求的应用。

主要特点

- 输出电压：0.8V 至 3.3V 可调节
- 超低压降：50mV 至 120mV
- 软启动或追踪
- 全负载/温度/线路范围内，精度误差仅为 1% 或 2%
- 2.2 μF ，或无须输出电容
- 封装模式：小外形 3 x 3/5 x 5 QFN 封装或 7 引脚 DPAK 封装
- V_{BIAS} 电压可支持效率大于 80%

应用

- DSP/FPGA 电源
- 后向稳压 (Post regulation)
- 医疗设备



TPS74701 典型应用

选择指南

Device	Output Current	V_{DO} (mV)	Accuracy (%)	Feature	C_{OUT} (μF)
TPS747xx	500 mA	50	2	Soft Start	2.2
TPS748xx	1.5 A	60	2	Soft Start	2.2
TPS742xx	1.5 A	55	1	Soft Start	—
TPS743xx	1.5 A	55	1	Tracking	—
TPS749xx	3.0 A	120	2	Soft Start	2.2
TPS744xx	3.0 A	115	1	Soft Start	—